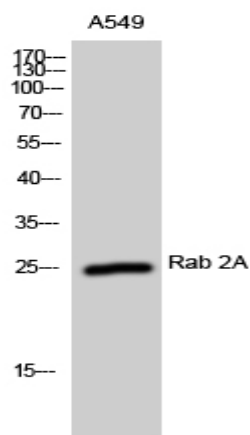


## Rab 2A Polyclonal Antibody

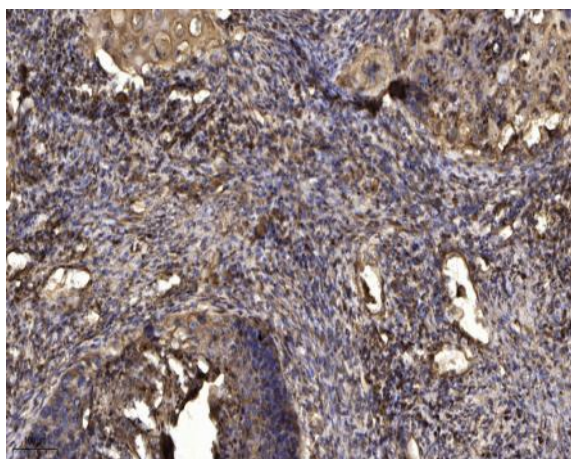
<b>Catalog No :</b>	YT3924
<b>Reactivity :</b>	Human;Mouse;Rat
<b>Applications :</b>	WB;IHC;IF;ELISA
<b>Target :</b>	Rab 2A
<b>Fields :</b>	>>AMPK signaling pathway
<b>Gene Name :</b>	RAB2A
<b>Protein Name :</b>	Ras-related protein Rab-2A
<b>Human Gene Id :</b>	5862
<b>Human Swiss Prot No :</b>	P61019
<b>Mouse Gene Id :</b>	59021
<b>Mouse Swiss Prot No :</b>	P53994
<b>Rat Gene Id :</b>	65158
<b>Rat Swiss Prot No :</b>	P05712
<b>Immunogen :</b>	The antiserum was produced against synthesized peptide derived from human RAB2A. AA range:84-133
<b>Specificity :</b>	Rab 2A Polyclonal Antibody detects endogenous levels of Rab 2A protein.
<b>Formulation :</b>	Liquid in PBS containing 50% glycerol, 0.5% BSA and 0.02% sodium azide.
<b>Source :</b>	Polyclonal, Rabbit,IgG
<b>Dilution :</b>	WB 1:500 - 1:2000. IHC 1:100 - 1:300. ELISA: 1:20000.. IF 1:50-200

<b>Purification :</b>	The antibody was affinity-purified from rabbit antiserum by affinity-chromatography using epitope-specific immunogen.
<b>Concentration :</b>	1 mg/ml
<b>Storage Stability :</b>	-15°C to -25°C/1 year(Do not lower than -25°C)
<b>Observed Band :</b>	25kD
<b>Background :</b>	The protein encoded by this gene belongs to the Rab family, members of which are small molecular weight guanosine triphosphatases (GTPases) that contain highly conserved domains involved in GTP binding and hydrolysis. The Rabs are membrane-bound proteins, involved in vesicular fusion and trafficking. This protein is a resident of pre-Golgi intermediates, and is required for protein transport from the endoplasmic reticulum (ER) to the Golgi complex. Alternatively spliced transcript variants encoding different isoforms have been found for this gene. [provided by RefSeq, Oct 2011],
<b>Function :</b>	function:Required for protein transport from the endoplasmic reticulum to the Golgi complex.,similarity:Belongs to the small GTPase superfamily. Rab family.,subcellular location:Identified by mass spectrometry in melanosome fractions from stage I to stage IV.,subunit:Interacts with PRKCI.,
<b>Subcellular Location :</b>	Endoplasmic reticulum-Golgi intermediate compartment membrane ; Lipid-anchor . Melanosome . Endoplasmic reticulum membrane ; Lipid-anchor . Golgi apparatus membrane ; Lipid-anchor . Cytoplasmic vesicle, secretory vesicle, acrosome . Localized in the Golgi apparatus in the round spermatids and in the acrosome in the elongating spermatid (By similarity). Identified by mass spectrometry in melanosome fractions from stage I to stage IV (PubMed:17081065). .
<b>Expression :</b>	Brain,Skin,
<b>Sort :</b>	13219
<b>No4 :</b>	1

## Products Images



Western Blot analysis of A549 cells using Rab 2A Polyclonal Antibody



Immunohistochemical analysis of paraffin-embedded human Squamous cell carcinoma of lung. 1, Antibody was diluted at 1:200(4° overnight). 2, Tris-EDTA,pH9.0 was used for antigen retrieval. 3,Secondary antibody was diluted at 1:200(room temperature, 45min).