

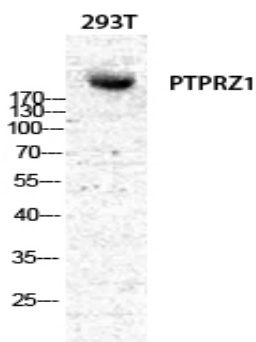
PTPζ Polyclonal Antibody

Catalog No :	YT3903
Reactivity :	Human;Mouse;Rat
Applications :	WB;ELISA;IHC
Target :	PTPζ
Fields :	>>Epithelial cell signaling in Helicobacter pylori infection
Gene Name :	PTPRZ1
Protein Name :	Receptor-type tyrosine-protein phosphatase zeta
Human Gene Id :	5803
Human Swiss Prot No :	P23471
Rat Gene Id :	25613
Rat Swiss Prot No :	Q62656
Immunogen :	The antiserum was produced against synthesized peptide derived from human PTPRZ1. AA range:122-171
Specificity :	PTPζ Polyclonal Antibody detects endogenous levels of PTPζ protein.
Formulation :	Liquid in PBS containing 50% glycerol, 0.5% BSA and 0.02% sodium azide.
Source :	Polyclonal, Rabbit,IgG
Dilution :	WB 1:500-2000;IHC 1:50-300; ELISA 2000-20000
Purification :	The antibody was affinity-purified from rabbit antiserum by affinity-chromatography using epitope-specific immunogen.
Concentration :	1 mg/ml

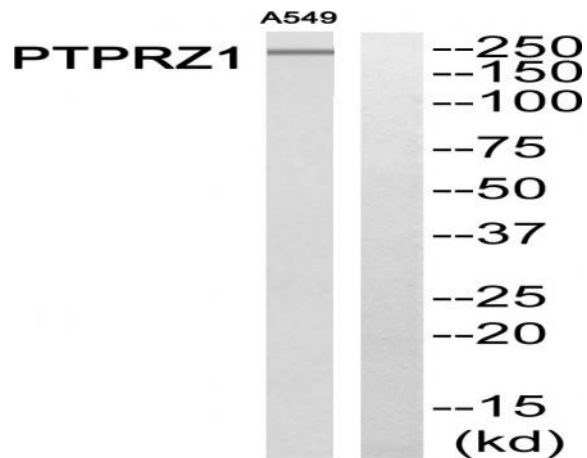
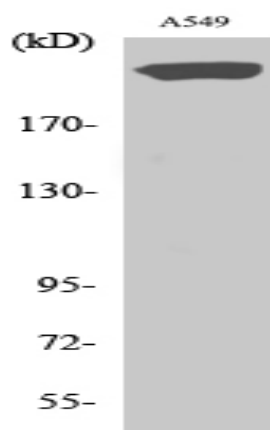
Storage Stability :	-15 °C to -25 °C/1 year(Do not lower than -25 °C)
Observed Band :	250kD
Cell Pathway :	Epithelial cell signaling in Helicobacter pylori infection;
Background :	This gene encodes a member of the receptor protein tyrosine phosphatase family. Expression of this gene is restricted to the central nervous system (CNS), and it may be involved in the regulation of specific developmental processes in the CNS. Alternatively spliced transcript variants encoding different isoforms have been described for this gene. [provided by RefSeq, May 2011],
Function :	catalytic activity:Protein tyrosine phosphate + H(2)O = protein tyrosine + phosphate.,caution:PubMed:8387522 and PubMed:2170109 have termed this protein RPTPase beta.,function:May be involved in the regulation of specific developmental processes in the CNS.,sequence caution:Contaminating sequence. The N-terminus may be contaminated with vector sequence.,similarity:Belongs to the protein-tyrosine phosphatase family. Receptor class 5 subfamily.,similarity:Contains 1 alpha-carbonic anhydrase domain.,similarity:Contains 1 fibronectin type-III domain.,similarity:Contains 2 tyrosine-protein phosphatase domains.,subunit:The carbonic-anhydrase like domain binds to contactin.,tissue specificity:Specifically expressed in the central nervous system, where it is localized in the Purkinje cell layer of the cerebellum, the dentate gyrus, and the subependymal layer of the anterior horn of the lateral v
Subcellular Location :	[Isoform 1]: Cell membrane; Single-pass type I membrane protein. Secreted . A secreted form is apparently generated by shedding of the extracellular domain. .; [Isoform 2]: Secreted .
Expression :	Specifically expressed in the central nervous system, where it is localized in the Purkinje cell layer of the cerebellum, the dentate gyrus, and the subependymal layer of the anterior horn of the lateral ventricle. Developmentally regulated in the brain.
Sort :	13164
No4 :	1

Products Images

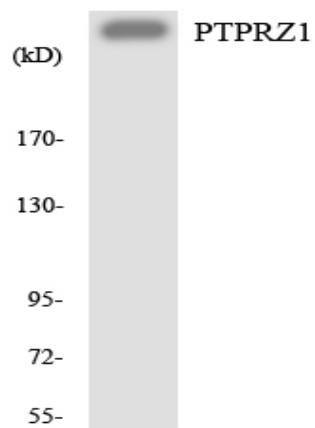
Western Blot analysis of various cells using PTP ζ Polyclonal Antibody diluted at 1:500



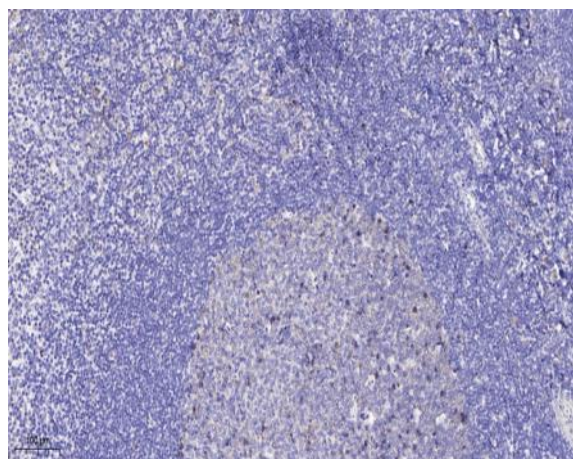
Western Blot analysis of A549 cells using PTP ζ Polyclonal Antibody diluted at 1:500



Western blot analysis of PTPRZ1 Antibody. The lane on the right is blocked with the PTPRZ1 peptide.



Western blot analysis of the lysates from HeLa cells using PTPRZ1 antibody.



Immunohistochemical analysis of paraffin-embedded human tonsil. 1, Antibody was diluted at 1:200(4° overnight). 2, Tris-EDTA,pH9.0 was used for antigen retrieval. 3,Secondary antibody was diluted at 1:200(room temperature, 45min).