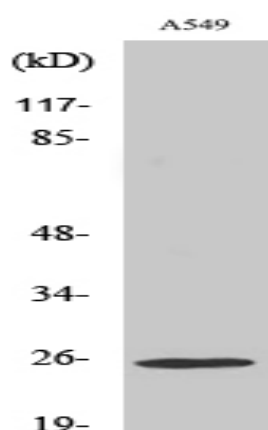


Rho GDIγ Polyclonal Antibody

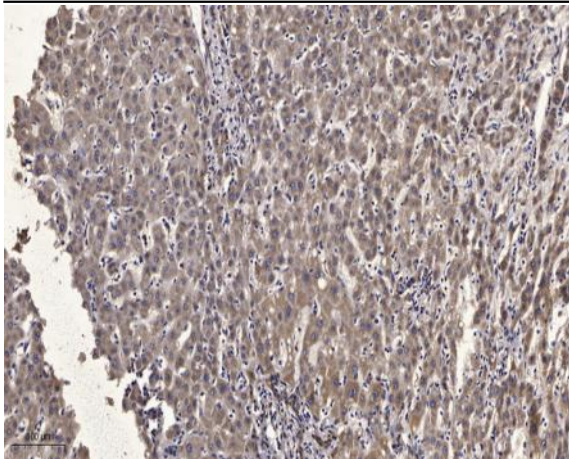
Catalog No :	YT4082
Reactivity :	Human;Rat;Mouse;
Applications :	WB;ELISA;IHC
Target :	Rho GDIγ
Fields :	>>Neurotrophin signaling pathway;>>Vasopressin-regulated water reabsorption
Gene Name :	ARHGDIG
Protein Name :	Rho GDP-dissociation inhibitor 3
Human Gene Id :	398
Human Swiss Prot No :	Q99819
Mouse Swiss Prot No :	Q62160
Immunogen :	Synthesized peptide derived from Rho GDIγ . at AA range: 110-190
Specificity :	Rho GDIγ Polyclonal Antibody detects endogenous levels of Rho GDIγ protein.
Formulation :	Liquid in PBS containing 50% glycerol, 0.5% BSA and 0.02% sodium azide.
Source :	Polyclonal, Rabbit,IgG
Dilution :	WB 1:500-2000;IHC 1:50-300; ELISA 2000-20000
Purification :	The antibody was affinity-purified from rabbit antiserum by affinity-chromatography using epitope-specific immunogen.
Concentration :	1 mg/ml
Storage Stability :	-15°C to -25°C/1 year(Do not lower than -25°C)

Observed Band :	25kD
Background :	The GDP-dissociation inhibitors (GDIs) play a primary role in modulating the activation of GTPases by inhibiting the exchange of GDP for GTP. See ARHGDIB (MIM 602843).[supplied by OMIM, Nov 2010],
Function :	function:Inhibits GDP/GTP exchange reaction of RhoB. Interacts specifically with the GDP- and GTP-bound forms of post-translationally processed Rhob and Rhog proteins, both of which show a growth-regulated expression in mammalian cells. Stimulates the release of the GDP-bound but not the GTP-bound RhoB protein. Also inhibits the GDP/GTP exchange of RhoB but shows less ability to inhibit the dissociation of prebound GTP.,similarity:Belongs to the Rho GDI family.,tissue specificity:Primarily expressed in pancreas and brain.,
Subcellular Location :	Cytoplasm.
Expression :	Primarily expressed in pancreas and brain.
Sort :	14448
No4 :	1
Host :	Rabbit
Modifications :	Unmodified

Products Images



Western Blot analysis of various cells using Rho GDIγ Polyclonal Antibody



Immunohistochemical analysis of paraffin-embedded human liver cancer. 1, Antibody was diluted at 1:200(4° overnight). 2, Tris-EDTA,pH9.0 was used for antigen retrieval. 3,Secondary antibody was diluted at 1:200(room temperature, 45min).