

Rho B Polyclonal Antibody

Catalog No :	YT4078
Reactivity :	Human;Mouse;Rat
Applications :	WB;ELISA;IHC
Target :	Rho B
Fields :	>>Salmonella infection
Gene Name :	RHOB
Protein Name :	Rho-related GTP-binding protein RhoB
Human Gene Id :	388
Human Swiss Prot No :	P62745
Mouse Gene Id :	11852
Mouse Swiss Prot No :	P62746
Rat Gene Id :	64373
Rat Swiss Prot No :	P62747
Immunogen :	The antiserum was produced against synthesized peptide derived from human RHOB. AA range:99-148
Specificity :	Rho B Polyclonal Antibody detects endogenous levels of Rho B protein.
Formulation :	Liquid in PBS containing 50% glycerol, 0.5% BSA and 0.02% sodium azide.
Source :	Polyclonal, Rabbit,IgG
Dilution :	WB 1:500-2000;IHC 1:50-300; ELISA 2000-20000

Purification :	The antibody was affinity-purified from rabbit antiserum by affinity-chromatography using epitope-specific immunogen.
Concentration :	1 mg/ml
Storage Stability :	-15°C to -25°C/1 year(Do not lower than -25°C)
Observed Band :	22kD
Background :	<p>function:Mediates apoptosis in neoplastically transformed cells after DNA damage. Not essential for development but affects cell adhesion and growth factor signaling in transformed cells. Plays a negative role in tumorigenesis as deletion causes tumor formation. Involved in intracellular protein trafficking of a number of proteins. Targets PKN1 to endosomes and is involved in trafficking of the EGF receptor from late endosomes to lysosomes. Also required for stability and nuclear trafficking of AKT1/AKT which promotes endothelial cell survival during vascular development.,miscellaneous:RHOB is one of the targets of farnesyltransferase inhibitors which are currently under investigation as cancer therapeutics. These elevate the levels of geranylgeranylated RHOB and cause mislocalization, leading to apoptosis and antineoplastic effects.,PTM:Prenylation specifies the subcellular location of RHOB. The farnesylated form is localized to the plasma membrane while the geranylgeranylated form is localized to the endosome.,similarity:Belongs to the small GTPase superfamily. Rho family.,subcellular location:Late endosomal membrane (geranylgeranylated form). Plasma membrane (farnesylated form). Also detected at the nuclear margin and in the nucleus.,subunit:Binds ROCK1 and ROCK2. Also binds PKN1/PRK1. Interacts with ARGGEF3, RTKN and AKAP13.,</p>
Function :	<p>function:Mediates apoptosis in neoplastically transformed cells after DNA damage. Not essential for development but affects cell adhesion and growth factor signaling in transformed cells. Plays a negative role in tumorigenesis as deletion causes tumor formation. Involved in intracellular protein trafficking of a number of proteins. Targets PKN1 to endosomes and is involved in trafficking of the EGF receptor from late endosomes to lysosomes. Also required for stability and nuclear trafficking of AKT1/AKT which promotes endothelial cell survival during vascular development.,miscellaneous:RHOB is one of the targets of farnesyltransferase inhibitors which are currently under investigation as cancer therapeutics. These elevate the levels of geranylgeranylated RHOB and cause mislocalization, leading to apoptosis and antineoplastic effects.,PTM:Prenylation specifies the subcellular location of</p>
Subcellular Location :	<p>Late endosome membrane; Lipid-anchor. Cell membrane; Lipid-anchor. Nucleus. Cleavage furrow. Late endosomal membrane (geranylgeranylated form). Plasma membrane (farnesylated form). Also detected at the nuclear margin and in the nucleus. Translocates to the equatorial region before furrow formation in a ECT2-dependent manner.</p>
Expression :	Aorta,Brain,Fetal brain cortex,Hippocampus,

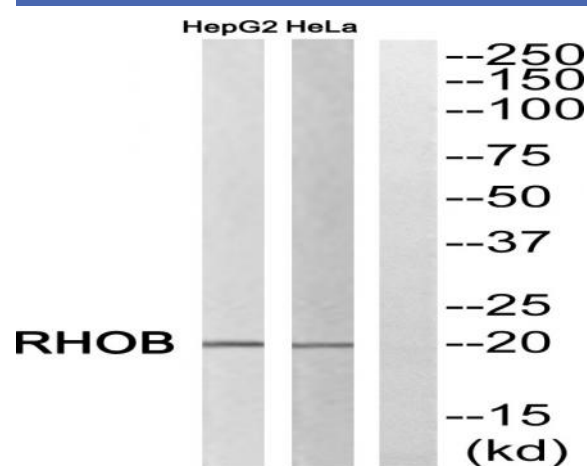
Sort : 14443

No4 : 1

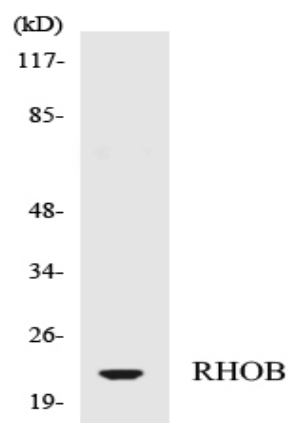
Host : Rabbit

Modifications : Unmodified

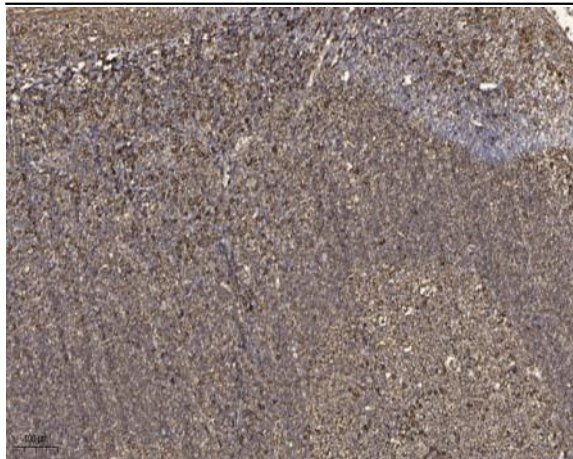
Products Images



Western blot analysis of RHOB Antibody. The lane on the right is blocked with the RHOB peptide.



Western blot analysis of the lysates from HepG2 cells using RHOB antibody.



Immunohistochemical analysis of paraffin-embedded human tonsil. 1, Antibody was diluted at 1:200(4 ° overnight). 2, Tris-EDTA,pH9.0 was used for antigen retrieval. 3,Secondary antibody was diluted at 1:200(room temperature, 45min).