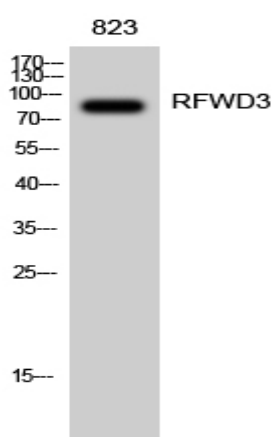


## RFWD3 Polyclonal Antibody

<b>Catalog No :</b>	YT4064
<b>Reactivity :</b>	Human;Rat;Mouse;
<b>Applications :</b>	WB;IHC;IF;ELISA
<b>Target :</b>	RFWD3
<b>Gene Name :</b>	RFWD3
<b>Protein Name :</b>	E3 ubiquitin-protein ligase RFWD3
<b>Human Gene Id :</b>	55159
<b>Human Swiss Prot No :</b>	Q6PCD5
<b>Mouse Swiss Prot No :</b>	Q8CIK8
<b>Immunogen :</b>	The antiserum was produced against synthesized peptide derived from human RFWD3. AA range:374-423
<b>Specificity :</b>	RFWD3 Polyclonal Antibody detects endogenous levels of RFWD3 protein.
<b>Formulation :</b>	Liquid in PBS containing 50% glycerol, 0.5% BSA and 0.02% sodium azide.
<b>Source :</b>	Polyclonal, Rabbit,IgG
<b>Dilution :</b>	WB 1:500 - 1:2000. IHC 1:100 - 1:300. ELISA: 1:40000.. IF 1:50-200
<b>Purification :</b>	The antibody was affinity-purified from rabbit antiserum by affinity-chromatography using epitope-specific immunogen.
<b>Concentration :</b>	1 mg/ml
<b>Storage Stability :</b>	-15°C to -25°C/1 year(Do not lower than -25°C)
<b>Observed Band :</b>	85kD

<b>Background :</b>	PTM:Phosphorylated upon DNA damage, probably by ATM or ATR.,similarity:Contains 1 RING-type zinc finger.,similarity:Contains 3 WD repeats.,
<b>Function :</b>	PTM:Phosphorylated upon DNA damage, probably by ATM or ATR.,similarity:Contains 1 RING-type zinc finger.,similarity:Contains 3 WD repeats.,
<b>Subcellular Location :</b>	Nucleus . Nucleus, PML body . Cytoplasm . In undamaged cells, found both in the cytoplasm and in the nucleus, partially associated with PML nuclear bodies (PubMed:21558276). In response to replication block, such as that caused by hydroxyurea treatment, or to DNA damage caused by ionizing radiations or doxorubicin, recruited to the nucleus, to stalled replication forks or to sites of DNA repair (PubMed:21504906, PubMed:28575657). This recruitment depends upon RPA2 (PubMed:21504906). .
<b>Expression :</b>	Brain,Teratocarcinoma,Testis,
<b>Tag :</b>	hot
<b>Sort :</b>	14420
<b>Host :</b>	Rabbit
<b>Modifications :</b>	Unmodified

## Products Images



Western Blot analysis of 823 cells using RFWD3 Polyclonal Antibody diluted at 1:2000

