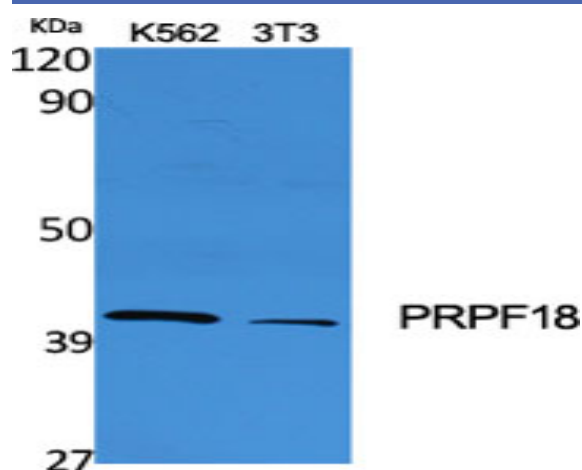


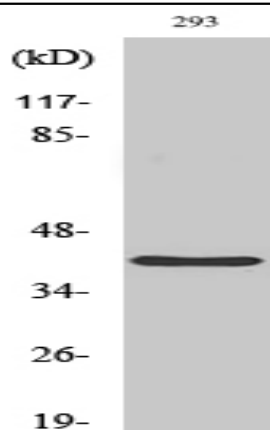
## PRPF18 Polyclonal Antibody

<b>Catalog No :</b>	YT3866
<b>Reactivity :</b>	Human;Mouse;Rat
<b>Applications :</b>	WB;ELISA;IHC
<b>Target :</b>	PRPF18
<b>Fields :</b>	>>Spliceosome
<b>Gene Name :</b>	PRPF18
<b>Protein Name :</b>	Pre-mRNA-splicing factor 18
<b>Human Gene Id :</b>	8559
<b>Human Swiss Prot No :</b>	Q99633
<b>Mouse Gene Id :</b>	67229
<b>Mouse Swiss Prot No :</b>	Q8BM39
<b>Rat Gene Id :</b>	171552
<b>Rat Swiss Prot No :</b>	Q9JKB8
<b>Immunogen :</b>	The antiserum was produced against synthesized peptide derived from human PRPF18. AA range:182-231
<b>Specificity :</b>	PRPF18 Polyclonal Antibody detects endogenous levels of PRPF18 protein.
<b>Formulation :</b>	Liquid in PBS containing 50% glycerol, 0.5% BSA and 0.02% sodium azide.
<b>Source :</b>	Polyclonal, Rabbit,IgG
<b>Dilution :</b>	WB 1:500-2000;IHC 1:50-300; ELISA 2000-20000

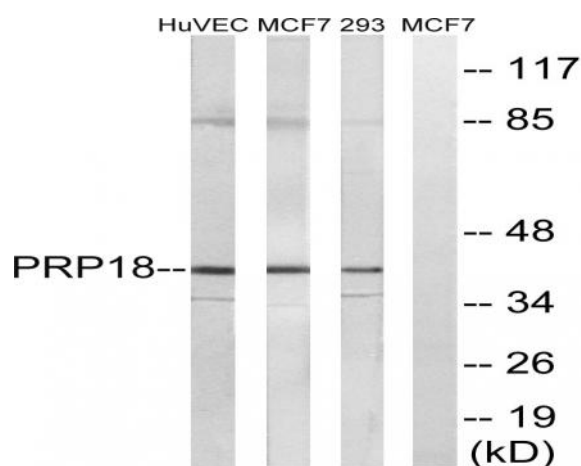
<b>Purification :</b>	The antibody was affinity-purified from rabbit antiserum by affinity-chromatography using epitope-specific immunogen.
<b>Concentration :</b>	1 mg/ml
<b>Storage Stability :</b>	-15°C to -25°C/1 year(Do not lower than -25°C)
<b>Observed Band :</b>	40kD
<b>Cell Pathway :</b>	Spliceosome;
<b>Background :</b>	Pre-mRNA splicing occurs in 2 sequential transesterification steps. The protein encoded by this gene is found to be essential for the catalytic step II in pre-mRNA splicing process. It is found in the spliceosome, and contains seven WD repeats, which function in protein-protein interactions. This protein has a sequence similarity to the yeast splicing factor Prp18. [provided by RefSeq, Jul 2008],
<b>Function :</b>	function:Participates in the second step of pre-mRNA splicing.,similarity:Belongs to the PRP18 family.,subcellular location:Colocalizes with spliceosomal snRNPs.,subunit:Heterodimer with PPIH. Interacts with PRPF4 and with the spliceosome. Part of a complex containing U4/U6 snRNPs.,
<b>Subcellular Location :</b>	Nucleus speckle . Colocalizes with spliceosomal snRNPs. .
<b>Expression :</b>	Brain,Cervix carcinoma,Placenta,
<b>Sort :</b>	13078
<b>No4 :</b>	1

## Products Images

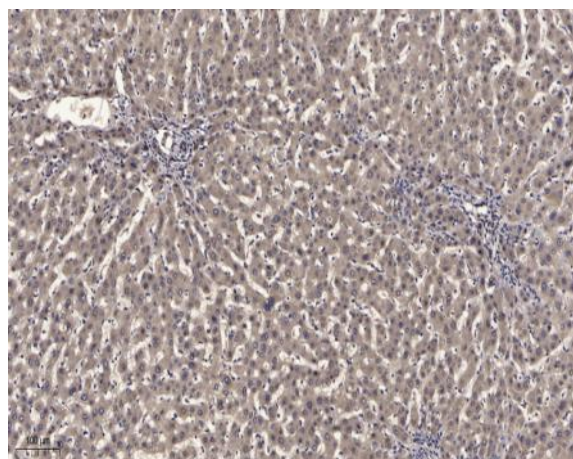




Western Blot analysis of HuvEc cells using PRPF18 Polyclonal Antibody diluted at 1:500 cells nucleus extracted by Minute TM Cytoplasmic and Nuclear Fractionation kit (SC-003, Inventbiotech, MN, USA).



Western blot analysis of lysates from 293, MCF-7, and HUVEC cells, using PRPF18 Antibody. The lane on the right is blocked with the synthesized peptide.



Immunohistochemical analysis of paraffin-embedded human liver cancer. 1, Antibody was diluted at 1:200(4° overnight). 2, Tris-EDTA, pH9.0 was used for antigen retrieval. 3, Secondary antibody was diluted at 1:200(room temperature, 45min).