

## PP2C $\kappa$ Polyclonal Antibody

<b>Catalog No :</b>	YT3832
<b>Reactivity :</b>	Human;Rat;Mouse;
<b>Applications :</b>	WB;IHC;IF;ELISA
<b>Target :</b>	PP2C $\kappa$
<b>Gene Name :</b>	PPM1K
<b>Protein Name :</b>	Protein phosphatase 1K mitochondrial
<b>Human Gene Id :</b>	152926
<b>Human Swiss Prot No :</b>	Q8N3J5
<b>Mouse Swiss Prot No :</b>	Q8BXN7
<b>Immunogen :</b>	The antiserum was produced against synthesized peptide derived from human PPM1K. AA range:205-254
<b>Specificity :</b>	PP2C $\kappa$ Polyclonal Antibody detects endogenous levels of PP2C $\kappa$ protein.
<b>Formulation :</b>	Liquid in PBS containing 50% glycerol, 0.5% BSA and 0.02% sodium azide.
<b>Source :</b>	Polyclonal, Rabbit,IgG
<b>Dilution :</b>	WB 1:500 - 1:2000. IHC 1:100 - 1:300. ELISA: 1:40000.. IF 1:50-200
<b>Purification :</b>	The antibody was affinity-purified from rabbit antiserum by affinity-chromatography using epitope-specific immunogen.
<b>Concentration :</b>	1 mg/ml
<b>Storage Stability :</b>	-15°C to -25°C/1 year(Do not lower than -25°C)
<b>Observed Band :</b>	45kD

**Background :** This gene encodes a member of the PPM family of  $Mn^{2+}/Mg^{2+}$ -dependent protein phosphatases. The encoded protein, essential for cell survival and development, is targeted to the mitochondria where it plays a key role in regulation of the mitochondrial permeability transition pore. [provided by RefSeq, Sep 2012],

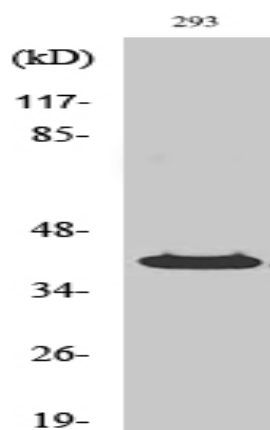
**Function :** catalytic activity:A phosphoprotein +  $H_2O$  = a protein + phosphate.,caution:Ref.9 has crystallized PPM1K in the presence of magnesium ions. However, PubMed:17336929 reported that no activity toward p-nitrophenylphosphate was seen in the absence of manganese ions and magnesium could not substitute for manganese.,cofactor:Binds 1 magnesium or manganese ion per subunit.,function:Regulates the mitochondrial permeability transition pore and is essential for cellular survival and development.,similarity:Belongs to the PP2C family.,similarity:Contains 1 PP2C-like domain.,

**Subcellular Location :** Mitochondrion matrix .

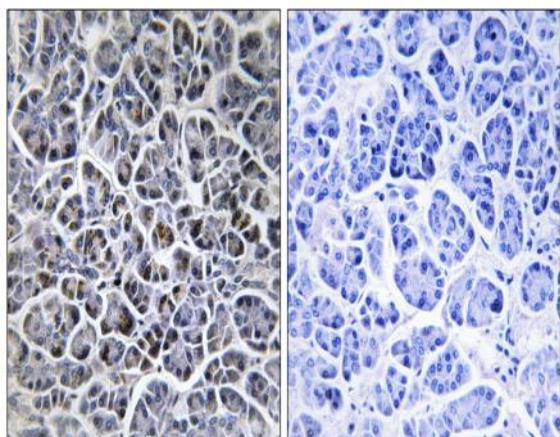
**Expression :** Amygdala,Cerebellum,Lymph node,Pancreas,Testis,

**Sort :** 12933

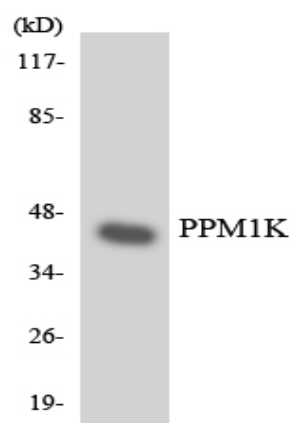
## Products Images



Western Blot analysis of various cells using PP2C $\kappa$  Polyclonal Antibody



Immunohistochemistry analysis of paraffin-embedded human pancreas tissue, using PPM1K Antibody. The picture on the right is blocked with the synthesized peptide.



Western blot analysis of the lysates from HeLa cells using PPM1K antibody.