

PP2Cε Polyclonal Antibody

Catalog No :	YT3831
Reactivity :	Human;Mouse;Rat
Applications :	WB;IHC
Target :	PP2Cε
Gene Name :	PPM1L
Protein Name :	Protein phosphatase 1L
Human Gene Id :	151742
Human Swiss Prot No :	Q5SGD2
Mouse Gene Id :	242083
Mouse Swiss Prot No :	Q8BHN0
Immunogen :	The antiserum was produced against synthesized peptide derived from human PPM1L. AA range:119-168
Specificity :	PP2Cε Polyclonal Antibody detects endogenous levels of PP2Cε protein.
Formulation :	Liquid in PBS containing 50% glycerol, 0.5% BSA and 0.02% sodium azide.
Source :	Polyclonal, Rabbit,IgG
Dilution :	WB 1:500-2000;IHC 1:50-300
Purification :	The antibody was affinity-purified from rabbit antiserum by affinity-chromatography using epitope-specific immunogen.
Concentration :	1 mg/ml
Storage Stability :	-15°C to -25°C/1 year(Do not lower than -25°C)

Observed Band : 42kD

Background :

The protein encoded by this gene is a magnesium or manganese-requiring phosphatase that is involved in several signaling pathways. The encoded protein downregulates apoptosis signal-regulating kinase 1, a protein that initiates a signaling cascade that leads to apoptosis when cells are subjected to cytotoxic stresses. This protein also is an endoplasmic reticulum transmembrane protein that helps regulate ceramide transport from the endoplasmic reticulum to the Golgi apparatus. Finally, this gene may be involved in adiposity since it is upregulated in adipose tissues. Several transcript variants encoding different isoforms have been found for this gene. [provided by RefSeq, Dec 2015],

Function :

catalytic activity:A phosphoprotein + H(2)O = a protein + phosphate.,cofactor:Binds 2 magnesium or manganese ions per subunit.,function:Acts as a suppressor of the SAPK signaling pathways by associating with and dephosphorylating MAP3K7/TAK1 and MAP3K5, and by attenuating the association between MAP3K7/TAK1 and MAP2K4 or MAP2K6.,similarity:Belongs to the PP2C family.,similarity:Contains 1 PP2C-like domain.,subunit:Interacts with MAP3K7/TAK1 (By similarity). Interacts with MAP3K5.,tissue specificity:Ubiquitous. Highly expressed in heart, placenta, lung, liver, kidney and pancreas.,

Subcellular Location :

Membrane ; Single-pass type I membrane protein .

Expression :

Ubiquitous. Highly expressed in heart, placenta, lung, liver, kidney and pancreas.

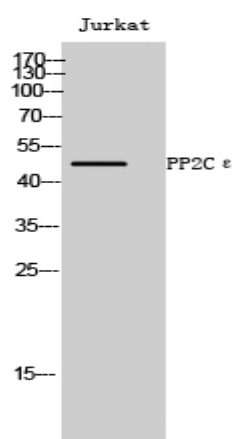
Sort :

12932

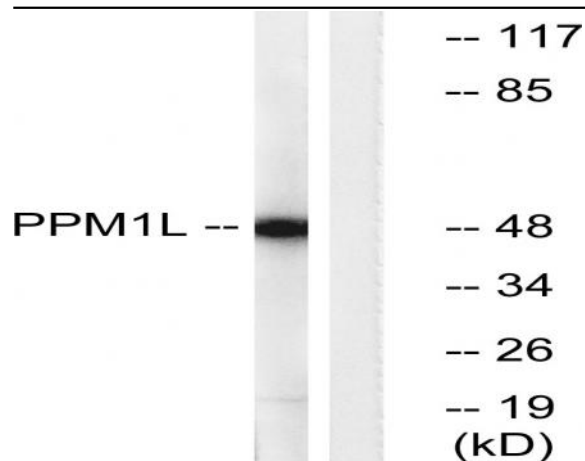
No4 :

1

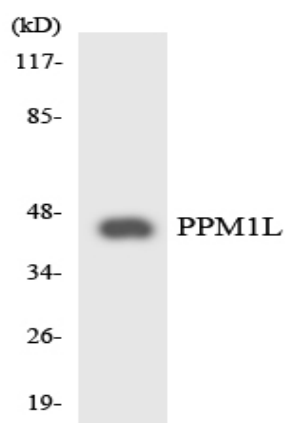
Products Images



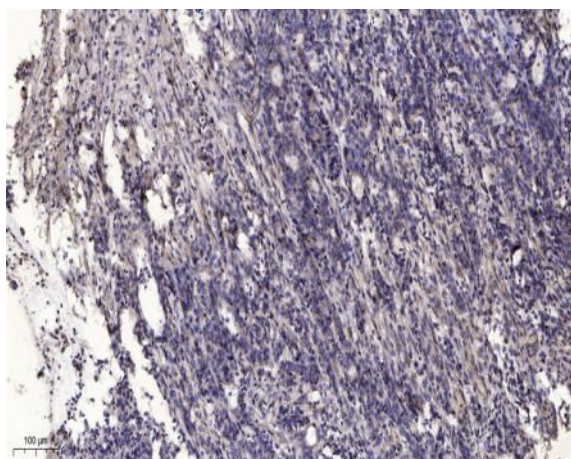
Western Blot analysis of Jurkat cells using PP2Cε Polyclonal Antibody



Western blot analysis of lysates from Jurkat cells, using PPM1L Antibody. The lane on the right is blocked with the synthesized peptide.



Western blot analysis of the lysates from HepG2 cells using PPM1L antibody.



Immunohistochemical analysis of paraffin-embedded human Gastric adenocarcinoma. 1, Antibody was diluted at 1:200(4° overnight). 2, Tris-EDTA,pH9.0 was used for antigen retrieval. 3,Secondary antibody was diluted at 1:200(room temperature, 45min).