

PMS2/PMS2CL Polyclonal Antibody

Catalog No :	YT3805
Reactivity :	Human;Rat;Mouse;
Applications :	IHC;IF;ELISA
Target :	PMS2/PMS2CL
Gene Name :	PMS2/PMS2CL
Protein Name :	Mismatch repair endonuclease PMS2/Protein PMS2CL
Human Gene Id :	5395
Human Swiss Prot No :	Q68D20/P54278
Immunogen :	The antiserum was produced against synthesized peptide derived from human PMS2CL. AA range:125-174
Specificity :	PMS2/PMS2CL Polyclonal Antibody detects endogenous levels of PMS2/PMS2CL protein.
Formulation :	Liquid in PBS containing 50% glycerol, 0.5% BSA and 0.02% sodium azide.
Source :	Polyclonal, Rabbit,IgG
Dilution :	IHC 1:100 - 1:300. ELISA: 1:5000.. IF 1:50-200
Purification :	The antibody was affinity-purified from rabbit antiserum by affinity-chromatography using epitope-specific immunogen.
Concentration :	1 mg/ml
Storage Stability :	-15°C to -25°C/1 year(Do not lower than -25°C)
Molecularweight :	21kD
Background :	caution:According to PubMed:15077197, it is a pseudogene. However, a

peptide specific to this protein was identified by mass spectrometry (PubMed:17525332). Given that the product described by PubMed:15077197 is located downstream and on another frame of the transcript, it may explain why PubMed:15256438 could not detect this protein on a Western blot.,PTM:Phosphorylated upon DNA damage, probably by ATM or ATR.,sequence caution:Wrong choice of transcript.,similarity:Belongs to the DNA mismatch repair mutL/hexB family.,

Function :

caution:According to PubMed:15077197, it is a pseudogene. However, a peptide specific to this protein was identified by mass spectrometry (PubMed:17525332). Given that the product described by PubMed:15077197 is located downstream and on another frame of the transcript, it may explain why PubMed:15256438 could not detect this protein on a Western blot.,PTM:Phosphorylated upon DNA damage, probably by ATM or ATR.,sequence caution:Wrong choice of transcript.,similarity:Belongs to the DNA mismatch repair mutL/hexB family.,

Subcellular Location :

mismatch repair complex,

Expression :

Fetal brain,Testis,

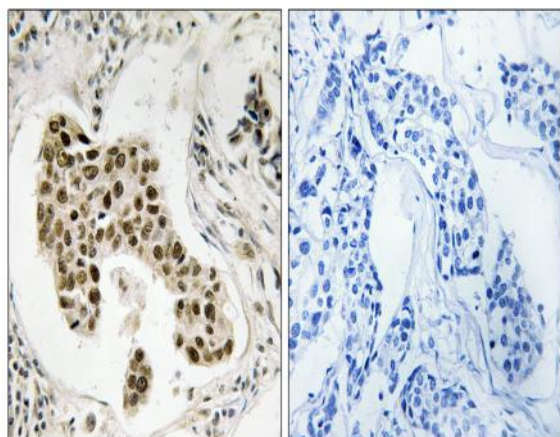
Sort :

12864

No4 :

1

Products Images



Immunohistochemistry analysis of paraffin-embedded human breast carcinoma, using PMS2/PMS2CL Antibody. The picture on the right is blocked with the synthesized peptide.