

PHAX Polyclonal Antibody

Catalog No :	YT3696
Reactivity :	Human;Rat;Mouse;
Applications :	WB;ELISA;IHC
Target :	PHAX
Fields :	>>Nucleocytoplasmic transport
Gene Name :	PHAX
Protein Name :	Phosphorylated adapter RNA export protein
Human Gene Id :	51808
Human Swiss Prot No :	Q9H814
Mouse Swiss Prot No :	Q9JJT9
Immunogen :	The antiserum was produced against synthesized peptide derived from human RNUXA. AA range:141-190
Specificity :	PHAX Polyclonal Antibody detects endogenous levels of PHAX protein.
Formulation :	Liquid in PBS containing 50% glycerol, 0.5% BSA and 0.02% sodium azide.
Source :	Polyclonal, Rabbit,IgG
Dilution :	WB 1:500-2000;IHC 1:50-300; ELISA 2000-20000
Purification :	The antibody was affinity-purified from rabbit antiserum by affinity-chromatography using epitope-specific immunogen.
Concentration :	1 mg/ml
Storage Stability :	-15°C to -25°C/1 year(Do not lower than -25°C)

Observed Band : 48kD

Background :

function:A phosphoprotein adapter involved in the XPO1-mediated U snRNA export from the nucleus. Bridge components required for U snRNA export, the cap binding complex (CBC)-bound snRNA on the one hand and the GTPase Ran in its active GTP-bound form together with the export receptor XPO1 on the other. Its phosphorylation in the nucleus is required for U snRNA export complex assembly and export, while its dephosphorylation in the cytoplasm causes export complex disassembly. It is recycled back to the nucleus via the importin alpha/beta heterodimeric import receptor. The directionality of nuclear export is thought to be conferred by an asymmetric distribution of the GTP- and GDP-bound forms of Ran between the cytoplasm and nucleus. Its compartmentalized phosphorylation cycle may also contribute to the directionality of export. Binds strongly to m7G-capped U1 and U5 small nuclear RNAs (snRNAs) in a sequence-unspecific manner and phosphorylation-independent manner (By similarity). Plays also a role in the biogenesis of U3 small nucleolar RNA (snoRNA). Involved in the U3 snoRNA transport from nucleoplasm to Cajal bodies. Binds strongly to m7G-capped U3, U8 and U13 precursor snoRNAs and weakly to trimethylated (TMG)-capped U3, U8 and U13 snoRNAs. Binds also to telomerase RNA.,PTM:Phosphorylated in the nucleus. Dephosphorylated in the cytoplasm (By similarity). Phosphorylated upon DNA damage, probably by ATM or ATR.,PTM:Phosphorylated upon DNA damage, probably by ATM or ATR.,similarity:Belongs to the PHAX family.,subcellular location:Located in the nucleoplasm and Cajal bodies. Shuttles between the nucleus and the cytoplasm. Shuttles between the nucleoplasm and Cajal bodies.,subunit:Found in a U snRNA export complex with PHAX/RNUXA, NCBP1, NCBP2, RAN, XPO1 and m7G-capped RNA. Part of a precomplex with PHAX/RNUXA, NCBP1, NCBP2 and m7G-capped RNA. Interacts with NCBP1 (By similarity). Found in a complex with snoRNA.,

Function :

function:A phosphoprotein adapter involved in the XPO1-mediated U snRNA export from the nucleus. Bridge components required for U snRNA export, the cap binding complex (CBC)-bound snRNA on the one hand and the GTPase Ran in its active GTP-bound form together with the export receptor XPO1 on the other. Its phosphorylation in the nucleus is required for U snRNA export complex assembly and export, while its dephosphorylation in the cytoplasm causes export complex disassembly. It is recycled back to the nucleus via the importin alpha/beta heterodimeric import receptor. The directionality of nuclear export is thought to be conferred by an asymmetric distribution of the GTP- and GDP-bound forms of Ran between the cytoplasm and nucleus. Its compartmentalized phosphorylation cycle may also contribute to the directionality of export. Binds strongly to m7G-capped U1 and U5 small nuclear RNAs (snRN

Subcellular Location :

Nucleus, nucleoplasm . Nucleus, Cajal body . Cytoplasm . Located in the nucleoplasm and Cajal bodies. Shuttles between the nucleus and the cytoplasm. Shuttles between the nucleoplasm and Cajal bodies. .

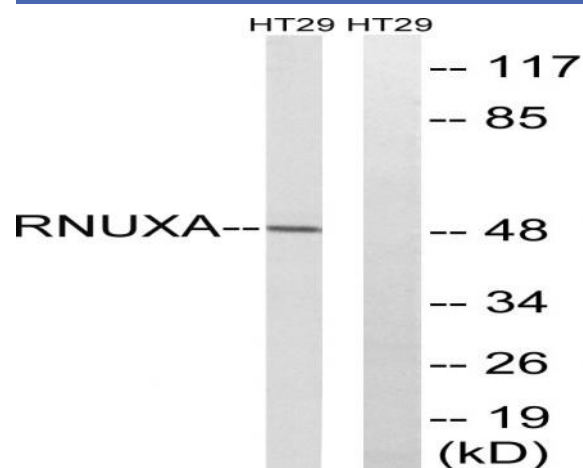
Expression :

Retinoblastoma,Skin,

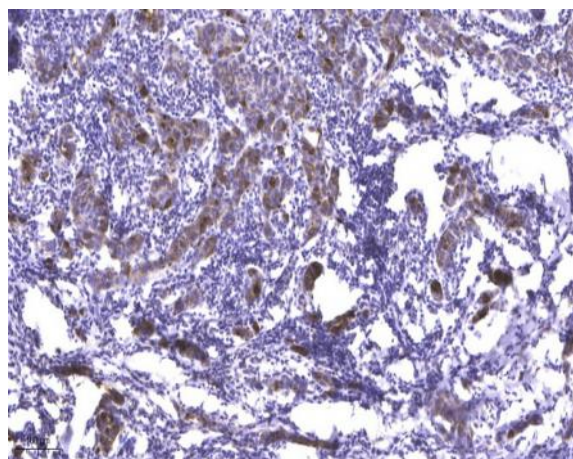
Sort : 11881

No4 : 1

Products Images



Western blot analysis of lysates from HT-29 cells, using RNUXA Antibody. The lane on the right is blocked with the synthesized peptide.



Immunohistochemical analysis of paraffin-embedded human Breast cancer. 1, Antibody was diluted at 1:200(4° overnight). 2, Tris-EDTA,pH9.0 was used for antigen retrieval. 3,Secondary antibody was diluted at 1:200(room temperature, 45min).