

Pepsin A Polyclonal Antibody

| | |
|------------------------------|---|
| Catalog No : | YT3660 |
| Reactivity : | Human;Rat;Mouse; |
| Applications : | WB;IHC;IF;ELISA |
| Target : | Pepsin A |
| Gene Name : | PGA3/PGA4/PGA5 |
| Protein Name : | Pepsin A |
| Human Gene Id : | 5222/643847 |
| Human Swiss Prot No : | P0DJD8/P0DJD7/P0DJD9 |
| Immunogen : | The antiserum was produced against synthesized peptide derived from human Pepsin A. AA range:258-307 |
| Specificity : | Pepsin A Polyclonal Antibody detects endogenous levels of Pepsin A protein. |
| Formulation : | Liquid in PBS containing 50% glycerol, 0.5% BSA and 0.02% sodium azide. |
| Source : | Polyclonal, Rabbit,IgG |
| Dilution : | WB 1:500 - 1:2000. IHC 1:100 - 1:300. ELISA: 1:10000.. IF 1:50-200 |
| Purification : | The antibody was affinity-purified from rabbit antiserum by affinity-chromatography using epitope-specific immunogen. |
| Concentration : | 1 mg/ml |
| Storage Stability : | -15°C to -25°C/1 year(Do not lower than -25°C) |
| Observed Band : | 42kD |
| Background : | This gene encodes a protein precursor of the digestive enzyme pepsin, a member of the peptidase A1 family of endopeptidases. The encoded precursor is |

secreted by gastric chief cells and undergoes autocatalytic cleavage in acidic conditions to form the active enzyme, which functions in the digestion of dietary proteins. This gene is found in a cluster of related genes on chromosome 11, each of which encodes one of multiple pepsinogens. Pepsinogen levels in serum may serve as a biomarker for atrophic gastritis and gastric cancer. [provided by RefSeq, Jul 2015],

Function :

catalytic activity:Preferential cleavage: hydrophobic, preferably aromatic, residues in P1 and P1' positions. Cleaves 1-Phe-|-Val-2, 4-Gln-|-His-5, 13-Glu-|-Ala-14, 14-Ala-|-Leu-15, 15-Leu-|-Tyr-16, 16-Tyr-|-Leu-17, 23-Gly-|-Phe-24, 24-Phe-|-Phe-25 and 25-Phe-|-Tyr-26 bonds in the B chain of insulin.,function:Shows particularly broad specificity; although bonds involving phenylalanine and leucine are preferred, many others are also cleaved to some extent.,similarity:Belongs to the peptidase A1 family.,

Subcellular Location :

extracellular exosome,multivesicular body lumen,

Expression :

Brain,Colon,Kidney,Placenta,Skeletal muscle,

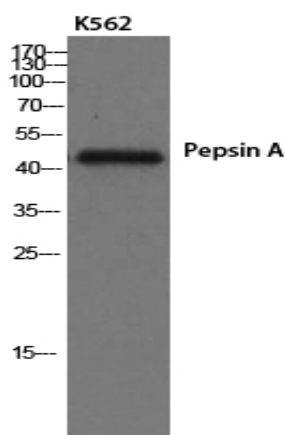
Sort :

11823

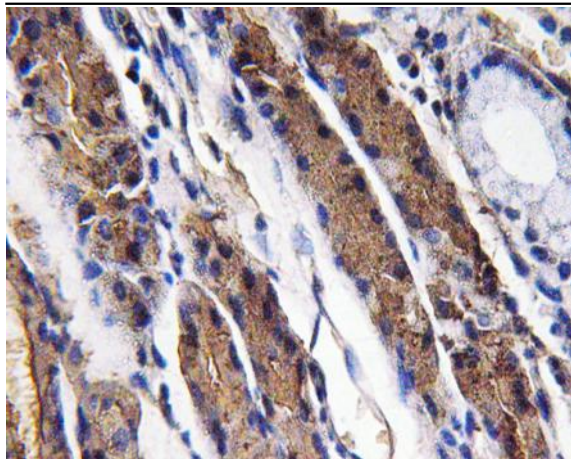
No4 :

1

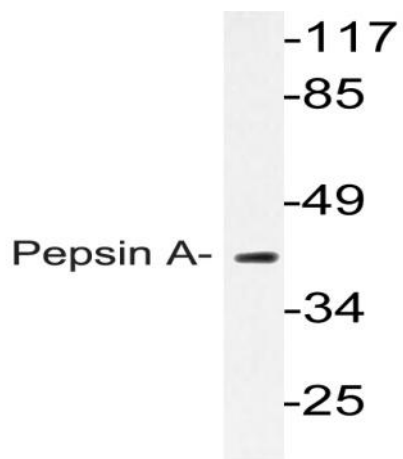
Products Images



Western Blot analysis of K562 cells using Pepsin A Polyclonal Antibody



Immunohistochemistry analysis of Pepsin A antibody in paraffin-embedded human lung carcinoma tissue.



Western blot analysis of lysate from K562 cells, using Pepsin A antibody.