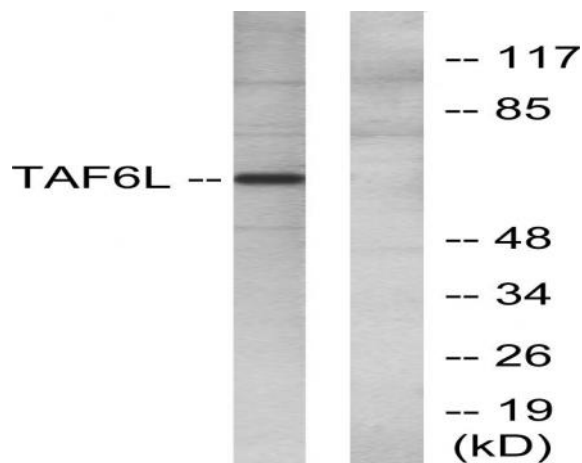
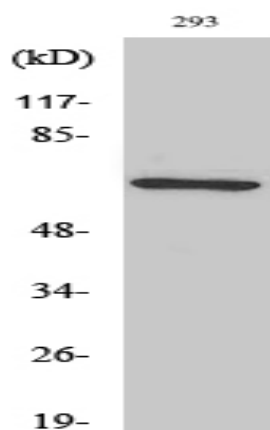
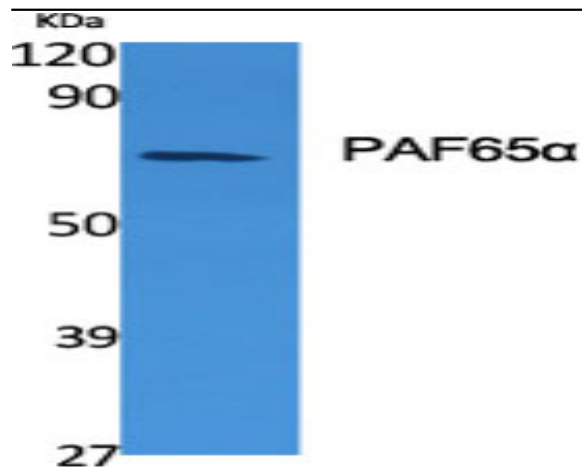


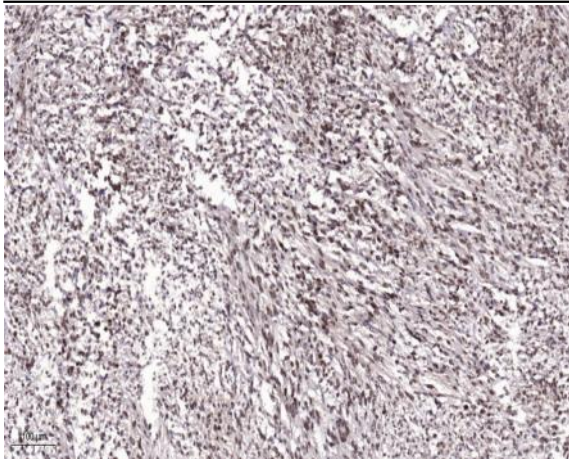
PAF65α Polyclonal Antibody

Catalog No :	YT3565
Reactivity :	Human;Mouse
Applications :	WB;IHC;IF;ELISA
Target :	PAF65α
Fields :	>>Basal transcription factors
Gene Name :	TAF6L
Protein Name :	TAF6-like RNA polymerase II p300/CBP-associated factor-associated factor 65 kDa subunit 6L
Human Gene Id :	10629
Human Swiss Prot No :	Q9Y6J9
Mouse Gene Id :	225895
Mouse Swiss Prot No :	Q8R2K4
Immunogen :	The antiserum was produced against synthesized peptide derived from human TAF6L. AA range:31-80
Specificity :	PAF65α Polyclonal Antibody detects endogenous levels of PAF65α protein.
Formulation :	Liquid in PBS containing 50% glycerol, 0.5% BSA and 0.02% sodium azide.
Source :	Polyclonal, Rabbit,IgG
Dilution :	WB 1:500 - 1:2000. IHC 1:100 - 1:300. ELISA: 1:40000.. IF 1:50-200
Purification :	The antibody was affinity-purified from rabbit antiserum by affinity-chromatography using epitope-specific immunogen.
Concentration :	1 mg/ml

Storage Stability :	-15 °C to -25 °C/1 year(Do not lower than -25 °C)
Observed Band :	68kD
Cell Pathway :	Basal transcription factors;
Background :	Initiation of transcription by RNA polymerase II requires the activities of more than 70 polypeptides. The protein that coordinates these activities is transcription factor IID (TFIID), which binds to the core promoter to position the polymerase properly, serves as the scaffold for assembly of the remainder of the transcription complex, and acts as a channel for regulatory signals. TFIID is composed of the TATA-binding protein (TBP) and a group of evolutionarily conserved proteins known as TBP-associated factors or TAFs. TAFs may participate in basal transcription, serve as coactivators, function in promoter recognition or modify general transcription factors (GTFs) to facilitate complex assembly and transcription initiation. This gene encodes a protein that is a component of the PCAF histone acetylase complex and structurally similar to one of the histone-like TAFs,
Function :	function:Functions as a component of the PCAF complex. The PCAF complex is capable of efficiently acetylating histones in a nucleosomal context. The PCAF complex could be considered as the human version of the yeast SAGA complex.,PTM:Phosphorylated upon DNA damage, probably by ATM or ATR.,similarity:Belongs to the TAF6 family.,subunit:The PCAF complex is composed of a number of TBP-associated factors (TAFs), such as TAF5, TAF5L, TAF6, TAF6L, TAF9, TAF10 and TAF12, PCAF, and also PCAF-associated factors (PAFs), such as TADA2L/ADA2, TADA3L/ADA3 and SPT3. Component of the STAGA transcription coactivator-HAT complex, at least composed of SUPT3H, GCN5L2, TAF5L, TAF6L, SUPT7L, TADA3L, TAD1L, TAF10, TAF12, TRRAP and TAF9.,
Subcellular Location :	Nucleus .
Sort :	11570
No4 :	1

Products Images





Immunohistochemical analysis of paraffin-embedded human Colon cancer. 1, Antibody was diluted at 1:200(4° overnight). 2, Tris-EDTA,pH9.0 was used for antigen retrieval. 3,Secondary antibody was diluted at 1:200(room temperature, 45min).