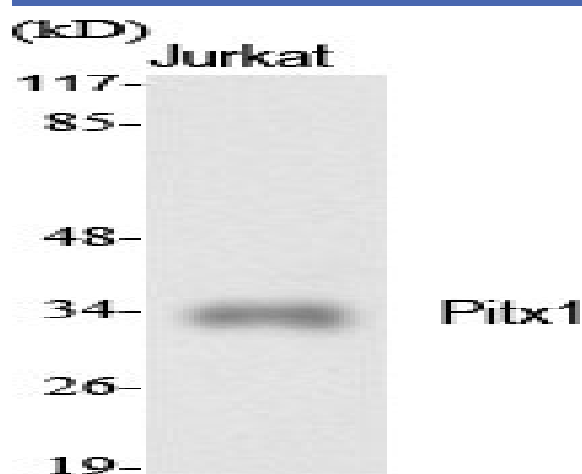


Pitx1 Polyclonal Antibody

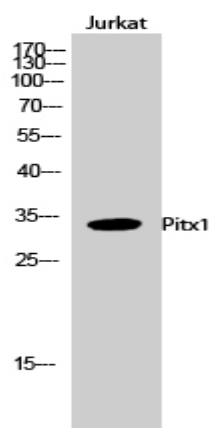
Catalog No :	YT3740
Reactivity :	Human;Mouse;Rat
Applications :	WB;IHC;IF;ELISA
Target :	Pitx1
Gene Name :	PITX1
Protein Name :	Pituitary homeobox 1
Human Gene Id :	5307
Human Swiss Prot No :	P78337
Mouse Gene Id :	18740
Mouse Swiss Prot No :	P70314
Rat Gene Id :	113983
Rat Swiss Prot No :	Q99NA7
Immunogen :	The antiserum was produced against synthesized peptide derived from human PITX1. AA range:121-170
Specificity :	Pitx1 Polyclonal Antibody detects endogenous levels of Pitx1 protein.
Formulation :	Liquid in PBS containing 50% glycerol, 0.5% BSA and 0.02% sodium azide.
Source :	Polyclonal, Rabbit,IgG
Dilution :	WB 1:500 - 1:2000. IHC 1:100 - 1:300. ELISA: 1:20000.. IF 1:50-200
Purification :	The antibody was affinity-purified from rabbit antiserum by affinity-chromatography using epitope-specific immunogen.

Concentration :	1 mg/ml
Storage Stability :	-15°C to -25°C/1 year(Do not lower than -25°C)
Observed Band :	34kD
Background :	This gene encodes a member of the RIEG/PITX homeobox family, which is in the bicoid class of homeodomain proteins. Members of this family are involved in organ development and left-right asymmetry. This protein acts as a transcriptional regulator involved in basal and hormone-regulated activity of prolactin. [provided by RefSeq, Jul 2008],
Function :	function:May play a role in the development of anterior structures, and in particular, the brain and facies and in specifying the identity or structure of hindlimb.,similarity:Belongs to the paired homeobox family. Bicoid subfamily.,similarity:Contains 1 homeobox DNA-binding domain.,similarity:Contains 1 OAR domain.,
Subcellular Location :	Nucleus.
Expression :	Embryo,Epithelium,Pancreas,Placenta,
Sort :	12722
Host :	Rabbit
Modifications :	Unmodified

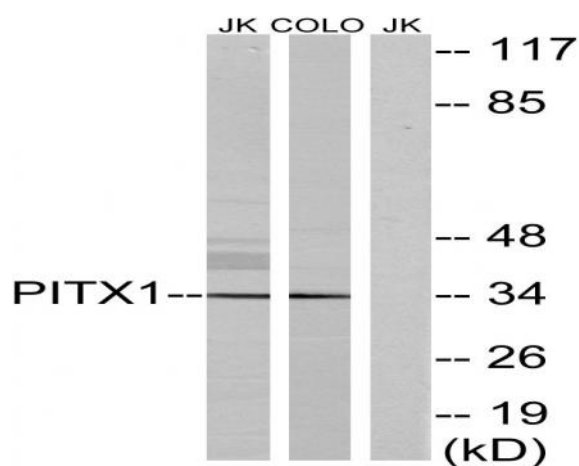
Products Images



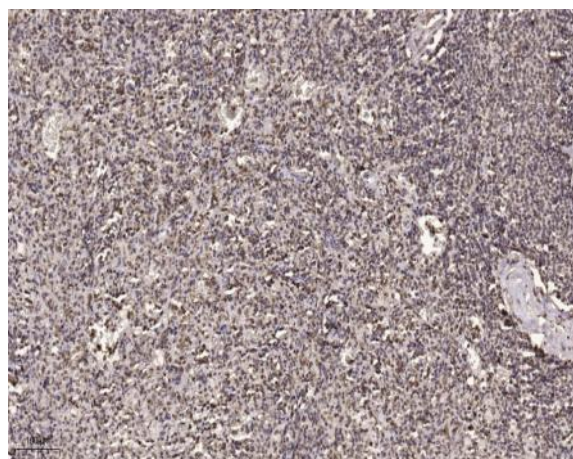
Western Blot analysis of various cells using Pitx1 Polyclonal Antibody cells nucleus extracted by Minute TM Cytoplasmic and Nuclear Fractionation kit (SC-003, Invent biotech, MN, USA).



Western Blot analysis of Jurkat cells using Pitx1 Polyclonal Antibody cells nucleus extracted by Minute TM Cytoplasmic and Nuclear Fractionation kit (SC-003, Invent biotech, MN, USA).



Western blot analysis of lysates from Jurkat and COLO cells, using PITX1 Antibody. The lane on the right is blocked with the synthesized peptide.



Immunohistochemical analysis of paraffin-embedded human spleen. 1, Tris-EDTA, pH 9.0 was used for antigen retrieval. 2 Antibody was diluted at 1:200 (4° overnight). 3, Secondary antibody was diluted at 1:200 (room temperature, 45 min).