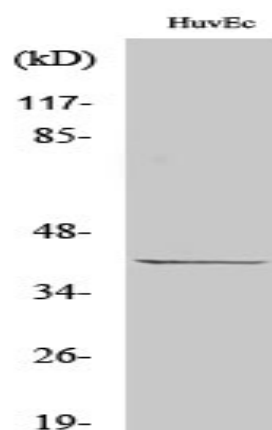


## p39 Polyclonal Antibody

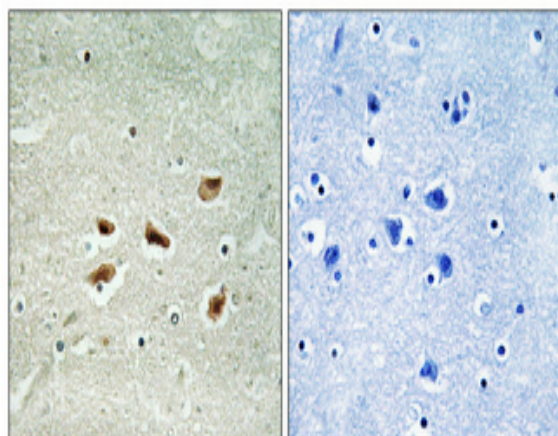
|                              |   |
|------------------------------|---|
| <b>Catalog No :</b>          | YT3515  |
| <b>Reactivity :</b>          | Human;Rat;Mouse;  |
| <b>Applications :</b>        | WB;IHC;IF;ELISA   |
| <b>Target :</b>              | p39   |
| <b>Gene Name :</b>           | CDK5R2  |
| <b>Protein Name :</b>        | Cyclin-dependent kinase 5 activator 2   |
| <b>Human Gene Id :</b>       | 8941  |
| <b>Human Swiss Prot No :</b> | Q13319  |
| <b>Mouse Swiss Prot No :</b> | O35926  |
| <b>Immunogen :</b>           | The antiserum was produced against synthesized peptide derived from human CDK5R2. AA range:81-130                     |
| <b>Specificity :</b>         | p39 Polyclonal Antibody detects endogenous levels of p39 protein.   |
| <b>Formulation :</b>         | Liquid in PBS containing 50% glycerol, 0.5% BSA and 0.02% sodium azide.   |
| <b>Source :</b>              | Polyclonal, Rabbit,IgG  |
| <b>Dilution :</b>            | WB 1:500 - 1:2000. IHC 1:100 - 1:300. ELISA: 1:20000.. IF 1:50-200  |
| <b>Purification :</b>        | The antibody was affinity-purified from rabbit antiserum by affinity-chromatography using epitope-specific immunogen. |
| <b>Concentration :</b>       | 1 mg/ml   |
| <b>Storage Stability :</b>   | -15°C to -25°C/1 year(Do not lower than -25°C)  |
| <b>Observed Band :</b>       | 40kD  |

|                               |   |
|-------------------------------|---|
| <b>Background :</b>           | The protein encoded by this gene is a neuron-specific activator of CDK5 kinase. It associates with CDK5 to form an active kinase. This protein and neuron-specific CDK5 activator CDK5R1/p39NCK5A both share limited similarity to cyclins, and thus may define a distinct family of cyclin-dependent kinase activating proteins. [provided by RefSeq, Jul 2008], |
| <b>Function :</b>             | function:Activator of CDK5/TPKII.,similarity:Belongs to the cyclin-dependent kinase 5 activator family.,subunit:Heterodimer of a catalytic subunit and a regulatory subunit.,tissue specificity:Brain and neuron specific.,   |
| <b>Subcellular Location :</b> | Cell membrane ; Lipid-anchor ; Cytoplasmic side .   |
| <b>Expression :</b>           | Brain and neuron specific.  |
| <b>Sort :</b>                 | 11419   |
| <b>No4 :</b>                  | 1   |

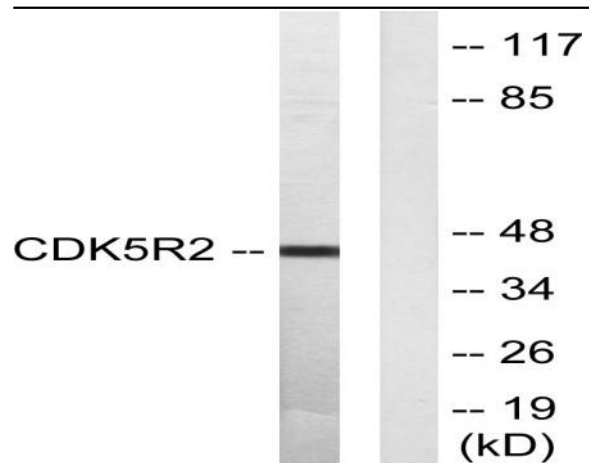
## Products Images



Western Blot analysis of various cells using p39 Polyclonal Antibody cells nucleus extracted by Minute TM Cytoplasmic and Nuclear Fractionation kit (SC-003, Inventibiotec, MN, USA).



Immunohistochemical analysis of paraffin-embedded Human brain. Antibody was diluted at 1:100 (4° overnight). High-pressure and temperature Tris-EDTA, pH 8.0 was used for antigen retrieval. Negative control (right) obtained from antibody was pre-absorbed by immunogen peptide.



Western blot analysis of lysates from HUVEC cells, using CDK5R2 Antibody. The lane on the right is blocked with the synthesized peptide.