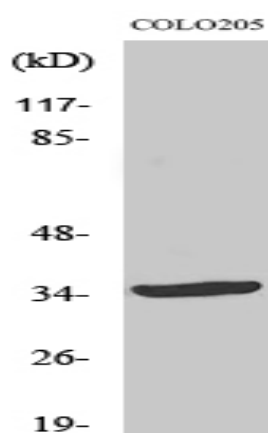


OTUD2 Polyclonal Antibody

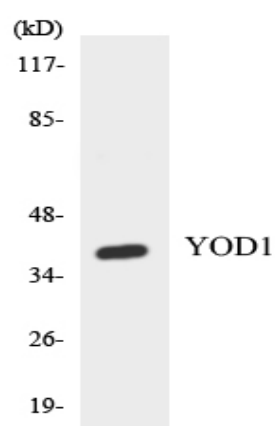
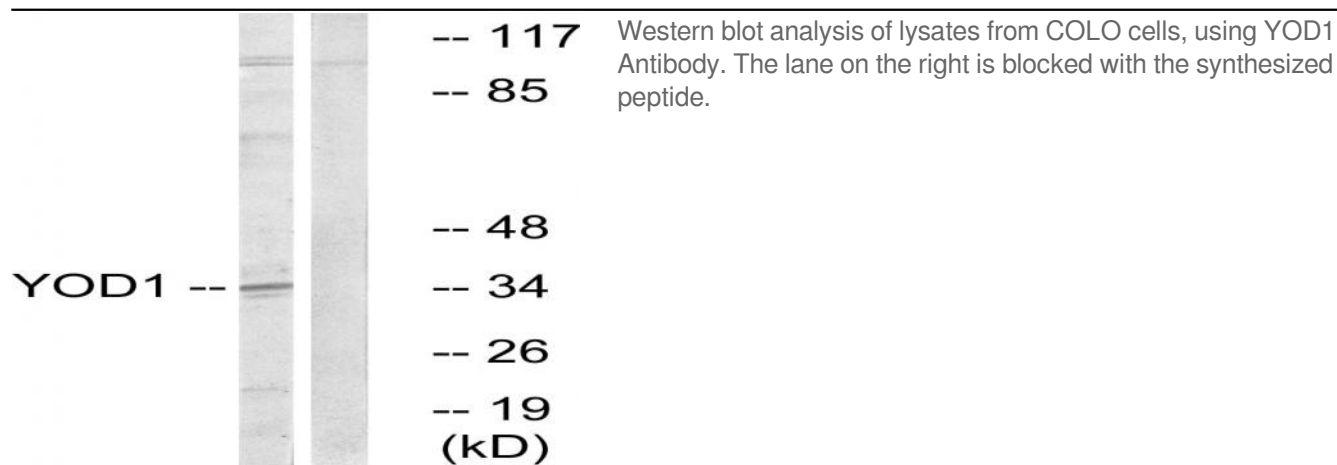
Catalog No :	YT3476
Reactivity :	Human;Rat;Mouse;
Applications :	WB;ELISA
Target :	OTUD2
Fields :	>>Protein processing in endoplasmic reticulum
Gene Name :	YOD1
Protein Name :	Ubiquitin thioesterase OTU1
Human Gene Id :	55432
Human Swiss Prot No :	Q5VVQ6
Mouse Swiss Prot No :	Q8CB27
Immunogen :	The antiserum was produced against synthesized peptide derived from human YOD1. AA range:116-165
Specificity :	OTUD2 Polyclonal Antibody detects endogenous levels of OTUD2 protein.
Formulation :	Liquid in PBS containing 50% glycerol, 0.5% BSA and 0.02% sodium azide.
Source :	Polyclonal, Rabbit,IgG
Dilution :	WB 1:500 - 1:2000. ELISA: 1:10000. Not yet tested in other applications.
Purification :	The antibody was affinity-purified from rabbit antiserum by affinity-chromatography using epitope-specific immunogen.
Concentration :	1 mg/ml
Storage Stability :	-15°C to -25°C/1 year(Do not lower than -25°C)

Observed Band :	35kD
Cell Pathway :	Limonene and pinene degradation;Biosynthesis of unsaturated fatty acids;
Background :	Protein ubiquitination controls many intracellular processes, including cell cycle progression, transcriptional activation, and signal transduction. This dynamic process, involving ubiquitin conjugating enzymes and deubiquitinating enzymes, adds and removes ubiquitin. Deubiquitinating enzymes are cysteine proteases that specifically cleave ubiquitin from ubiquitin-conjugated protein substrates. The protein encoded by this gene belongs to a DUB subfamily characterized by an ovarian tumor (OTU) domain. Alternative splicing results in multiple transcript variants. [provided by RefSeq, Jan 2013],
Function :	function:Hydrolase that can remove conjugated ubiquitin from proteins and may therefore play an important regulatory role at the level of protein turnover by preventing degradation.,sequence caution:Wrong choice of frame.,similarity:Contains 1 C2H2-type zinc finger.,similarity:Contains 1 OTU domain.,
Subcellular Location :	Cytoplasm . Recruited to damaged lysosomes decorated with K48-linked ubiquitin chains. .
Expression :	Fetal liver,Spinal cord,Testis,
Sort :	11332
No4 :	1

Products Images



Western Blot analysis of various cells using OTUD2 Polyclonal Antibody



Western blot analysis of the lysates from HT-29 cells using YOD1 antibody.