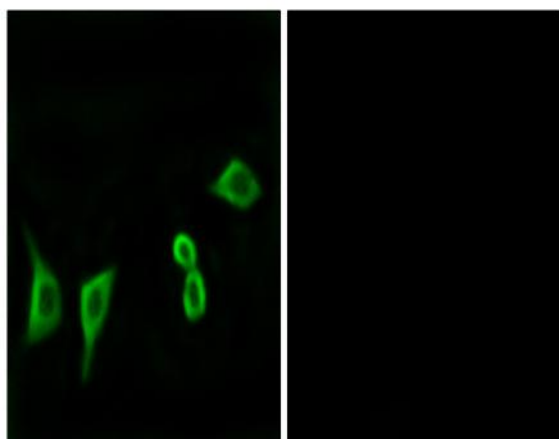


Olfactory receptor 8G2 Polyclonal Antibody

Catalog No :	YT3443
Reactivity :	Human;Rat;Mouse;
Applications :	WB;IF;ELISA
Target :	Olfactory receptor 8G2
Gene Name :	OR8G2
Protein Name :	Olfactory receptor 8G2
Human Gene Id :	26492
Human Swiss Prot No :	Q15614
Immunogen :	The antiserum was produced against synthesized peptide derived from human OR8G2. AA range:237-286
Specificity :	Olfactory receptor 8G2 Polyclonal Antibody detects endogenous levels of Olfactory receptor 8G2 protein.
Formulation :	Liquid in PBS containing 50% glycerol, 0.5% BSA and 0.02% sodium azide.
Source :	Polyclonal, Rabbit,IgG
Dilution :	WB 1:500 - 1:2000. IF 1:200 - 1:1000. ELISA: 1:10000. Not yet tested in other applications.
Purification :	The antibody was affinity-purified from rabbit antiserum by affinity-chromatography using epitope-specific immunogen.
Concentration :	1 mg/ml
Storage Stability :	-15°C to -25°C/1 year(Do not lower than -25°C)
Observed Band :	33kD

Cell Pathway :	Olfactory transduction;
Background :	<p>olfactory receptor family 8 subfamily G member 2(OR8G2) Homo sapiens</p> <p>Olfactory receptors interact with odorant molecules in the nose, to initiate a neuronal response that triggers the perception of a smell. The olfactory receptor proteins are members of a large family of G-protein-coupled receptors (GPCR) arising from single coding-exon genes. Olfactory receptors share a 7-transmembrane domain structure with many neurotransmitter and hormone receptors and are responsible for the recognition and G protein-mediated transduction of odorant signals. The olfactory receptor gene family is the largest in the genome. The nomenclature assigned to the olfactory receptor genes and proteins for this organism is independent of other organisms. [provided by RefSeq, Jul 2008],</p>
Function :	function:Odorant receptor .,similarity:Belongs to the G-protein coupled receptor 1 family.,
Subcellular Location :	plasma membrane,integral component of membrane,
Expression :	Pooled,Testicle,Testis,
Sort :	11272
No4 :	1

Products Images



Immunofluorescence analysis of LOVO cells, using OR8G2 Antibody. The picture on the right is blocked with the synthesized peptide.

