

PCTAIRE-2 Polyclonal Antibody

Catalog No :	YT3623
Reactivity :	Human;Mouse;Rat
Applications :	WB;ELISA
Target :	PCTAIRE-2
Gene Name :	CDK17
Protein Name :	Cyclin-dependent kinase 17
Human Gene Id :	5128
Human Swiss Prot No :	Q00537
Mouse Gene Id :	237459
Mouse Swiss Prot No :	Q8K0D0
Rat Swiss Prot No :	O35831
Immunogen :	Synthesized peptide derived from PCTAIRE-2 . at AA range: 70-150
Specificity :	PCTAIRE-2 Polyclonal Antibody detects endogenous levels of PCTAIRE-2 protein.
Formulation :	Liquid in PBS containing 50% glycerol, 0.5% BSA and 0.02% sodium azide.
Source :	Polyclonal, Rabbit,IgG
Dilution :	WB 1:500 - 1:2000. ELISA: 1:20000. Not yet tested in other applications.
Purification :	The antibody was affinity-purified from rabbit antiserum by affinity-chromatography using epitope-specific immunogen.
Concentration :	1 mg/ml

Storage Stability : -15°C to -25°C/1 year (Do not lower than -25°C)

Molecularweight : 60kD

Background : The protein encoded by this gene belongs to the cdc2/cdkx subfamily of the ser/thr family of protein kinases. It has similarity to a rat protein that is thought to play a role in terminally differentiated neurons. Alternatively spliced transcript variants encoding different isoforms have been found. [provided by RefSeq, Jul 2010],

Function : similarity:Belongs to the protein kinase superfamily.,

Expression : Hippocampus,

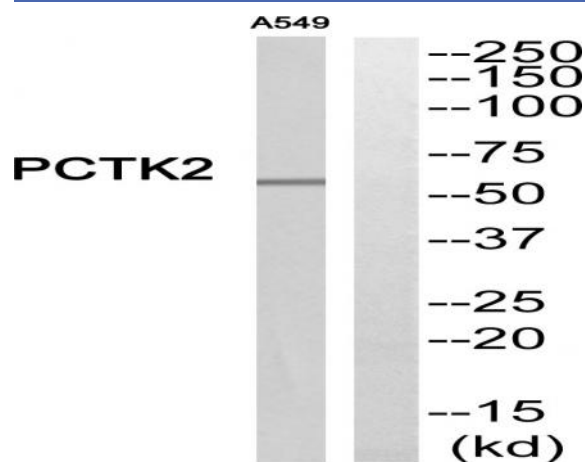
Sort : 11725

No4 : 1

Host : Rabbit

Modifications : Unmodified

Products Images



Western blot analysis of PCKT2 Antibody. The lane on the right is blocked with the PCKT2 peptide.