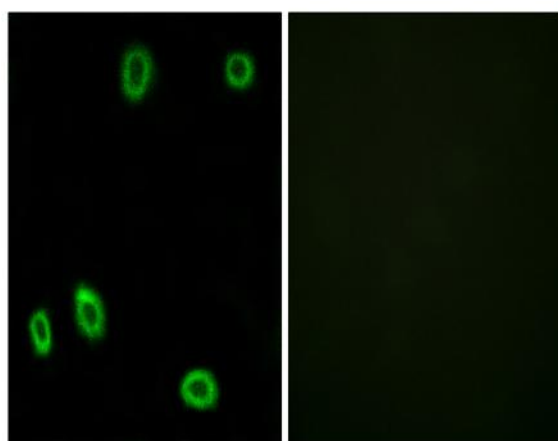


Olfactory receptor 5L1/2 Polyclonal Antibody

Catalog No :	YT3410
Reactivity :	Human;Rat;Mouse;
Applications :	IF;ELISA
Target :	Olfactory receptor 5L1/2
Fields :	>>Olfactory transduction
Gene Name :	OR5L1/OR5L2
Protein Name :	Olfactory receptor 5L1/2
Human Gene Id :	219437/26338
Human Swiss Prot No :	Q8NGL2/Q8NGL0
Immunogen :	The antiserum was produced against synthesized peptide derived from human OR5L1/2. AA range:55-104
Specificity :	Olfactory receptor 5L1/2 Polyclonal Antibody detects endogenous levels of Olfactory receptor 5L1/2 protein.
Formulation :	Liquid in PBS containing 50% glycerol, 0.5% BSA and 0.02% sodium azide.
Source :	Polyclonal, Rabbit,IgG
Dilution :	IF 1:200 - 1:1000. ELISA: 1:5000. Not yet tested in other applications.
Purification :	The antibody was affinity-purified from rabbit antiserum by affinity-chromatography using epitope-specific immunogen.
Concentration :	1 mg/ml
Storage Stability :	-15°C to -25°C/1 year(Do not lower than -25°C)
Molecularweight :	35kD

Cell Pathway :	Olfactory transduction;
Background :	Olfactory receptors interact with odorant molecules in the nose, to initiate a neuronal response that triggers the perception of a smell. The olfactory receptor proteins are members of a large family of G-protein-coupled receptors (GPCR) arising from single coding-exon genes. Olfactory receptors share a 7-transmembrane domain structure with many neurotransmitter and hormone receptors and are responsible for the recognition and G protein-mediated transduction of odorant signals. The olfactory receptor gene family is the largest in the genome. The nomenclature assigned to the olfactory receptor genes and proteins for this organism is independent of other organisms. This olfactory receptor gene is a segregating pseudogene, where some individuals have an allele that encodes a functional olfactory receptor, while other individuals have an allele encoding a
Function :	function:Odorant receptor .,similarity:Belongs to the G-protein coupled receptor 1 family.,
Subcellular Location :	Cell membrane; Multi-pass membrane protein.
Sort :	11239
No4 :	1

Products Images



Immunofluorescence analysis of HUVEC cells, using OR5L1/2 Antibody. The picture on the right is blocked with the synthesized peptide.