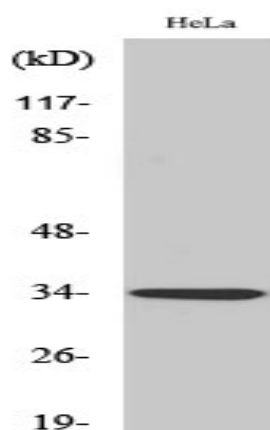


Olfactory receptor 4P4 Polyclonal Antibody

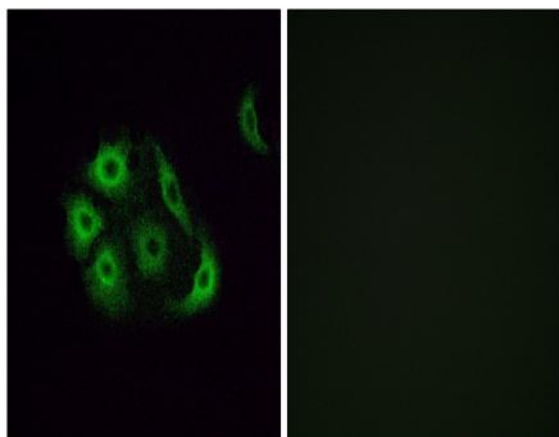
Catalog No :	YT3353
Reactivity :	Human;Rat;Mouse;
Applications :	WB;IF;ELISA
Target :	Olfactory receptor 4P4
Fields :	>>Olfactory transduction
Gene Name :	OR4P4
Protein Name :	Olfactory receptor 4P4
Human Gene Id :	81300
Human Swiss Prot No :	Q8NGL7
Immunogen :	The antiserum was produced against synthesized peptide derived from human OR4P4. AA range:260-309
Specificity :	Olfactory receptor 4P4 Polyclonal Antibody detects endogenous levels of Olfactory receptor 4P4 protein.
Formulation :	Liquid in PBS containing 50% glycerol, 0.5% BSA and 0.02% sodium azide.
Source :	Polyclonal, Rabbit,IgG
Dilution :	WB 1:500 - 1:2000. IF 1:200 - 1:1000. ELISA: 1:20000. Not yet tested in other applications.
Purification :	The antibody was affinity-purified from rabbit antiserum by affinity-chromatography using epitope-specific immunogen.
Concentration :	1 mg/ml
Storage Stability :	-15°C to -25°C/1 year(Do not lower than -25°C)

Observed Band :	34kD
Cell Pathway :	Olfactory transduction;
Background :	<p>olfactory receptor family 4 subfamily P member 4(OR4P4) Homo sapiens Olfactory receptors interact with odorant molecules in the nose, to initiate a neuronal response that triggers the perception of a smell. The olfactory receptor proteins are members of a large family of G-protein-coupled receptors (GPCR) arising from single coding-exon genes. Olfactory receptors share a 7-transmembrane domain structure with many neurotransmitter and hormone receptors and are responsible for the recognition and G protein-mediated transduction of odorant signals. The olfactory receptor gene family is the largest in the genome. The nomenclature assigned to the olfactory receptor genes and proteins for this organism is independent of other organisms. [provided by RefSeq, Jul 2008],</p>
Function :	function:Odorant receptor .,similarity:Belongs to the G-protein coupled receptor 1 family.,
Subcellular Location :	Cell membrane; Multi-pass membrane protein.
Sort :	11182
No4 :	1

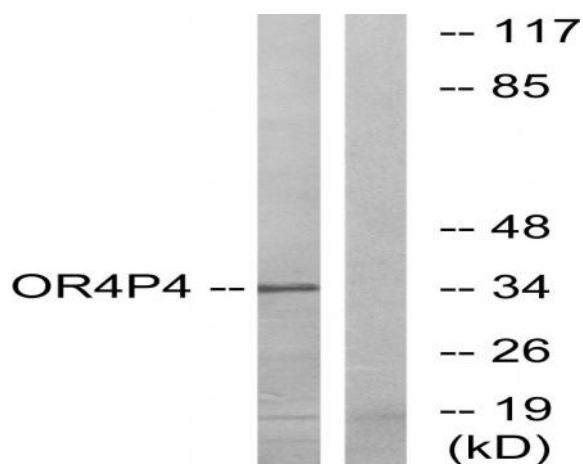
Products Images



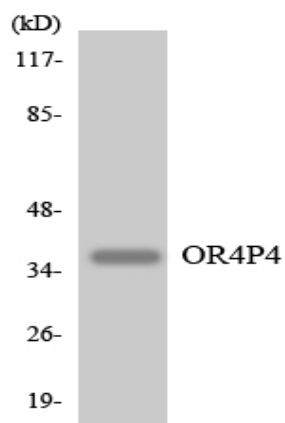
Western Blot analysis of various cells using Olfactory receptor 4P4 Polyclonal Antibody



Immunofluorescence analysis of A549 cells, using OR4P4 Antibody. The picture on the right is blocked with the synthesized peptide.



Western blot analysis of lysates from HeLa cells, using OR4P4 Antibody. The lane on the right is blocked with the synthesized peptide.



Western blot analysis of the lysates from COLO205 cells using OR4P4 antibody.