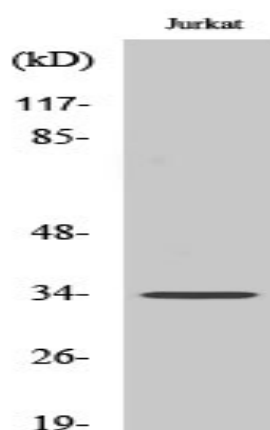


Olfactory receptor 4D1 Polyclonal Antibody

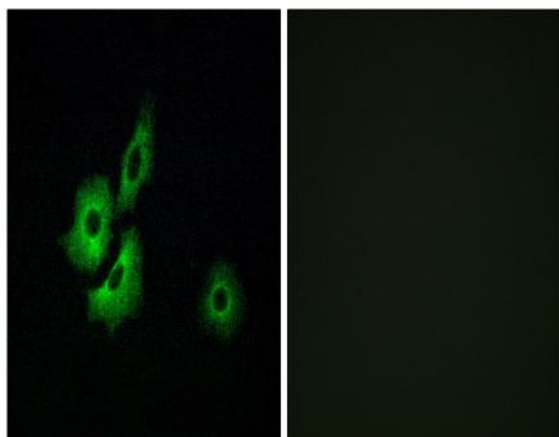
Catalog No :	YT3340
Reactivity :	Human;Rat;Mouse;
Applications :	WB;IF;ELISA
Target :	Olfactory receptor 4D1
Fields :	>>Olfactory transduction
Gene Name :	OR4D1
Protein Name :	Olfactory receptor 4D1
Human Gene Id :	26689
Human Swiss Prot No :	Q15615
Immunogen :	The antiserum was produced against synthesized peptide derived from human OR4D1. AA range:261-310
Specificity :	Olfactory receptor 4D1 Polyclonal Antibody detects endogenous levels of Olfactory receptor 4D1 protein.
Formulation :	Liquid in PBS containing 50% glycerol, 0.5% BSA and 0.02% sodium azide.
Source :	Polyclonal, Rabbit,IgG
Dilution :	WB 1:500 - 1:2000. IF 1:200 - 1:1000. ELISA: 1:40000. Not yet tested in other applications.
Purification :	The antibody was affinity-purified from rabbit antiserum by affinity-chromatography using epitope-specific immunogen.
Concentration :	1 mg/ml
Storage Stability :	-15°C to -25°C/1 year(Do not lower than -25°C)

Observed Band :	34kD
Cell Pathway :	Olfactory transduction;
Background :	<p>olfactory receptor family 4 subfamily D member 1(OR4D1) Homo sapiens Olfactory receptors interact with odorant molecules in the nose, to initiate a neuronal response that triggers the perception of a smell. The olfactory receptor proteins are members of a large family of G-protein-coupled receptors (GPCR) arising from single coding-exon genes. Olfactory receptors share a 7-transmembrane domain structure with many neurotransmitter and hormone receptors and are responsible for the recognition and G protein-mediated transduction of odorant signals. The olfactory receptor gene family is the largest in the genome. The nomenclature assigned to the olfactory receptor genes and proteins for this organism is independent of other organisms. [provided by RefSeq, Jul 2008],</p>
Function :	function:Odorant receptor .,similarity:Belongs to the G-protein coupled receptor 1 family.,
Subcellular Location :	Cell membrane; Multi-pass membrane protein.
Expression :	Pooled, Testicle, Testis,
Sort :	11169
No4 :	1

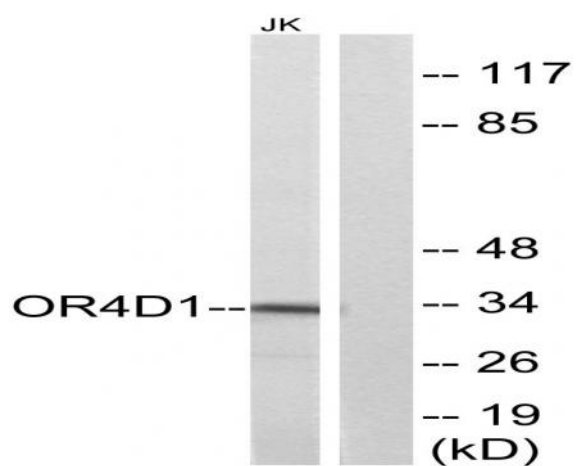
Products Images



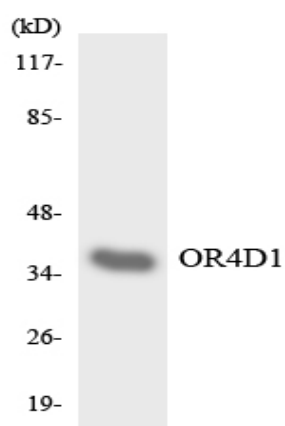
Western Blot analysis of various cells using Olfactory receptor 4D1 Polyclonal Antibody diluted at 1:500



Immunofluorescence analysis of A549 cells, using OR4D1 Antibody. The picture on the right is blocked with the synthesized peptide.



Western blot analysis of lysates from Jurkat cells, using OR4D1 Antibody. The lane on the right is blocked with the synthesized peptide.



Western blot analysis of the lysates from HepG2 cells using OR4D1 antibody.