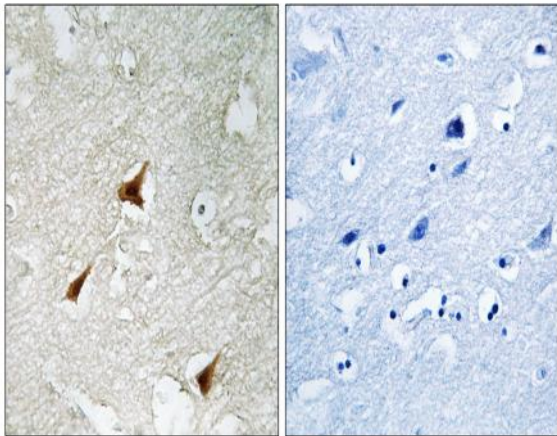


## p19 Polyclonal Antibody

<b>Catalog No :</b>	YT3496
<b>Reactivity :</b>	Human;Rat;Mouse;
<b>Applications :</b>	IHC;IF;WB;ELISA
<b>Target :</b>	p19
<b>Fields :</b>	>>FoxO signaling pathway;>>Cell cycle
<b>Gene Name :</b>	CDKN2D
<b>Protein Name :</b>	Cyclin-dependent kinase 4 inhibitor D
<b>Human Gene Id :</b>	1032
<b>Human Swiss Prot No :</b>	P55273
<b>Mouse Swiss Prot No :</b>	Q60773
<b>Immunogen :</b>	The antiserum was produced against synthesized peptide derived from human CDKN2D. AA range:96-145
<b>Specificity :</b>	p19 Polyclonal Antibody detects endogenous levels of p19 protein.
<b>Formulation :</b>	Liquid in PBS containing 50% glycerol, 0.5% BSA and 0.02% sodium azide.
<b>Source :</b>	Polyclonal, Rabbit,IgG
<b>Dilution :</b>	WB 1:500 - 1:2000. IHC 1:100 - 1:300. ELISA: 1:10000.. IF 1:50-200
<b>Purification :</b>	The antibody was affinity-purified from rabbit antiserum by affinity-chromatography using epitope-specific immunogen.
<b>Concentration :</b>	1 mg/ml
<b>Storage Stability :</b>	-15°C to -25°C/1 year(Do not lower than -25°C)

<b>Molecularweight :</b>	18kD
<b>Cell Pathway :</b>	Cell_Cycle_G1S;Cell_Cycle_G2M_DNA;
<b>Background :</b>	<p>The protein encoded by this gene is a member of the INK4 family of cyclin-dependent kinase inhibitors. This protein has been shown to form a stable complex with CDK4 or CDK6, and prevent the activation of the CDK kinases, thus function as a cell growth regulator that controls cell cycle G1 progression. The abundance of the transcript of this gene was found to oscillate in a cell-cycle dependent manner with the lowest expression at mid G1 and a maximal expression during S phase. The negative regulation of the cell cycle involved in this protein was shown to participate in repressing neuronal proliferation, as well as spermatogenesis. Two alternatively spliced variants of this gene, which encode an identical protein, have been reported. [provided by RefSeq, Jul 2008],</p>
<b>Function :</b>	<p>function:Interacts strongly with CDK4 and CDK6 and inhibits them.,similarity:Belongs to the CDKN2 cyclin-dependent kinase inhibitor family.,similarity:Contains 4 ANK repeats.,</p>
<b>Subcellular Location :</b>	Nucleus . Cytoplasm .
<b>Expression :</b>	Bone marrow,Muscle,Platelet,Thymus,
<b>Tag :</b>	orthogonal
<b>Sort :</b>	11370
<b>No4 :</b>	1
<b>Host :</b>	Rabbit
<b>Modifications :</b>	Unmodified

## Products Images



Immunohistochemistry analysis of paraffin-embedded human brain, using p19 INK4d Antibody. The picture on the right is blocked with the synthesized peptide.