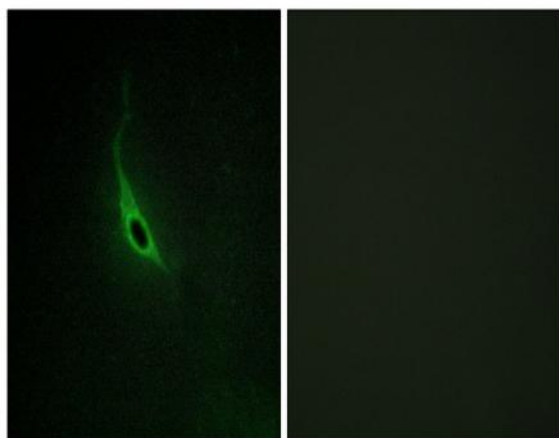


p164-RhoGEF Polyclonal Antibody

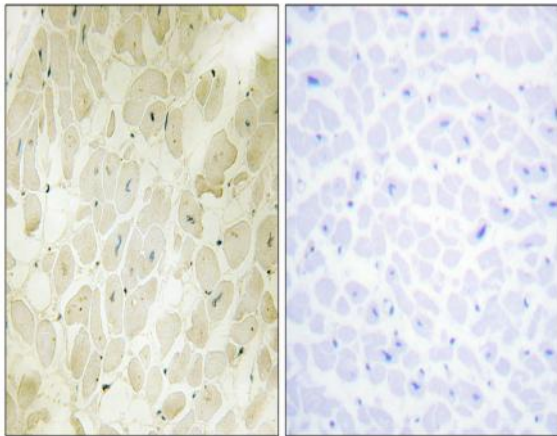
Catalog No :	YT3494
Reactivity :	Human;Mouse
Applications :	IHC;IF;ELISA
Target :	p164-RhoGEF
Gene Name :	ARHGEF17
Protein Name :	Rho guanine nucleotide exchange factor 17
Human Gene Id :	9828
Human Swiss Prot No :	Q96PE2
Mouse Gene Id :	207212
Mouse Swiss Prot No :	Q80U35
Immunogen :	The antiserum was produced against synthesized peptide derived from human ARHGEF17. AA range:431-480
Specificity :	p164-RhoGEF Polyclonal Antibody detects endogenous levels of p164-RhoGEF protein.
Formulation :	Liquid in PBS containing 50% glycerol, 0.5% BSA and 0.02% sodium azide.
Source :	Polyclonal, Rabbit,IgG
Dilution :	IHC 1:100 - 1:300. IF 1:200 - 1:1000. ELISA: 1:5000. Not yet tested in other applications.
Purification :	The antibody was affinity-purified from rabbit antiserum by affinity-chromatography using epitope-specific immunogen.
Concentration :	1 mg/ml

Storage Stability :	-15 °C to -25 °C/1 year(Do not lower than -25 °C)
Molecularweight :	222kD
Cell Pathway :	Regulation of Actin Dynamics; AMPK
Background :	function:Acts as guanine nucleotide exchange factor (GEF) for RhoA GTPases.,similarity:Contains 1 DH (DBL-homology) domain.,tissue specificity:Highly expressed in the heart.,
Function :	function:Acts as guanine nucleotide exchange factor (GEF) for RhoA GTPases.,similarity:Contains 1 DH (DBL-homology) domain.,tissue specificity:Highly expressed in the heart.,
Subcellular Location :	cytosol,
Expression :	Highly expressed in the heart.
Sort :	11368
No4 :	1
Host :	Rabbit
Modifications :	Unmodified

Products Images



Immunofluorescence analysis of HepG2 cells, using CARD6 Antibody diluted at 1:50. The picture on the right is blocked with the synthesized peptide.



Immunohistochemical analysis of paraffin-human heart. 1, Antibody was diluted at 1:200(4° overnight). 2, TRIS-EDTA of pH8.0 was used for antigen retrieval. 3,Secondary antibody was diluted at 1:200(room temperature, 30min). The picture on the right is blocked with the synthesized peptide.