

TF2LX Polyclonal Antibody

Catalog No :	YN0073
Reactivity :	Human;Rat;Mouse;
Applications :	WB;ELISA
Target :	TF2LX
Gene Name :	TGIF2LX TGIFLX
Protein Name :	Homeobox protein TGIF2LX (TGF-beta-induced transcription factor 2-like protein) (TGFB-induced factor 2-like protein, X-linked) (TGIF-like on the X)
Human Gene Id :	90316
Human Swiss Prot No :	Q8IUE1
Immunogen :	Synthesized peptide derived from part region of human protein
Specificity :	TF2LX Polyclonal Antibody detects endogenous levels of protein.
Formulation :	Liquid in PBS containing 50% glycerol, and 0.02% sodium azide.
Source :	Polyclonal, Rabbit,IgG
Dilution :	WB 1:500-2000 ELISA 1:5000-20000
Purification :	The antibody was affinity-purified from rabbit antiserum by affinity-chromatography using epitope-specific immunogen.
Concentration :	1 mg/ml
Storage Stability :	-15°C to -25°C/1 year(Do not lower than -25°C)
Observed Band :	26kD
Background :	This gene encodes a member of the TALE/TGIF homeobox family of transcription factors. Testis-specific expression suggests that this gene may play

a role in spermatogenesis. A homolog of this gene lies within the male specific region of chromosome Y, in a block of sequence that is thought to be the result of a large X-to-Y transposition. [provided by RefSeq, Jul 2008],

Function :

function:May have a transcription role in testis.,similarity:Belongs to the TALE/TGIF homeobox family.,similarity:Contains 1 homeobox DNA-binding domain.,tissue specificity:Specifically expressed in adult testis.,

Subcellular Location :

Nucleus .

Expression :

Specifically expressed in adult testis.

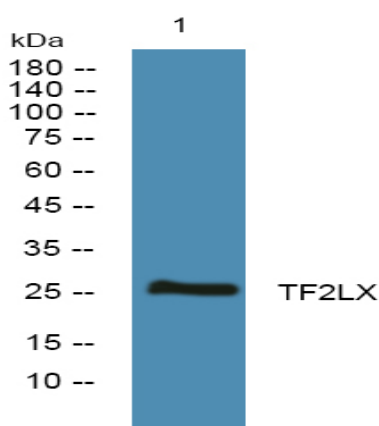
Sort :

22098

No4 :

1

Products Images



Western blot analysis of lysates from K562 cells, primary antibody was diluted at 1:1000, 4° over night