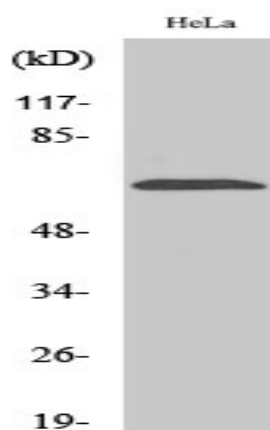


NEIL3 Polyclonal Antibody

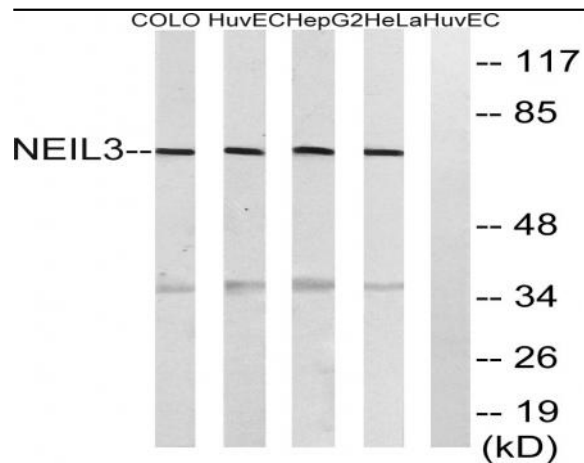
Catalog No :	YT3031
Reactivity :	Human;Mouse
Applications :	WB;IHC;IF;ELISA
Target :	NEIL3
Fields :	>>Base excision repair
Gene Name :	NEIL3
Protein Name :	Endonuclease 8-like 3
Human Gene Id :	55247
Human Swiss Prot No :	Q8TAT5
Mouse Gene Id :	234258
Mouse Swiss Prot No :	Q8K203
Immunogen :	The antiserum was produced against synthesized peptide derived from human NEIL3. AA range:491-540
Specificity :	NEIL3 Polyclonal Antibody detects endogenous levels of NEIL3 protein.
Formulation :	Liquid in PBS containing 50% glycerol, 0.5% BSA and 0.02% sodium azide.
Source :	Polyclonal, Rabbit,IgG
Dilution :	WB 1:500 - 1:2000. IHC 1:100 - 1:300. ELISA: 1:40000.. IF 1:50-200
Purification :	The antibody was affinity-purified from rabbit antiserum by affinity-chromatography using epitope-specific immunogen.
Concentration :	1 mg/ml

Storage Stability :	-15°C to -25°C/1 year(Do not lower than -25°C)
Observed Band :	35kD
Cell Pathway :	Base excision repair;
Background :	NEIL3 belongs to a class of DNA glycosylases homologous to the bacterial Fpg/Nei family. These glycosylases initiate the first step in base excision repair by cleaving bases damaged by reactive oxygen species and introducing a DNA strand break via the associated lyase reaction (Bandaru et al., 2002 [PubMed 12509226]).[supplied by OMIM, Mar 2008],
Function :	function:Reports about DNA glycosylase activity are contradictory. The protein lacks a proline residue at the N-terminus that is the active site residue found in the other members of the FPG family.,similarity:Belongs to the FPG family.,similarity:Contains 1 FPG-type zinc finger.,similarity:Contains 1 RanBP2-type zinc finger.,tissue specificity:Detected in thymus and testis.,
Subcellular Location :	Nucleus . Chromosome . Recruited to replication stress sites via interaction with ubiquitinated CMG helicase. .
Expression :	Expressed in keratinocytes and embryonic fibroblasts (at protein level). Also detected in thymus, testis and fetal lung primary fibroblasts.
Sort :	1430
No3 :	ab110049
No4 :	1

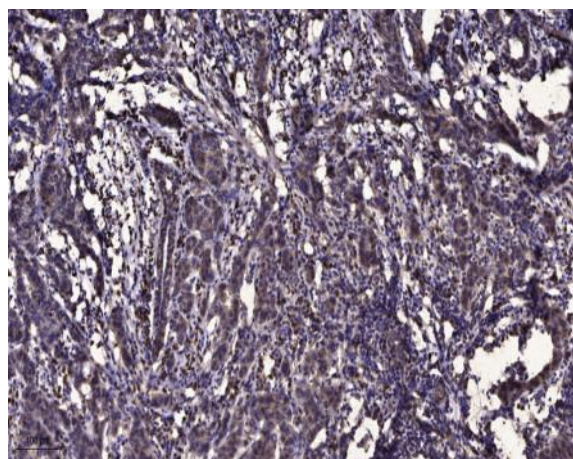
Products Images



Western Blot analysis of various cells using NEIL3 Polyclonal Antibody diluted at 1:2000 cells nucleus extracted by Minute TM Cytoplasmic and Nuclear Fractionation kit (SC-003, Invent biotech, MN, USA).



Western blot analysis of lysates from HeLa, HepG2, HUVEC, and COLO cells, using NEIL3 Antibody. The lane on the right is blocked with the synthesized peptide.



Immunohistochemical analysis of paraffin-embedded human Breast cancer. 1, Antibody was diluted at 1:200(4° overnight). 2, Tris-EDTA,pH9.0 was used for antigen retrieval. 3,Secondary antibody was diluted at 1:200(room temperature, 45min).