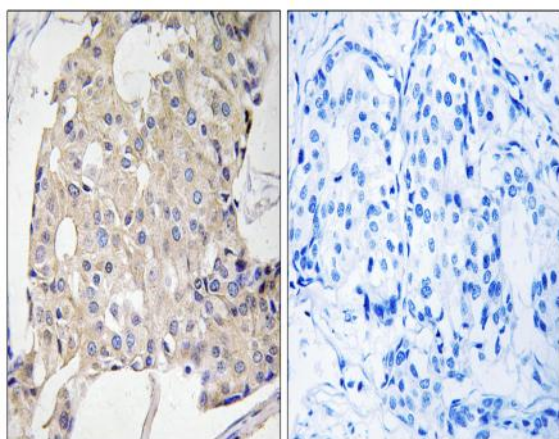


NDRG3 Polyclonal Antibody

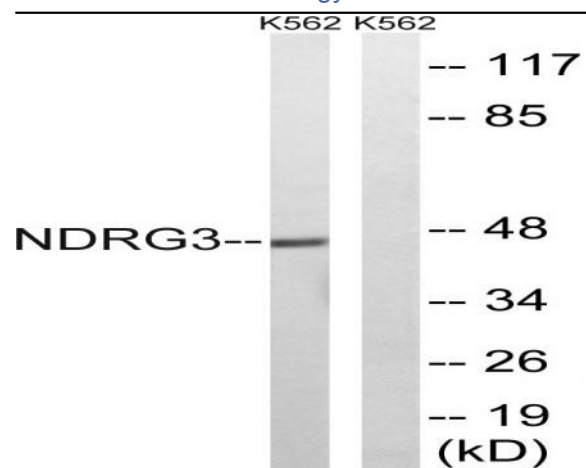
Catalog No :	YT3005
Reactivity :	Human;Mouse;Rat
Applications :	WB;IHC;IF;ELISA
Target :	NDRG3
Gene Name :	NDRG3
Protein Name :	Protein NDRG3
Human Gene Id :	57446
Human Swiss Prot No :	Q9UGV2
Mouse Gene Id :	29812
Mouse Swiss Prot No :	Q9QYF9
Rat Gene Id :	296318
Rat Swiss Prot No :	Q6AYR2
Immunogen :	The antiserum was produced against synthesized peptide derived from human NDRG3. AA range:206-255
Specificity :	NDRG3 Polyclonal Antibody detects endogenous levels of NDRG3 protein.
Formulation :	Liquid in PBS containing 50% glycerol, 0.5% BSA and 0.02% sodium azide.
Source :	Polyclonal, Rabbit,IgG
Dilution :	WB 1:500 - 1:2000. IHC 1:100 - 1:300. ELISA: 1:40000.. IF 1:50-200
Purification :	The antibody was affinity-purified from rabbit antiserum by affinity-chromatography using epitope-specific immunogen.

Concentration :	1 mg/ml
Storage Stability :	-15°C to -25°C/1 year(Do not lower than -25°C)
Observed Band :	45kD
Background :	similarity:Belongs to the NDRG family.,tissue specificity:Ubiquitous. Highly expressed in brain.,
Function :	similarity:Belongs to the NDRG family.,tissue specificity:Ubiquitous. Highly expressed in brain.,
Subcellular Location :	cytoplasm,extracellular exosome,
Expression :	Ubiquitous. Highly expressed in brain.
Sort :	10631
No4 :	1

Products Images



Immunohistochemistry analysis of paraffin-embedded human breast carcinoma tissue, using NDRG3 Antibody. The picture on the right is blocked with the synthesized peptide.



Western blot analysis of lysates from K562 cells, using NDRG3 Antibody. The lane on the right is blocked with the synthesized peptide.