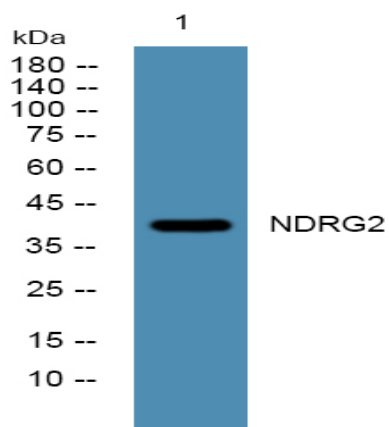


NDRG2 Polyclonal Antibody

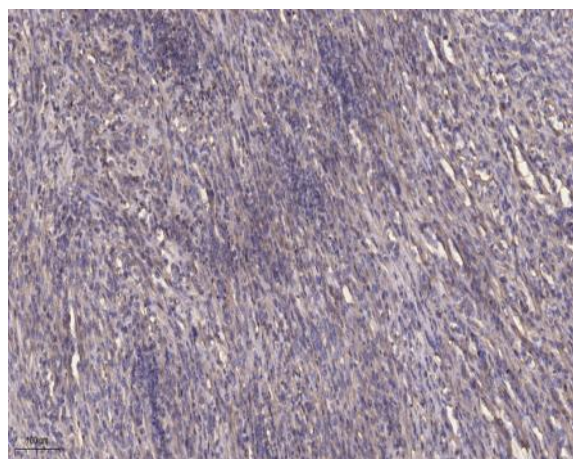
Catalog No :	YT3004
Reactivity :	Human;Mouse;Rat
Applications :	IHC;IF;WB;ELISA
Target :	NDRG2
Gene Name :	NDRG2
Protein Name :	Protein NDRG2
Human Gene Id :	57447
Human Swiss Prot No :	Q9UN36
Mouse Gene Id :	29811
Mouse Swiss Prot No :	Q9QYG0
Rat Gene Id :	171114
Rat Swiss Prot No :	Q8VBU2
Immunogen :	Synthesized peptide derived from NDRG2 . at AA range: 10-90
Specificity :	NDRG2 Polyclonal Antibody detects endogenous levels of NDRG2 protein.
Formulation :	Liquid in PBS containing 50% glycerol, 0.5% BSA and 0.02% sodium azide.
Source :	Polyclonal, Rabbit,IgG
Dilution :	WB 1:500-2000 IHC 1:100 - 1:300. ELISA: 1:40000.. IF 1:50-200
Purification :	The antibody was affinity-purified from rabbit antiserum by affinity-chromatography using epitope-specific immunogen.

Concentration :	1 mg/ml
Storage Stability :	-15°C to -25°C/1 year(Do not lower than -25°C)
Observed Band :	40kD
Background :	This gene is a member of the N-myc downregulated gene family which belongs to the alpha/beta hydrolase superfamily. The protein encoded by this gene is a cytoplasmic protein that may play a role in neurite outgrowth. This gene may be involved in glioblastoma carcinogenesis. Several alternatively spliced transcript variants of this gene have been described, but the full-length nature of some of these variants has not been determined. [provided by RefSeq, Jul 2008],
Function :	developmental stage:Specifically expressed during dendritic cell differentiation (in vitro). Expression is low in fetal brain and increases during brain postnatal development.,disease:Found in pathological brain lesions of Alzheimer disease.,disease:Not expressed or strongly down-regulated in various cancer types, such as astrocytoma, meningioma, liver cancer and pancreatic cancer.,function:May be involved in dendritic cell and neuron differentiation. May have anti-tumor activity.,similarity:Belongs to the NDRG family.,subcellular location:Perinuclear in neurons.,tissue specificity:Highly expressed in brain, heart, skeletal muscle and salivary gland, and moderately in kidney and liver. Expressed in dendritic cells, but not in other blood cells. Generally not expressed in tumor cell lines. Isoforms 1 and 2 are present in brain neurons and up-regulated in Alzheimer disease (at protein leve
Subcellular Location :	Cytoplasm. Cytoplasm, perinuclear region. Cell projection, growth cone . In neurons, seems to concentrate at axonal growth cone. Perinuclear in neurons (By similarity). .
Expression :	Highly expressed in brain, heart, skeletal muscle and salivary gland, and moderately in kidney and liver. Expressed in dendritic cells, but not in other blood cells. Expression levels are low in pancreatic and liver cancer tissues; absent in meningioma. Expressed in low-grade gliomas but present at low levels in glioblastoma. Isoform 1 and isoform 2 are present in brain neurons and up-regulated in Alzheimer disease (at protein level).
Tag :	orthogonal
Sort :	1092
No4 :	1

Products Images



Western blot analysis of lysates from U2OS cells, primary antibody was diluted at 1:1000, 4° over night



Immunohistochemical analysis of paraffin-embedded human Colon cancer. 1, Antibody was diluted at 1:200(4° overnight). 2, Tris-EDTA,pH9.0 was used for antigen retrieval. 3,Secondary antibody was diluted at 1:200(room temperature, 45min).