

## NPY1-R Polyclonal Antibody

<b>Catalog No :</b>	YT3183
<b>Reactivity :</b>	Human;Mouse;Rat
<b>Applications :</b>	WB;IF;ELISA
<b>Target :</b>	NPY1-R
<b>Fields :</b>	>>cAMP signaling pathway;>>Neuroactive ligand-receptor interaction;>>Regulation of lipolysis in adipocytes
<b>Gene Name :</b>	NPY1R
<b>Protein Name :</b>	Neuropeptide Y receptor type 1
<b>Human Gene Id :</b>	4886
<b>Human Swiss Prot No :</b>	P25929
<b>Mouse Gene Id :</b>	18166
<b>Mouse Swiss Prot No :</b>	Q04573
<b>Rat Swiss Prot No :</b>	P21555
<b>Immunogen :</b>	The antiserum was produced against synthesized peptide derived from human NPY1R. AA range:221-270
<b>Specificity :</b>	NPY1-R Polyclonal Antibody detects endogenous levels of NPY1-R protein.
<b>Formulation :</b>	Liquid in PBS containing 50% glycerol, 0.5% BSA and 0.02% sodium azide.
<b>Source :</b>	Polyclonal, Rabbit,IgG
<b>Dilution :</b>	WB 1:500 - 1:2000. IF 1:200 - 1:1000. ELISA: 1:5000. Not yet tested in other applications.
<b>Purification :</b>	The antibody was affinity-purified from rabbit antiserum by affinity-

chromatography using epitope-specific immunogen.

**Concentration :** 1 mg/ml

**Storage Stability :** -15°C to -25°C/1 year (Do not lower than -25°C)

**Observed Band :** 48kD

**Cell Pathway :** Neuroactive ligand-receptor interaction;

**Background :** This gene belongs to the G-protein-coupled receptor superfamily. The encoded transmembrane protein mediates the function of neuropeptide Y (NPY), a neurotransmitter, and peptide YY (PYY), a gastrointestinal hormone. The encoded receptor undergoes fast agonist-induced internalization through clathrin-coated pits and is subsequently recycled back to the cell membrane. Activation of Y1 receptors may result in mobilization of intracellular calcium and inhibition of adenylate cyclase activity. [provided by RefSeq, Aug 2013],

**Function :** function:Receptor for neuropeptide Y and peptide YY. The rank order of affinity of this receptor for pancreatic polypeptides is NPY > [Pro-34] PYY, PYY and [Leu-31, Pro-34] NPY > NPY (2-36) > [Ile-31, Gln-34] PP and PYY (3-36) > PP > NPY free acid., similarity:Belongs to the G-protein coupled receptor 1 family.,

**Subcellular Location :** Cell membrane; Multi-pass membrane protein.

**Expression :** Blood, Brain, Pancreas, Testis,

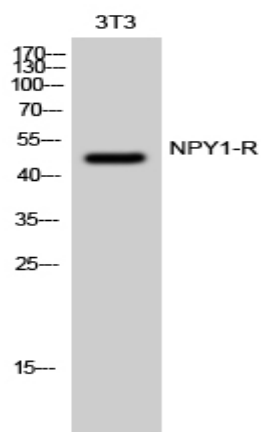
**Sort :** 10958

**No4 :** 1

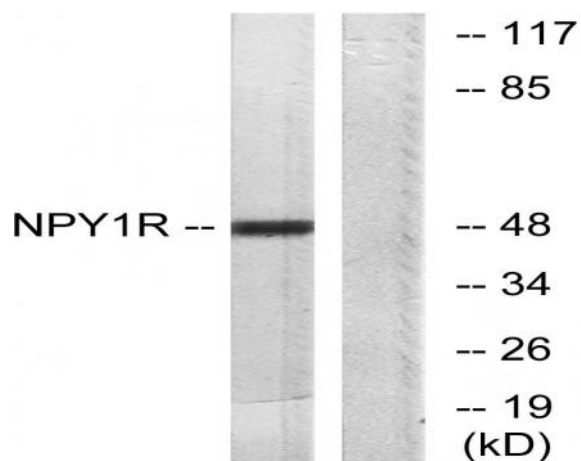
**Host :** Rabbit

**Modifications :** Unmodified

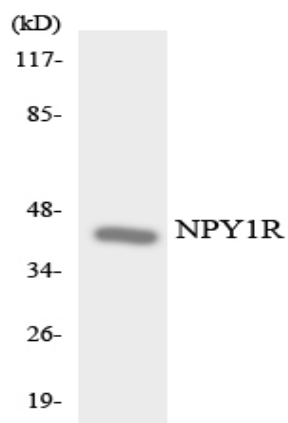
**Products Images**



Western Blot analysis of 3T3 cells using NPY1-R Polyclonal Antibody



Western blot analysis of lysates from NIH/3T3 cells, using NPY1R Antibody. The lane on the right is blocked with the synthesized peptide.



Western blot analysis of the lysates from 293 cells using NPY1R antibody.