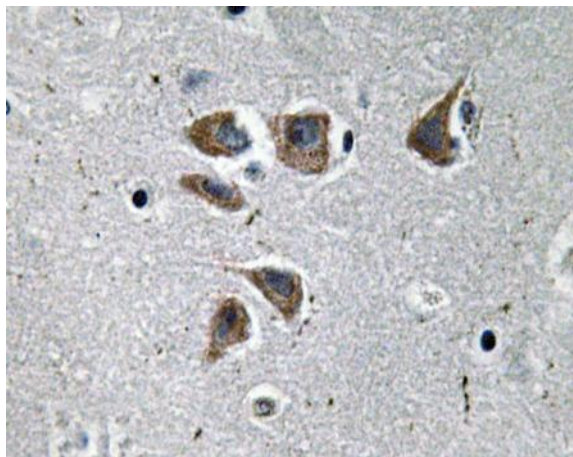


NPY Polyclonal Antibody

Catalog No :	YT3182
Reactivity :	Human;Mouse;Rat
Applications :	WB;IHC;IF;ELISA
Target :	NPY
Fields :	>>cAMP signaling pathway;>>Neuroactive ligand-receptor interaction;>>Adipocytokine signaling pathway;>>Regulation of lipolysis in adipocytes;>>Alcoholism
Gene Name :	NPY
Protein Name :	Pro-neuropeptide Y
Human Gene Id :	4852
Human Swiss Prot No :	P01303
Mouse Gene Id :	109648
Mouse Swiss Prot No :	P57774
Rat Gene Id :	1.00912e+008
Rat Swiss Prot No :	P07808
Immunogen :	The antiserum was produced against synthesized peptide derived from human NPY. AA range:45-94
Specificity :	NPY Polyclonal Antibody detects endogenous levels of NPY protein.
Formulation :	Liquid in PBS containing 50% glycerol, 0.5% BSA and 0.02% sodium azide.
Source :	Polyclonal, Rabbit,IgG
Dilution :	IHC 1:100-500, WB 1:500-2000, ELISA 1:5000-20000. IF 1:50-200

Purification :	The antibody was affinity-purified from rabbit antiserum by affinity-chromatography using epitope-specific immunogen.
Concentration :	1 mg/ml
Storage Stability :	-15°C to -25°C/1 year(Do not lower than -25°C)
Molecularweight :	11kD
Cell Pathway :	Adipocytokine;
Background :	This gene encodes a neuropeptide that is widely expressed in the central nervous system and influences many physiological processes, including cortical excitability, stress response, food intake, circadian rhythms, and cardiovascular function. The neuropeptide functions through G protein-coupled receptors to inhibit adenylyl cyclase, activate mitogen-activated protein kinase (MAPK), regulate intracellular calcium levels, and activate potassium channels. A polymorphism in this gene resulting in a change of leucine 7 to proline in the signal peptide is associated with elevated cholesterol levels, higher alcohol consumption, and may be a risk factor for various metabolic and cardiovascular diseases. The protein also exhibits antimicrobial activity against bacteria and fungi. [provided by RefSeq, Oct 2014],
Function :	function:NPY is implicated in the control of feeding and in secretion of gonadotrophin-release hormone.,online information:Neuropeptide Y entry,similarity:Belongs to the NPY family.,tissue specificity:One of the most abundant peptides in the nervous system. Also found in some chromaffin cells of the adrenal medulla.,
Subcellular Location :	Secreted. Cytoplasmic vesicle, secretory vesicle, neuronal dense core vesicle .
Expression :	One of the most abundant peptides in the nervous system. Also found in some chromaffin cells of the adrenal medulla.
Tag :	orthogonal
Sort :	10957
No4 :	1
Host :	Rabbit
Modifications :	Unmodified

Products Images



Immunohistochemistry analysis of NPY antibody in paraffin-embedded human brain tissue.