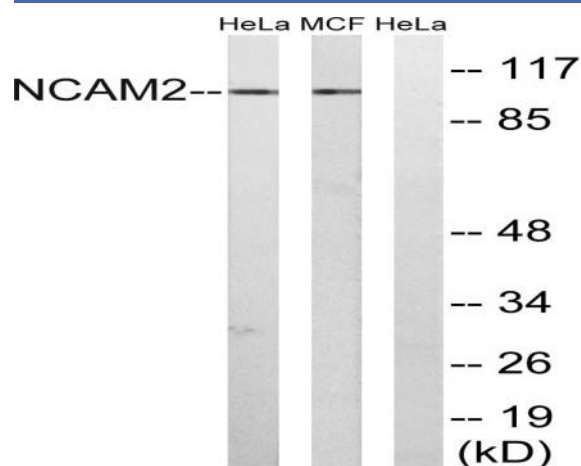


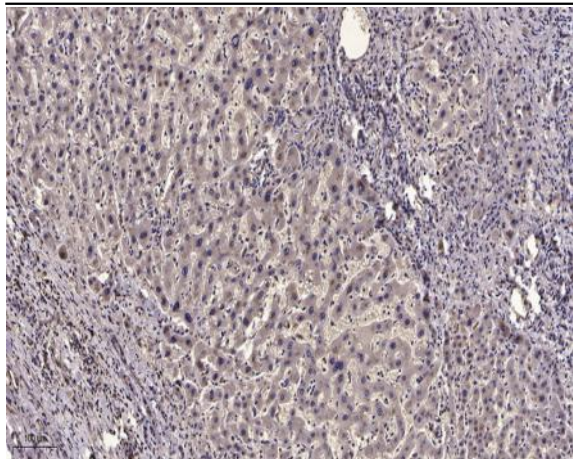
## NCAM2 Polyclonal Antibody

<b>Catalog No :</b>	YT2989
<b>Reactivity :</b>	Human;Mouse;Rat
<b>Applications :</b>	WB;IHC
<b>Target :</b>	NCAM2
<b>Fields :</b>	>>Cell adhesion molecules;>>Prion disease
<b>Gene Name :</b>	NCAM2
<b>Protein Name :</b>	Neural cell adhesion molecule 2
<b>Human Gene Id :</b>	4685
<b>Human Swiss Prot No :</b>	O15394
<b>Mouse Gene Id :</b>	17968
<b>Mouse Swiss Prot No :</b>	O35136
<b>Immunogen :</b>	The antiserum was produced against synthesized peptide derived from human NCAM2. AA range:264-313
<b>Specificity :</b>	NCAM2 Polyclonal Antibody detects endogenous levels of NCAM2 protein.
<b>Formulation :</b>	Liquid in PBS containing 50% glycerol, 0.5% BSA and 0.02% sodium azide.
<b>Source :</b>	Polyclonal, Rabbit,IgG
<b>Dilution :</b>	WB 1:500-2000;IHC 1:50-300
<b>Purification :</b>	The antibody was affinity-purified from rabbit antiserum by affinity-chromatography using epitope-specific immunogen.
<b>Concentration :</b>	1 mg/ml

<b>Storage Stability :</b>	-15°C to -25°C/1 year(Do not lower than -25°C)
<b>Observed Band :</b>	100kD
<b>Cell Pathway :</b>	Cell adhesion molecules (CAMs);Prion diseases;
<b>Background :</b>	The protein encoded by this gene belongs to the immunoglobulin superfamily. It is a type I membrane protein and may function in selective fasciculation and zone-to-zone projection of the primary olfactory axons. [provided by RefSeq, Jul 2008],
<b>Function :</b>	function:May play important roles in selective fasciculation and zone-to-zone projection of the primary olfactory axons.,similarity:Contains 2 fibronectin type-III domains.,similarity:Contains 5 Ig-like C2-type (immunoglobulin-like) domains.,tissue specificity:Expressed most strongly in adult and fetal brain.,
<b>Subcellular Location :</b>	Cell membrane; Single-pass type I membrane protein.
<b>Expression :</b>	Expressed most strongly in adult and fetal brain.
<b>Sort :</b>	10600
<b>No4 :</b>	1

## Products Images





Immunohistochemical analysis of paraffin-embedded human liver cancer. 1, Antibody was diluted at 1:200(4° overnight). 2, Tris-EDTA,pH9.0 was used for antigen retrieval. 3,Secondary antibody was diluted at 1:200(room temperature, 45min).