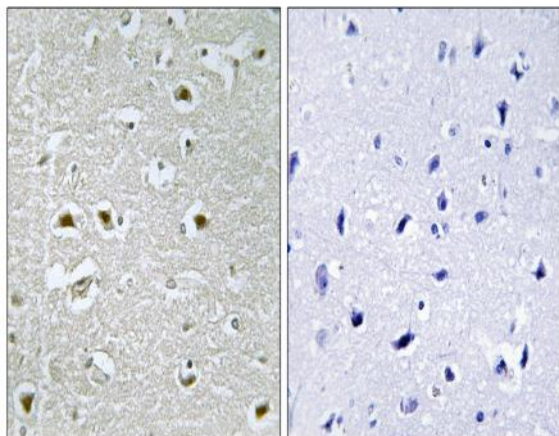


NPA1 Polyclonal Antibody

Catalog No :	YT3178
Reactivity :	Human;Rat;Mouse;
Applications :	IHC;IF;ELISA
Target :	NPA1
Gene Name :	URB1
Protein Name :	Nucleolar pre-ribosomal-associated protein 1
Human Gene Id :	9875
Human Swiss Prot No :	O60287
Mouse Swiss Prot No :	Q571H0
Immunogen :	The antiserum was produced against synthesized peptide derived from human URB1. AA range:2013-2062
Specificity :	NPA1 Polyclonal Antibody detects endogenous levels of NPA1 protein.
Formulation :	Liquid in PBS containing 50% glycerol, 0.5% BSA and 0.02% sodium azide.
Source :	Polyclonal, Rabbit,IgG
Dilution :	IHC 1:100 - 1:300. ELISA: 1:40000.. IF 1:50-200
Purification :	The antibody was affinity-purified from rabbit antiserum by affinity-chromatography using epitope-specific immunogen.
Concentration :	1 mg/ml
Storage Stability :	-15°C to -25°C/1 year(Do not lower than -25°C)
Molecularweight :	254kD

Background :	URB1, also named as C21orf108, KIAA0539 and NPA1, is a 2271 amino acid protein that is homologous to the <i>S. cerevisiae</i> protein URB1 which is a nucleolar protein involved in the normal accumulation of 25S and 5. S rRNAs and may also play a role in the biosynthesis of the 60S ribosomal unit. Also localized to the nucleolus, human URB1 is thought to have the same functions as <i>S. cerevisiae</i> URB1. The antibody is specific to URB1.
Subcellular Location :	Nucleus, nucleolus .
Expression :	Brain,Epithelium,Placenta,T-cell,
Sort :	10939
No4 :	1
Host :	Rabbit
Modifications :	Unmodified

Products Images



Immunohistochemistry analysis of paraffin-embedded human brain, using URB1 Antibody. The picture on the right is blocked with the synthesized peptide.