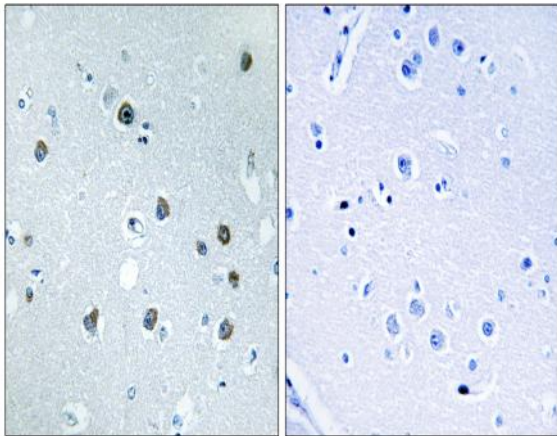


Myosin Id Polyclonal Antibody

Catalog No :	YT2948
Reactivity :	Human;Mouse;Rat
Applications :	IHC;IF;ELISA
Target :	Myosin Id
Fields :	>>Pathogenic Escherichia coli infection
Gene Name :	MYO1D
Protein Name :	Unconventional myosin-Id
Human Gene Id :	4642
Human Swiss Prot No :	O94832
Mouse Gene Id :	338367
Mouse Swiss Prot No :	Q5SYD0
Rat Gene Id :	25485
Rat Swiss Prot No :	Q63357
Immunogen :	The antiserum was produced against synthesized peptide derived from human MYO1D. AA range:825-874
Specificity :	Myosin Id Polyclonal Antibody detects endogenous levels of Myosin Id protein.
Formulation :	Liquid in PBS containing 50% glycerol, 0.5% BSA and 0.02% sodium azide.
Source :	Polyclonal, Rabbit,IgG
Dilution :	IHC 1:100 - 1:300. ELISA: 1:40000.. IF 1:50-200

Purification :	The antibody was affinity-purified from rabbit antiserum by affinity-chromatography using epitope-specific immunogen.
Concentration :	1 mg/ml
Storage Stability :	-15°C to -25°C/1 year(Do not lower than -25°C)
Molecularweight :	116kD
Background :	function:Myosins are actin-based motor molecules with ATPase activity. Unconventional myosins serve in intracellular movements. Their highly divergent tails are presumed to bind to membranous compartments, which would be moved relative to actin filaments.,similarity:Contains 1 myosin head-like domain.,similarity:Contains 2 IQ domains.,subunit:Binds calmodulin through its IQ motifs.,tissue specificity:Expressed in many tissues. Highest levels in brain, followed by lung and ovary; expression is lowest in spleen.,
Function :	function:Myosins are actin-based motor molecules with ATPase activity. Unconventional myosins serve in intracellular movements. Their highly divergent tails are presumed to bind to membranous compartments, which would be moved relative to actin filaments.,similarity:Contains 1 myosin head-like domain.,similarity:Contains 2 IQ domains.,subunit:Binds calmodulin through its IQ motifs.,tissue specificity:Expressed in many tissues. Highest levels in brain, followed by lung and ovary; expression is lowest in spleen.,
Subcellular Location :	Cytoplasm . Perikaryon . Cell projection, dendrite . Early endosome . Cytoplasm, cell cortex . Colocalizes with the actin cytoskeleton in the cell cortex close to the apical cell membrane. Colocalizes with cytoplasmic puncta that are reminiscent of transport vesicles. .
Expression :	Expressed in many tissues. Highest levels in brain, followed by lung and ovary; expression is lowest in spleen.
Sort :	10505
No4 :	1

Products Images



Immunohistochemistry analysis of paraffin-embedded human brain tissue, using MYO1D Antibody. The picture on the right is blocked with the synthesized peptide.