

## NKIAMRE Polyclonal Antibody

<b>Catalog No :</b>	YT3134
<b>Reactivity :</b>	Human;Rat;Mouse;
<b>Applications :</b>	IHC;IF;WB;ELISA
<b>Target :</b>	NKIAMRE
<b>Gene Name :</b>	CDKL3
<b>Protein Name :</b>	Cyclin-dependent kinase-like 3
<b>Human Gene Id :</b>	51265
<b>Human Swiss Prot No :</b>	Q8IVW4
<b>Mouse Swiss Prot No :</b>	Q8BLF2
<b>Immunogen :</b>	The antiserum was produced against synthesized peptide derived from human CDKL3. AA range:291-340
<b>Specificity :</b>	NKIAMRE Polyclonal Antibody detects endogenous levels of NKIAMRE protein.
<b>Formulation :</b>	Liquid in PBS containing 50% glycerol, 0.5% BSA and 0.02% sodium azide.
<b>Source :</b>	Polyclonal, Rabbit,IgG
<b>Dilution :</b>	WB 1:500-2000 IHC 1:100 - 1:300. ELISA: 1:5000.. IF 1:50-200
<b>Purification :</b>	The antibody was affinity-purified from rabbit antiserum by affinity-chromatography using epitope-specific immunogen.
<b>Concentration :</b>	1 mg/ml
<b>Storage Stability :</b>	-15°C to -25°C/1 year(Do not lower than -25°C)
<b>Observed Band :</b>	67kD

**Background :** The protein encoded by this gene is a member of cyclin-dependent protein kinase (CDK) family. CDK family members are highly similar to the gene products of *Saccharomyces cerevisiae* cdc28, and *Schizosaccharomyces pombe* cdc2, and are known to be important regulators of cell cycle progression. This gene was identified as a gene absent in leukemic patients with chromosome 5q deletion. This loss may be an important determinant of dysmyelopoiesis. Alternative splicing results in multiple transcript variants encoding different isoforms. [provided by RefSeq, Jul 2008],

**Function :** catalytic activity:ATP + a protein = ADP + a phosphoprotein.,domain:The [NKR]KIAxRE motif seems to be a cyclin-binding region.,similarity:Belongs to the protein kinase superfamily. CMGC Ser/Thr protein kinase family. CDC2/CDKX subfamily.,similarity:Contains 1 protein kinase domain.,

**Subcellular Location :** Cytoplasm .

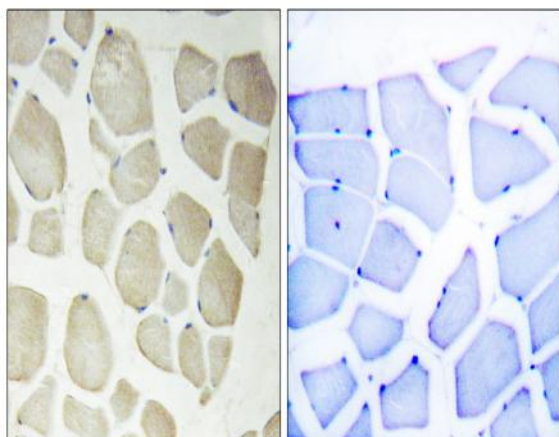
**Expression :** Fetal heart,Testis,

**Sort :** 10865

**Host :** Rabbit

**Modifications :** Unmodified

## Products Images



Immunohistochemistry analysis of paraffin-embedded human skeletal muscle, using CDKL3 Antibody. The picture on the right is blocked with the synthesized peptide.