

Musculin Polyclonal Antibody

Catalog No :	YT2923
Reactivity :	Human;Mouse
Applications :	WB;IHC;IF;ELISA
Target :	Musculin
Gene Name :	MSC
Protein Name :	Musculin
Human Gene Id :	9242
Human Swiss Prot No :	O60682
Mouse Gene Id :	17681
Mouse Swiss Prot No :	O88940
Immunogen :	The antiserum was produced against synthesized peptide derived from human Musculin. AA range:131-180
Specificity :	Musculin Polyclonal Antibody detects endogenous levels of Musculin protein.
Formulation :	Liquid in PBS containing 50% glycerol, 0.5% BSA and 0.02% sodium azide.
Source :	Polyclonal, Rabbit,IgG
Dilution :	WB 1:500 - 1:2000. IHC 1:100 - 1:300. ELISA: 1:10000.. IF 1:50-200
Purification :	The antibody was affinity-purified from rabbit antiserum by affinity-chromatography using epitope-specific immunogen.
Concentration :	1 mg/ml
Storage Stability :	-15°C to -25°C/1 year(Do not lower than -25°C)

Observed Band : 22kD

Background : The protein encoded by this gene is a transcriptional repressor capable of binding an E-box element either as a homodimer or as a heterodimer with E2A in vitro. The encoded protein also forms heterodimers with E2A proteins in vivo. This protein is capable of inhibiting the transactivation capability of E47, an E2A protein, in mammalian cells. This gene is a downstream target of the B-cell receptor signal transduction pathway. [provided by RefSeq, Jul 2008],

Function : function:Transcription repressor capable of inhibiting the transactivation capability of TCF3/E47. May play a role in regulating antigen-dependent B-cell differentiation.,similarity:Contains 1 basic helix-loop-helix (bHLH) domain.,subunit:Efficient DNA binding requires dimerization with another bHLH protein. Binds DNA as a homodimer or a heterodimer. Forms a heterodimer with TCF3.,tissue specificity:Expressed in lymphoid tissues, B-cell lines and activated B-cells.,

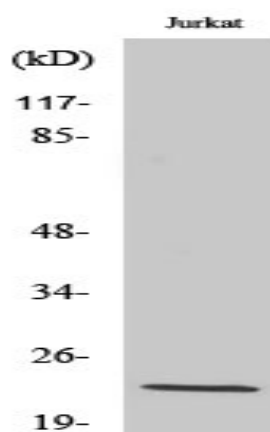
Subcellular Location : Nucleus.

Expression : Expressed in lymphoid tissues, B-cell lines and activated B-cells.

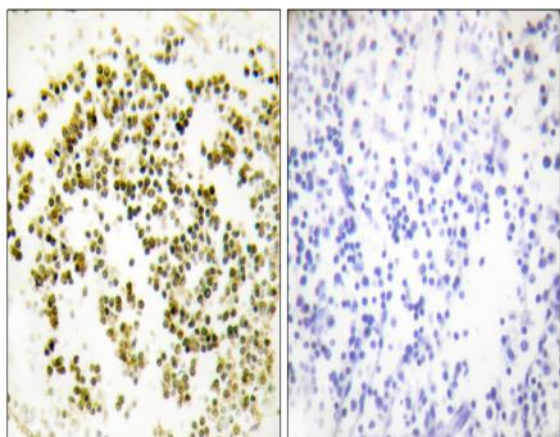
Sort : 10403

No4 : 1

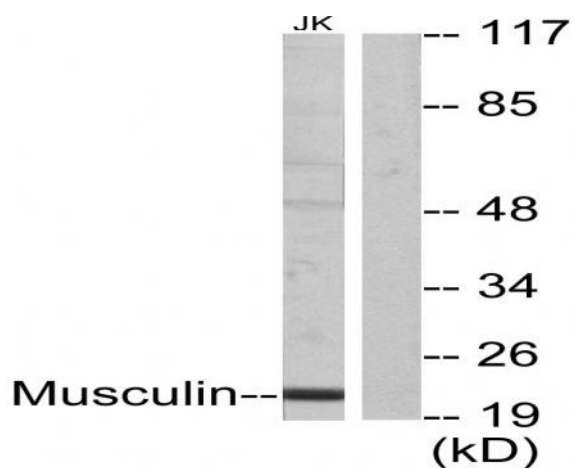
Products Images



Western Blot analysis of various cells using Musculin Polyclonal Antibody diluted at 1:2000 cells nucleus extracted by Minute TM Cytoplasmic and Nuclear Fractionation kit (SC-003, Inventbiotech, MN, USA).



Immunohistochemistry analysis of paraffin-embedded human lymph node tissue, using Musculin Antibody. The picture on the right is blocked with the synthesized peptide.



Western blot analysis of lysates from Jurkat cells, using Musculin Antibody. The lane on the right is blocked with the synthesized peptide.