

MRP-L54 Polyclonal Antibody

Catalog No :	YT2872
Reactivity :	Human;Mouse
Applications :	WB;IHC;IF;ELISA
Target :	MRP-L54
Gene Name :	MRPL54
Protein Name :	39S ribosomal protein L54 mitochondrial
Human Gene Id :	116541
Human Swiss Prot No :	Q6P161
Mouse Gene Id :	66047
Mouse Swiss Prot No :	Q9CPW3
Immunogen :	The antiserum was produced against synthesized peptide derived from human MRPL54. AA range:81-130
Specificity :	MRP-L54 Polyclonal Antibody detects endogenous levels of MRP-L54 protein.
Formulation :	Liquid in PBS containing 50% glycerol, 0.5% BSA and 0.02% sodium azide.
Source :	Polyclonal, Rabbit,IgG
Dilution :	WB 1:500 - 1:2000. IHC 1:100 - 1:300. ELISA: 1:40000.. IF 1:50-200
Purification :	The antibody was affinity-purified from rabbit antiserum by affinity-chromatography using epitope-specific immunogen.
Concentration :	1 mg/ml
Storage Stability :	-15°C to -25°C/1 year(Do not lower than -25°C)

Observed Band : 20kD

Background : Mammalian mitochondrial ribosomal proteins are encoded by nuclear genes and help in protein synthesis within the mitochondrion. Mitochondrial ribosomes (mitoribosomes) consist of a small 28S subunit and a large 39S subunit. They have an estimated 75% protein to rRNA composition compared to prokaryotic ribosomes, where this ratio is reversed. Another difference between mammalian mitoribosomes and prokaryotic ribosomes is that the latter contain a 5S rRNA. Among different species, the proteins comprising the mitoribosome differ greatly in sequence, and sometimes in biochemical properties, which prevents easy recognition by sequence homology. This gene encodes a 39S subunit protein. [provided by RefSeq, Jul 2008],

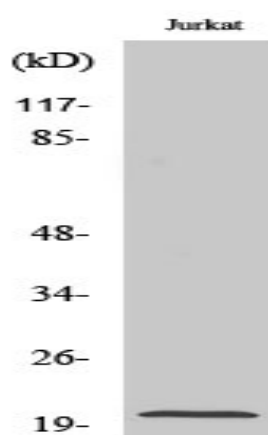
Subcellular Location : Mitochondrion .

Expression : Skin,

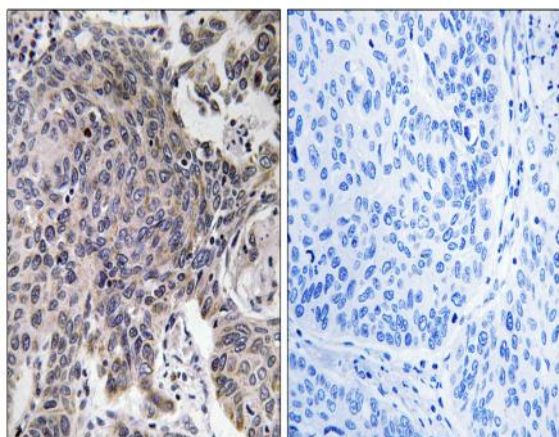
Sort : 10252

No4 : 1

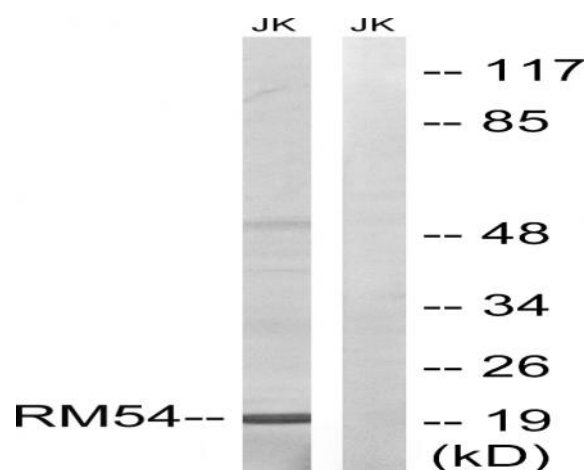
Products Images



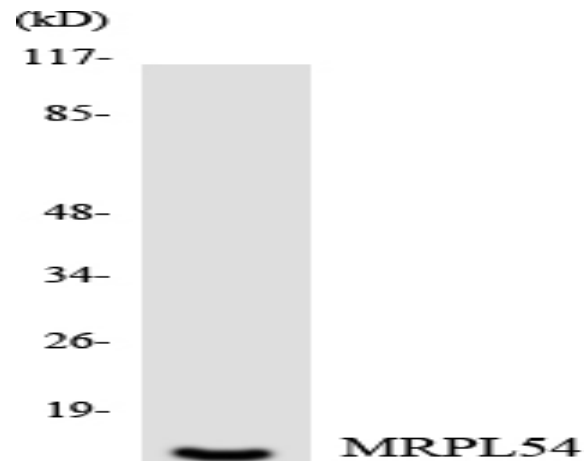
Western Blot analysis of various cells using MRP-L54 Polyclonal Antibody diluted at 1:2000



Immunohistochemistry analysis of paraffin-embedded human lung carcinoma tissue, using MRPL54 Antibody. The picture on the right is blocked with the synthesized peptide.



Western blot analysis of lysates from Jurkat cells, using MRPL54 Antibody. The lane on the right is blocked with the synthesized peptide.



Western blot analysis of the lysates from HT-29 cells using MRPL54 antibody.