

MRP-L17 Polyclonal Antibody

Catalog No :	YT2850
Reactivity :	Human;Rat;Mouse;
Applications :	IHC;IF;ELISA
Target :	MRP-L17
Fields :	>>Ribosome
Gene Name :	MRPL17
Protein Name :	39S ribosomal protein L17 mitochondrial
Human Gene Id :	63875
Human Swiss Prot No :	Q9NRX2
Mouse Swiss Prot No :	Q9D8P4
Immunogen :	Synthesized peptide derived from MRP-L17 . at AA range: 100-180
Specificity :	MRP-L17 Polyclonal Antibody detects endogenous levels of MRP-L17 protein.
Formulation :	Liquid in PBS containing 50% glycerol, 0.5% BSA and 0.02% sodium azide.
Source :	Polyclonal, Rabbit,IgG
Dilution :	IHC 1:100 - 1:300. ELISA: 1:20000.. IF 1:50-200
Purification :	The antibody was affinity-purified from rabbit antiserum by affinity-chromatography using epitope-specific immunogen.
Concentration :	1 mg/ml
Storage Stability :	-15°C to -25°C/1 year(Do not lower than -25°C)

Observed Band : 20kD

Background : Mammalian mitochondrial ribosomal proteins are encoded by nuclear genes and help in protein synthesis within the mitochondrion. Mitochondrial ribosomes (mitoribosomes) consist of a small 28S subunit and a large 39S subunit. They have an estimated 75% protein to rRNA composition compared to prokaryotic ribosomes, where this ratio is reversed. Another difference between mammalian mitoribosomes and prokaryotic ribosomes is that the latter contain a 5S rRNA. Among different species, the proteins comprising the mitoribosome differ greatly in sequence, and sometimes in biochemical properties, which prevents easy recognition by sequence homology. This gene encodes a 39S subunit protein. [provided by RefSeq, Jul 2008],

Function : similarity:Belongs to the ribosomal protein L17P family.,tissue specificity:Detected in adrenal gland, mammary gland and adipose tissue.,

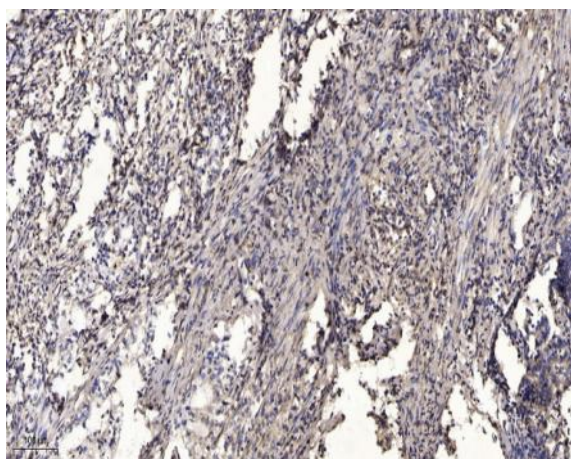
Subcellular Location : Mitochondrion .

Expression : Detected in adrenal gland, mammary gland and adipose tissue.

Sort : 10229

No4 : 1

Products Images



Immunohistochemical analysis of paraffin-embedded human Gastric adenocarcinoma. 1, Antibody was diluted at 1:200(4° overnight). 2, Tris-EDTA,pH9.0 was used for antigen retrieval. 3,Secondary antibody was diluted at 1:200(room temperature, 45min).