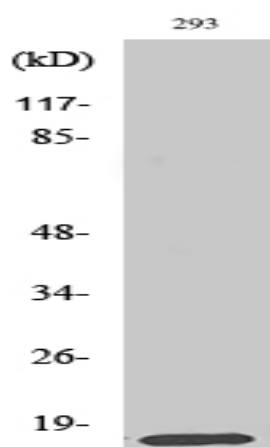


MRP-L14 Polyclonal Antibody

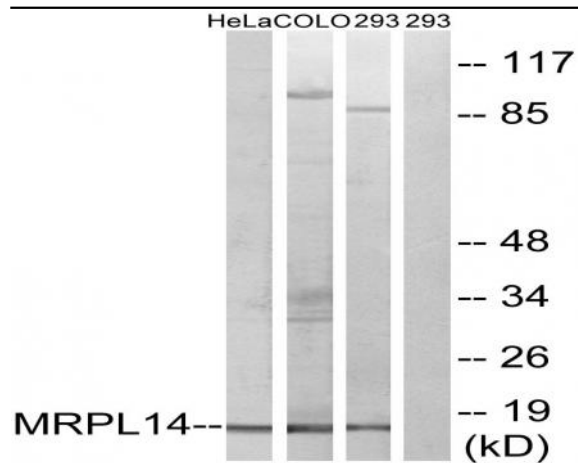
Catalog No :	YT2847
Reactivity :	Human;Mouse;Rat
Applications :	WB;IHC;IF;ELISA
Target :	MRP-L14
Fields :	>>Ribosome
Gene Name :	MRPL14
Protein Name :	39S ribosomal protein L14 mitochondrial
Human Gene Id :	64928
Human Swiss Prot No :	Q6P1L8
Mouse Gene Id :	68463
Mouse Swiss Prot No :	Q9D1I6
Rat Gene Id :	301250
Rat Swiss Prot No :	Q7M0E7
Immunogen :	The antiserum was produced against synthesized peptide derived from human MRPL14. AA range:96-145
Specificity :	MRP-L14 Polyclonal Antibody detects endogenous levels of MRP-L14 protein.
Formulation :	Liquid in PBS containing 50% glycerol, 0.5% BSA and 0.02% sodium azide.
Source :	Polyclonal, Rabbit,IgG
Dilution :	WB 1:500 - 1:2000. IHC 1:100 - 1:300. ELISA: 1:20000.. IF 1:50-200

Purification :	The antibody was affinity-purified from rabbit antiserum by affinity-chromatography using epitope-specific immunogen.
Concentration :	1 mg/ml
Storage Stability :	-15°C to -25°C/1 year(Do not lower than -25°C)
Observed Band :	16kD
Background :	This nuclear gene encodes a protein component of the 39S subunit of the mitochondrial ribosome. A pseudogene of this gene is found on chromosome 17. [provided by RefSeq, Jan 2016],
Function :	similarity:Belongs to the ribosomal protein L14P family.,
Subcellular Location :	Mitochondrion .
Expression :	Pancreas,
Sort :	10226
No4 :	1

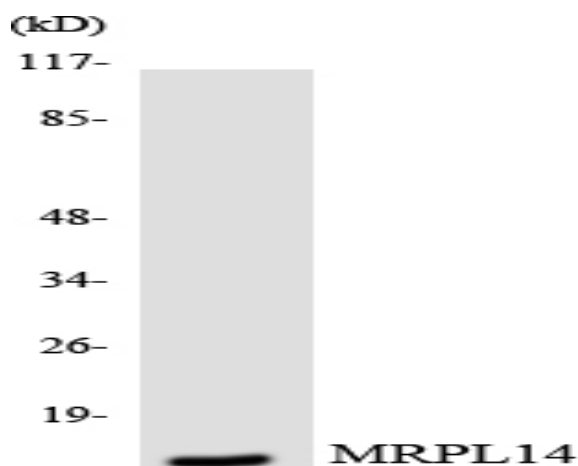
Products Images



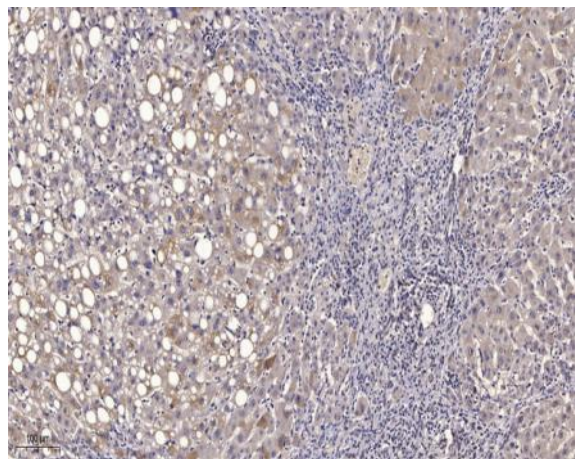
Western Blot analysis of various cells using MRP-L14 Polyclonal Antibody diluted at 1:2000



Western blot analysis of lysates from 293, HeLa, and COLO cells, using MRPL14 Antibody. The lane on the right is blocked with the synthesized peptide.



Western blot analysis of the lysates from HUVEC cells using MRPL14 antibody.



Immunohistochemical analysis of paraffin-embedded human liver cancer. 1, Antibody was diluted at 1:200 (4° overnight). 2, Tris-EDTA, pH 9.0 was used for antigen retrieval. 3, Secondary antibody was diluted at 1:200 (room temperature, 45 min).