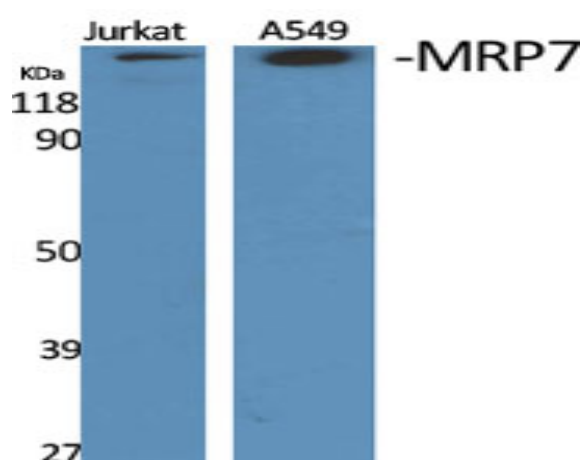


## MRP7 Polyclonal Antibody

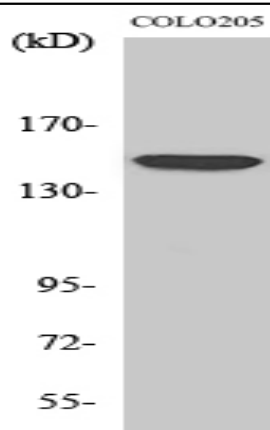
<b>Catalog No :</b>	YT2842
<b>Reactivity :</b>	Human;Monkey
<b>Applications :</b>	WB;IHC
<b>Target :</b>	MRP7
<b>Fields :</b>	>>ABC transporters
<b>Gene Name :</b>	ABCC10
<b>Protein Name :</b>	Multidrug resistance-associated protein 7
<b>Human Gene Id :</b>	89845
<b>Human Swiss Prot No :</b>	Q5T3U5
<b>Mouse Swiss Prot No :</b>	Q8R4P9
<b>Immunogen :</b>	The antiserum was produced against synthesized peptide derived from human MRP7. AA range:835-884
<b>Specificity :</b>	MRP7 Polyclonal Antibody detects endogenous levels of MRP7 protein.
<b>Formulation :</b>	Liquid in PBS containing 50% glycerol, 0.5% BSA and 0.02% sodium azide.
<b>Source :</b>	Polyclonal, Rabbit,IgG
<b>Dilution :</b>	WB 1:500-2000;IHC 1:50-300
<b>Purification :</b>	The antibody was affinity-purified from rabbit antiserum by affinity-chromatography using epitope-specific immunogen.
<b>Concentration :</b>	1 mg/ml
<b>Storage Stability :</b>	-15°C to -25°C/1 year(Do not lower than -25°C)

<b>Observed Band :</b>	162kD
<b>Cell Pathway :</b>	ABC transporters;
<b>Background :</b>	The protein encoded by this gene is a member of the superfamily of ATP-binding cassette (ABC) transporters. ABC proteins transport various molecules across extra- and intra-cellular membranes. ABC genes are divided into seven distinct subfamilies (ABC1, MDR/TAP, MRP, ALD, OABP, GCN20, and White). This ABC full-transporter is a member of the MRP subfamily which is involved in multi-drug resistance. Multiple transcript variants encoding different isoforms have been found for this gene.[provided by RefSeq, Nov 2010],
<b>Function :</b>	function:ATP-dependent transporter probably involved in cellular detoxification through lipophilic anion extrusion.,similarity:Belongs to the ABC transporter family.,similarity:Belongs to the ABC transporter family. Conjugate transporter (TC 3.A.1.208) subfamily.,similarity:Contains 2 ABC transmembrane type-1 domains.,similarity:Contains 2 ABC transporter domains.,tissue specificity:Isoform 1 is specifically expressed in spleen. Isoform 2 is more widely expressed.,
<b>Subcellular Location :</b>	Cell membrane ; Multi-pass membrane protein . Basolateral cell membrane ; Multi-pass membrane protein .
<b>Expression :</b>	[Isoform 1]: Specifically expressed in spleen. ; [Isoform 2]: Widely expressed.
<b>Sort :</b>	10221
<b>No4 :</b>	1

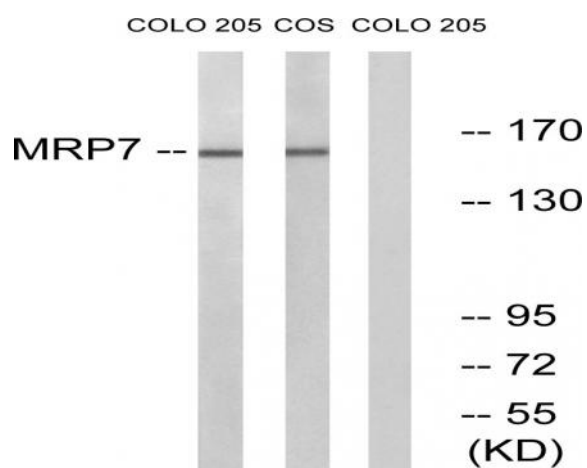
## Products Images



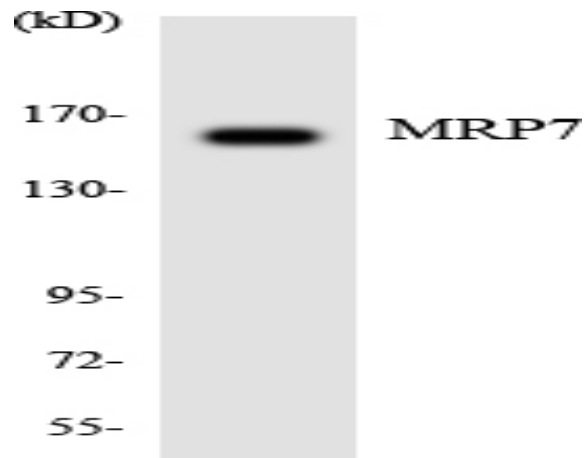
Western Blot analysis of various cells using MRP7 Polyclonal Antibody diluted at 1:1000



Western Blot analysis of COS7 cells using MRP7 Polyclonal Antibody diluted at 1:1000



Western blot analysis of lysates from COLO and COS7 cells, using MRP7 Antibody. The lane on the right is blocked with the synthesized peptide.

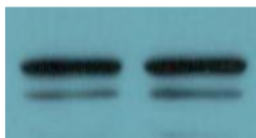


Western blot analysis of the lysates from HepG2 cells using MRP7 antibody.

ABCC10



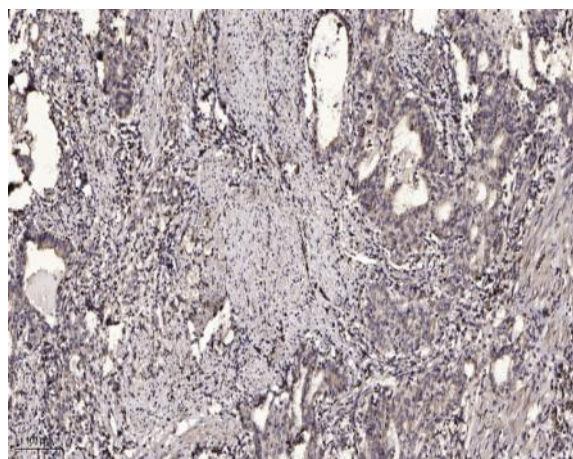
FTO



$\beta$ -actin



The picture was kindly provided by our customer. Primary antibody was diluted at 1:1000. Loading control antibody was diluted at 1:5000



Immunohistochemical analysis of paraffin-embedded human Gastric adenocarcinoma. 1, Antibody was diluted at 1:200(4° overnight). 2, Tris-EDTA,pH9.0 was used for antigen retrieval. 3,Secondary antibody was diluted at 1:200(room temperature, 45min).