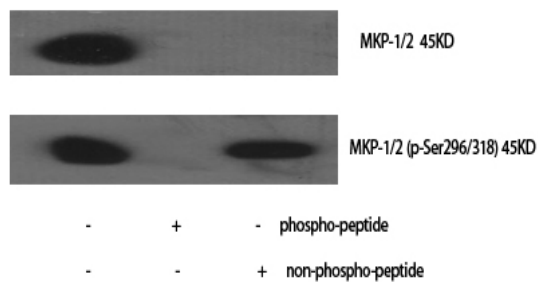


MKP-1/2 Polyclonal Antibody

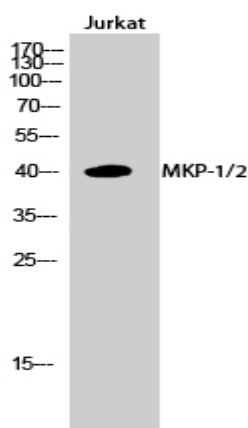
Catalog No :	YT2772
Reactivity :	Human;Mouse;Rat
Applications :	WB;IHC;IF;ELISA
Target :	MKP-1/2
Fields :	>>MAPK signaling pathway;>>Serotonergic synapse;>>Parkinson disease;>>Fluid shear stress and atherosclerosis
Gene Name :	DUSP1/4
Protein Name :	Dual specificity protein phosphatase 1/4
Human Gene Id :	1843/1846
Human Swiss Prot No :	P28562/Q13115
Mouse Gene Id :	19252/319520
Rat Gene Id :	114856/60587
Rat Swiss Prot No :	Q64623/Q62767
Immunogen :	The antiserum was produced against synthesized peptide derived from human MKP-1/2. AA range:261-310
Specificity :	MKP-1/2 Polyclonal Antibody detects endogenous levels of MKP-1/2 protein.
Formulation :	Liquid in PBS containing 50% glycerol, 0.5% BSA and 0.02% sodium azide.
Source :	Polyclonal, Rabbit,IgG
Dilution :	WB 1:500 - 1:2000. IHC 1:100 - 1:300. ELISA: 1:20000.. IF 1:50-200
Purification :	The antibody was affinity-purified from rabbit antiserum by affinity-chromatography using epitope-specific immunogen.

Concentration :	1 mg/ml
Storage Stability :	-15°C to -25°C/1 year(Do not lower than -25°C)
Observed Band :	41kD
Cell Pathway :	MAPK_ERK_Growth;MAPK_G_Protein;
Background :	<p>The expression of DUSP1 gene is induced in human skin fibroblasts by oxidative/heat stress and growth factors. It specifies a protein with structural features similar to members of the non-receptor-type protein-tyrosine phosphatase family, and which has significant amino-acid sequence similarity to a Tyr/Ser-protein phosphatase encoded by the late gene H1 of vaccinia virus. The bacterially expressed and purified DUSP1 protein has intrinsic phosphatase activity, and specifically inactivates mitogen-activated protein (MAP) kinase in vitro by the concomitant dephosphorylation of both its phosphothreonine and phosphotyrosine residues. Furthermore, it suppresses the activation of MAP kinase by oncogenic ras in extracts of Xenopus oocytes. Thus, DUSP1 may play an important role in the human cellular response to environmental stress as well as in the negative regulation of cellular proliferati</p>
Function :	<p>catalytic activity:A phosphoprotein + H(2)O = a protein + phosphate.,catalytic activity:Protein tyrosine phosphate + H(2)O = protein tyrosine + phosphate.,function: Dual specificity phosphatase that dephosphorylates MAP kinase ERK2 on both 'Thr-183' and 'Tyr-185'. ,induction:By oxidative stress and heat shock.,similarity:Belongs to the protein-tyrosine phosphatase family. Non-receptor class dual specificity subfamily.,similarity:Contains 1 rhodanese domain.,similarity:Contains 1 tyrosine-protein phosphatase domain.,tissue specificity:Expressed at high levels in the lung, liver placenta and pancreas. Moderate levels seen in the heart and skeletal muscle. Lower levels found in the brain and kidney.,</p>
Subcellular Location :	Nucleus .
Expression :	Expressed at high levels in the lung, liver placenta and pancreas. Moderate levels seen in the heart and skeletal muscle. Lower levels found in the brain and kidney.
Sort :	9662
No4 :	1

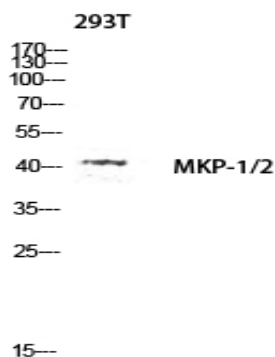
Products Images



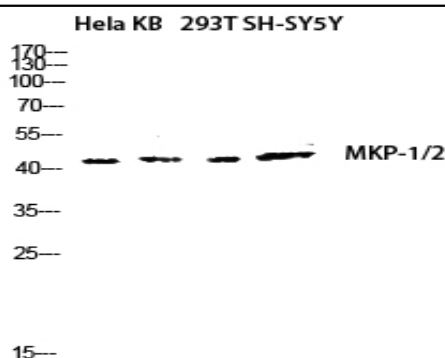
Western Blot analysis of various cells using MKP-1/2 Polyclonal Antibody diluted at 1:1000 cells nucleus extracted by Minute TM Cytoplasmic and Nuclear Fractionation kit (SC-003, Inventbiotech, MN, USA).



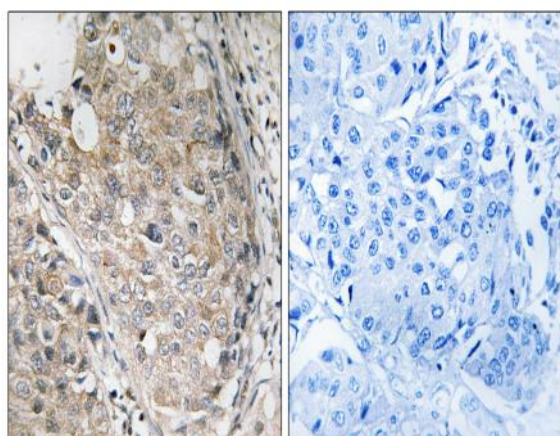
Western Blot analysis of Jurkat cells using MKP-1/2 Polyclonal Antibody diluted at 1:1000 cells nucleus extracted by Minute TM Cytoplasmic and Nuclear Fractionation kit (SC-003, Inventbiotech, MN, USA).



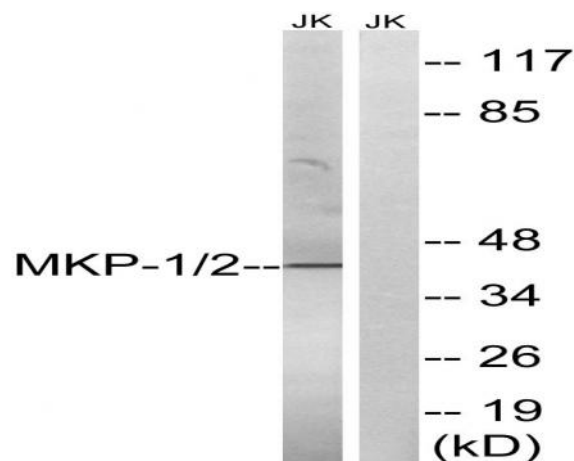
Western blot analysis of 293T lysis using MKP-1/2 antibody. Antibody was diluted at 1:1000 cells nucleus extracted by Minute TM Cytoplasmic and Nuclear Fractionation kit (SC-003, Inventbiotech, MN, USA).



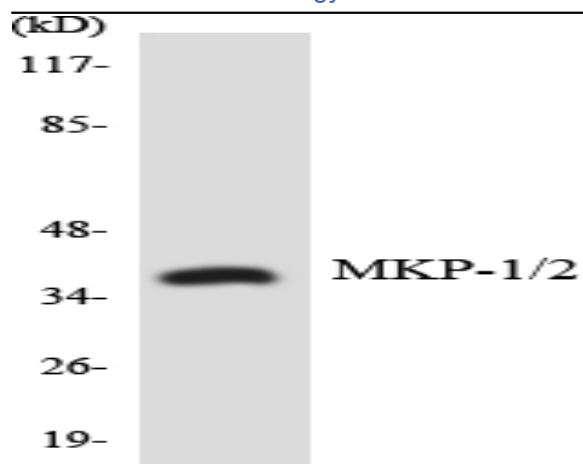
Western blot analysis of Hela KB 293T SH-SY5Y lysis using MKP-1/2 antibody. Antibody was diluted at 1:1000 cells nucleus extracted by Minute TM Cytoplasmic and Nuclear Fractionation kit (SC-003, Inventbiotech, MN, USA).



Immunohistochemistry analysis of paraffin-embedded human breast carcinoma tissue, using MKP-1/2 Antibody. The picture on the right is blocked with the synthesized peptide.



Western blot analysis of lysates from Jurkat cells, using MKP-1/2 Antibody. The lane on the right is blocked with the synthesized peptide.



Western blot analysis of the lysates from HepG2 cells using MKP-1/2 antibody.