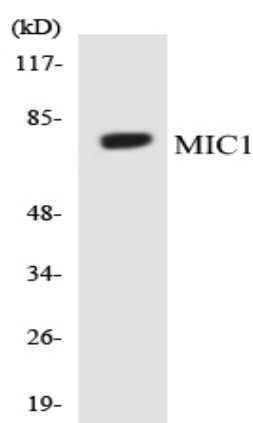
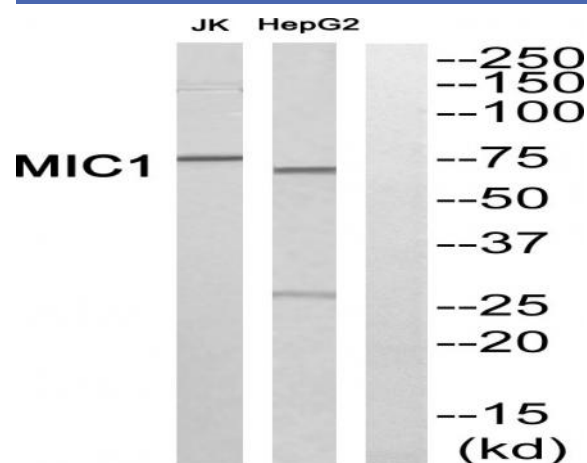


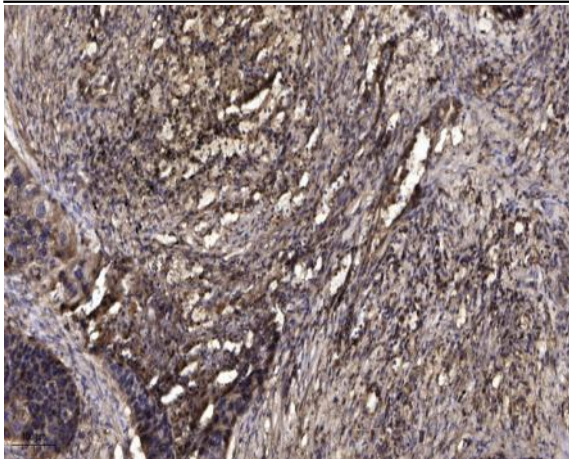
Mic-1 Polyclonal Antibody

Catalog No :	YT2757
Reactivity :	Human;Mouse
Applications :	WB;ELISA;IHC
Target :	Mic-1
Gene Name :	C18orf8
Protein Name :	Uncharacterized protein C18orf8
Human Gene Id :	29919
Human Swiss Prot No :	Q96DM3
Mouse Gene Id :	76482
Mouse Swiss Prot No :	Q8VC42
Immunogen :	The antiserum was produced against synthesized peptide derived from human MIC1. AA range:591-640
Specificity :	Mic-1 Polyclonal Antibody detects endogenous levels of Mic-1 protein.
Formulation :	Liquid in PBS containing 50% glycerol, 0.5% BSA and 0.02% sodium azide.
Source :	Polyclonal, Rabbit,IgG
Dilution :	WB 1:500-2000;IHC 1:50-300; ELISA 2000-20000
Purification :	The antibody was affinity-purified from rabbit antiserum by affinity-chromatography using epitope-specific immunogen.
Concentration :	1 mg/ml
Storage Stability :	-15°C to -25°C/1 year(Do not lower than -25°C)

Observed Band :	75kD
Background :	This gene encodes a colon cancer associated protein. [provided by RefSeq, Jan 2013],
Function :	similarity:Contains 1 Mic1 domain.,
Subcellular Location :	Lysosome membrane . Late endosome membrane .
Expression :	Colon carcinoma,Epithelium,Lung,Synovium,
Sort :	9634
No4 :	1

Products Images





Immunohistochemical analysis of paraffin-embedded human Squamous cell carcinoma of lung. 1, Antibody was diluted at 1:200(4° overnight). 2, Tris-EDTA,pH9.0 was used for antigen retrieval. 3,Secondary antibody was diluted at 1:200(room temperature, 45min).