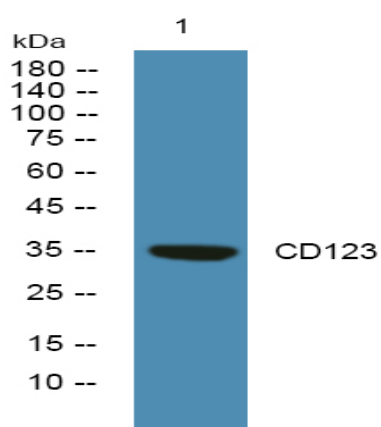


CD123 Polyclonal Antibody

Catalog No :	YN0170
Reactivity :	Human;Mouse;Rat
Applications :	WB;ELISA
Target :	CD123
Gene Name :	CDC123 C10orf7 D123
Protein Name :	Cell division cycle protein 123 homolog (Protein D123) (HT-1080) (PZ32)
Human Gene Id :	8872
Human Swiss Prot No :	O75794
Mouse Swiss Prot No :	Q8CII2
Rat Swiss Prot No :	Q62834
Immunogen :	Synthesized peptide derived from human protein . at AA range: 270-350
Specificity :	CD123 Polyclonal Antibody detects endogenous levels of protein.
Formulation :	Liquid in PBS containing 50% glycerol, and 0.02% sodium azide.
Source :	Polyclonal, Rabbit,IgG
Dilution :	WB 1:500-2000 ELISA 1:5000-20000
Purification :	The antibody was affinity-purified from rabbit antiserum by affinity-chromatography using epitope-specific immunogen.
Concentration :	1 mg/ml
Storage Stability :	-15°C to -25°C/1 year(Do not lower than -25°C)

Observed Band :	36kD
Background :	function:Required for S phase entry of the cell cycle.,PTM:Phosphorylated.,similarity:Belongs to the CDC123 family.,tissue specificity:Widely expressed. Expressed in spleen, thymus, prostate, testis, ovary, small intestine, colon and leukocytes with the highest expression in testis.,
Function :	function:Required for S phase entry of the cell cycle.,PTM:Phosphorylated.,similarity:Belongs to the CDC123 family.,tissue specificity:Widely expressed. Expressed in spleen, thymus, prostate, testis, ovary, small intestine, colon and leukocytes with the highest expression in testis.,
Subcellular Location :	Cytoplasm .
Expression :	Widely expressed. Expressed in spleen, thymus, prostate, testis, ovary, small intestine, colon and leukocytes with the highest expression in testis.
Sort :	18312
Host :	Rabbit
Modifications :	Unmodified

Products Images



Western blot analysis of lysates from A431 cells, primary antibody was diluted at 1:1000, 4° over night