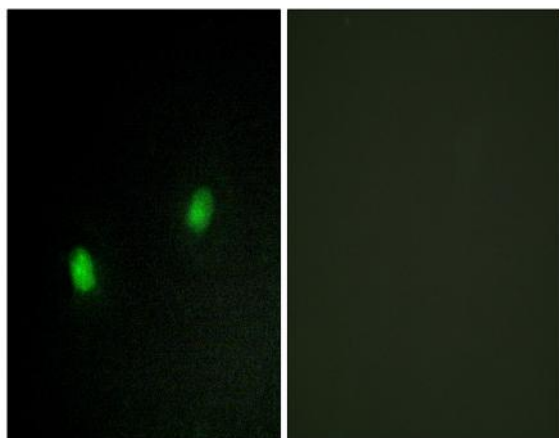


KOX4 Polyclonal Antibody

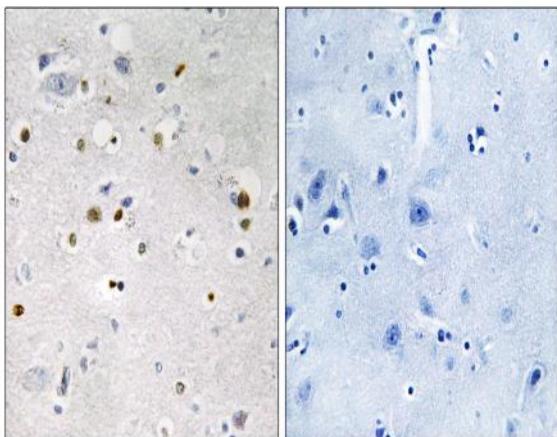
Catalog No :	YT2492
Reactivity :	Human;Mouse
Applications :	IHC;IF;ELISA
Target :	KOX4
Fields :	>>Herpes simplex virus 1 infection
Gene Name :	ZNF7
Protein Name :	Zinc finger protein 7
Human Gene Id :	7553
Human Swiss Prot No :	P17097
Immunogen :	The antiserum was produced against synthesized peptide derived from human ZNF7. AA range:41-90
Specificity :	KOX4 Polyclonal Antibody detects endogenous levels of KOX4 protein.
Formulation :	Liquid in PBS containing 50% glycerol, 0.5% BSA and 0.02% sodium azide.
Source :	Polyclonal, Rabbit,IgG
Dilution :	IHC 1:100 - 1:300. IF 1:200 - 1:1000. ELISA: 1:20000. Not yet tested in other applications.
Purification :	The antibody was affinity-purified from rabbit antiserum by affinity-chromatography using epitope-specific immunogen.
Concentration :	1 mg/ml
Storage Stability :	-15°C to -25°C/1 year(Do not lower than -25°C)
Molecularweight :	78kD

Background :	function:May be involved in transcriptional regulation.,similarity:Belongs to the krueppel C2H2-type zinc-finger protein family.,similarity:Contains 1 KRAB domain.,similarity:Contains 15 C2H2-type zinc fingers.,tissue specificity:Ubiquitously present in many human cell lines of different embryological derivation.,
Function :	function:May be involved in transcriptional regulation.,similarity:Belongs to the krueppel C2H2-type zinc-finger protein family.,similarity:Contains 1 KRAB domain.,similarity:Contains 15 C2H2-type zinc fingers.,tissue specificity:Ubiquitously present in many human cell lines of different embryological derivation.,
Subcellular Location :	Nucleus .
Expression :	Ubiquitously present in many human cell lines of different embryological derivation.
Sort :	8979
No4 :	1

Products Images



Immunofluorescence analysis of HeLa cells, using ZNF7 Antibody. The picture on the right is blocked with the synthesized peptide.



Immunohistochemistry analysis of paraffin-embedded human brain tissue, using ZNF7 Antibody. The picture on the right is blocked with the synthesized peptide.