

KCNF1 Polyclonal Antibody

Catalog No :	YT2453
Reactivity :	Human;Mouse
Applications :	WB;ELISA;IHC
Target :	KCNF1
Gene Name :	KCNF1
Protein Name :	Potassium voltage-gated channel subfamily F member 1
Human Gene Id :	3754
Human Swiss Prot No :	Q9H3M0
Mouse Gene Id :	382571
Mouse Swiss Prot No :	Q7TSH7
Immunogen :	The antiserum was produced against synthesized peptide derived from human KCNF1. AA range:191-240
Specificity :	KCNF1 Polyclonal Antibody detects endogenous levels of KCNF1 protein.
Formulation :	Liquid in PBS containing 50% glycerol, 0.5% BSA and 0.02% sodium azide.
Source :	Polyclonal, Rabbit,IgG
Dilution :	WB 1:500-2000;IHC 1:50-300; ELISA 2000-20000
Purification :	The antibody was affinity-purified from rabbit antiserum by affinity-chromatography using epitope-specific immunogen.
Concentration :	1 mg/ml
Storage Stability :	-15°C to -25°C/1 year(Do not lower than -25°C)

Observed Band : 55kD

Background : Voltage-gated potassium (Kv) channels represent the most complex class of voltage-gated ion channels from both functional and structural standpoints. Their diverse functions include regulating neurotransmitter release, heart rate, insulin secretion, neuronal excitability, epithelial electrolyte transport, smooth muscle contraction, and cell volume. This gene encodes a member of the potassium channel, voltage-gated, subfamily F. This gene is intronless and expressed in all tissues tested, including the heart, skeletal muscle, brain, kidney, and pancreas. [provided by RefSeq, Jul 2008],

Function : domain:The segment S4 is probably the voltage-sensor and is characterized by a series of positively charged amino acids at every third position.,function:Putative voltage-gated potassium channel.,similarity:Belongs to the potassium channel family. F subfamily.,subunit:Heteromultimer with KCNG3, KCNG4 and KCNV2. Interacts with DLG1.,tissue specificity:Detected in heart, brain, liver, skeletal muscle, kidney and pancreas.,

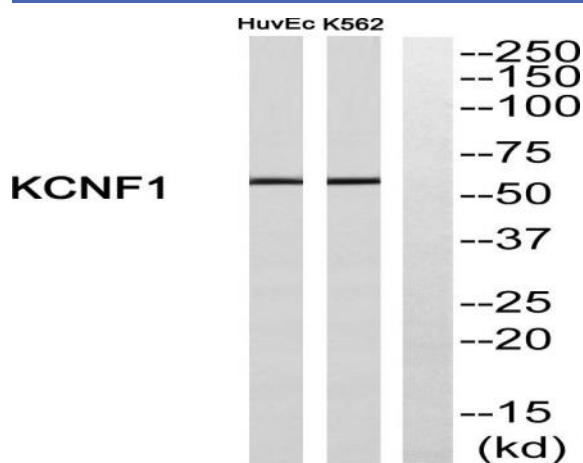
Subcellular Location : Membrane; Multi-pass membrane protein.

Expression : Detected in heart, brain, liver, skeletal muscle, kidney and pancreas.

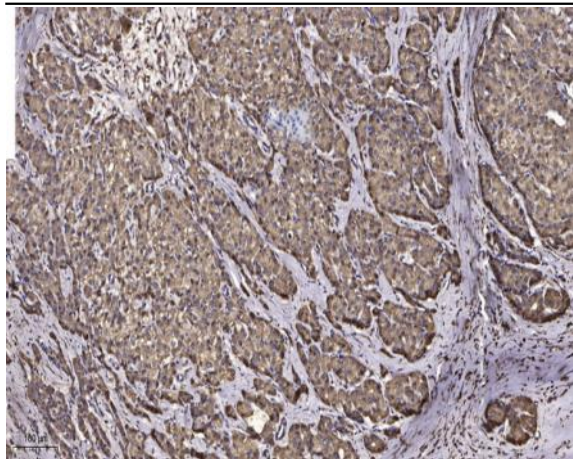
Sort : 8854

No4 : 1

Products Images



Western blot analysis of KCNF1 Antibody. The lane on the right is blocked with the KCNF1 peptide.



Immunohistochemical analysis of paraffin-embedded human liver cancer. 1, Antibody was diluted at 1:200(4° overnight). 2, Tris-EDTA,pH9.0 was used for antigen retrieval. 3,Secondary antibody was diluted at 1:200(room temperature, 45min).