

## MAD2L1BP Polyclonal Antibody

<b>Catalog No :</b>	YT2619
<b>Reactivity :</b>	Human;Rat;Mouse;
<b>Applications :</b>	WB;ELISA
<b>Target :</b>	MAD2L1BP
<b>Gene Name :</b>	MAD2L1BP
<b>Protein Name :</b>	MAD2L1-binding protein
<b>Human Gene Id :</b>	9587
<b>Human Swiss Prot No :</b>	Q15013
<b>Mouse Swiss Prot No :</b>	Q9DCX1
<b>Immunogen :</b>	Synthesized peptide derived from MAD2L1BP . at AA range: 10-90
<b>Specificity :</b>	MAD2L1BP Polyclonal Antibody detects endogenous levels of MAD2L1BP protein.
<b>Formulation :</b>	Liquid in PBS containing 50% glycerol, 0.5% BSA and 0.02% sodium azide.
<b>Source :</b>	Polyclonal, Rabbit,IgG
<b>Dilution :</b>	WB 1:500 - 1:2000. ELISA: 1:10000. Not yet tested in other applications.
<b>Purification :</b>	The antibody was affinity-purified from rabbit antiserum by affinity-chromatography using epitope-specific immunogen.
<b>Concentration :</b>	1 mg/ml
<b>Storage Stability :</b>	-15°C to -25°C/1 year(Do not lower than -25°C)
<b>Observed Band :</b>	31kD

## Background :

The protein encoded by this gene was identified as a binding protein of the MAD2 mitotic arrest deficient-like 1 (MAD2/MAD2L1). MAD2 is a key component of the spindle checkpoint that delays the onset of anaphase until all the kinetochores are attached to the spindle. This protein may interact with the spindle checkpoint and coordinate cell cycle events in late mitosis. Alternatively spliced transcript variants encoding distinct isoforms have been observed. [provided by RefSeq, Jul 2008],

## Function :

developmental stage:During the cell cycle, levels increase and then remain constant until late mitosis after which they drop.,function:May function to silence the spindle checkpoint and allow mitosis to proceed through anaphase by binding MAD2L1 after it has become dissociated from the MAD2L1-CDC20 complex.,PTM:Phosphorylated upon DNA damage, probably by ATM or ATR.,similarity:Belongs to the MAD2L1BP family.,subcellular location:During early mitosis, unevenly distributed throughout the nucleoplasm. From metaphase to anaphase, concentrated on the spindle.,subunit:Interacts with MAD2L1.,

## Subcellular Location :

Nucleus. Cytoplasm, cytoskeleton, spindle. During early mitosis, unevenly distributed throughout the nucleoplasm. From metaphase to anaphase, concentrated on the spindle.

## Expression :

Bone marrow,Brain,Lung,

## Sort :

9329

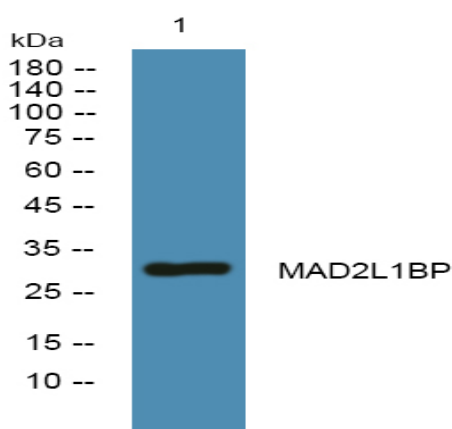
## Host :

Rabbit

## Modifications :

Unmodified

## Products Images



Western blot analysis of lysates from SH-SY5Y cells, primary antibody was diluted at 1:1000, 4° over night