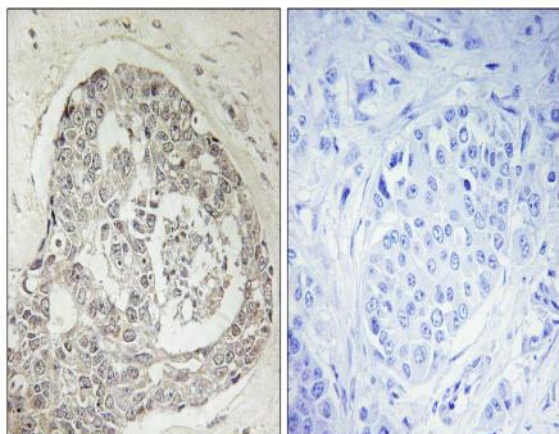


## KIAA0100 Polyclonal Antibody

<b>Catalog No :</b>	YT2468
<b>Reactivity :</b>	Human;Rat;Mouse;
<b>Applications :</b>	IHC;IF;ELISA
<b>Target :</b>	KIAA0100
<b>Gene Name :</b>	KIAA0100
<b>Protein Name :</b>	UPF0378 protein KIAA0100
<b>Human Gene Id :</b>	9703
<b>Human Swiss Prot No :</b>	Q14667
<b>Mouse Swiss Prot No :</b>	Q5SYL3
<b>Immunogen :</b>	The antiserum was produced against synthesized peptide derived from human KIAA0100. AA range:681-730
<b>Specificity :</b>	KIAA0100 Polyclonal Antibody detects endogenous levels of KIAA0100 protein.
<b>Formulation :</b>	Liquid in PBS containing 50% glycerol, 0.5% BSA and 0.02% sodium azide.
<b>Source :</b>	Polyclonal, Rabbit,IgG
<b>Dilution :</b>	IHC 1:100 - 1:300. IF 1:200 - 1:1000. ELISA: 1:20000. Not yet tested in other applications.
<b>Purification :</b>	The antibody was affinity-purified from rabbit antiserum by affinity-chromatography using epitope-specific immunogen.
<b>Concentration :</b>	1 mg/ml
<b>Storage Stability :</b>	-15°C to -25°C/1 year(Do not lower than -25°C)
<b>Molecularweight :</b>	254kD

<b>Background :</b>	sequence caution:Contaminating sequence.,sequence caution:Sequencing errors.,similarity:Belongs to the UPF0378 family.,tissue specificity:Expressed in pancreas, placenta and up-regulated in breast carcinoma epithelial cells, ductal in situ carcinoma (DCIS), invasive breast carcinoma (IBC) and metastatic breast carcinoma cells (MET).,
<b>Function :</b>	sequence caution:Contaminating sequence.,sequence caution:Sequencing errors.,similarity:Belongs to the UPF0378 family.,tissue specificity:Expressed in pancreas, placenta and up-regulated in breast carcinoma epithelial cells, ductal in situ carcinoma (DCIS), invasive breast carcinoma (IBC) and metastatic breast carcinoma cells (MET).,
<b>Subcellular Location :</b>	Secreted .
<b>Expression :</b>	Expressed in pancreas, placenta and up-regulated in breast carcinoma epithelial cells, ductal in situ carcinoma (DCIS), invasive breast carcinoma (IBC) and metastatic breast carcinoma cells (MET).
<b>Sort :</b>	8906
<b>No4 :</b>	1
<b>Host :</b>	Rabbit
<b>Modifications :</b>	Unmodified

## Products Images



Immunohistochemistry analysis of paraffin-embedded human breast carcinoma, using K0100 Antibody. The picture on the right is blocked with the synthesized peptide.