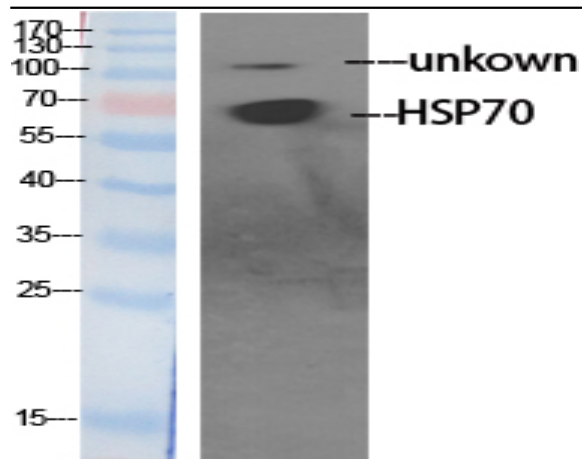


## HSP70L Polyclonal Antibody

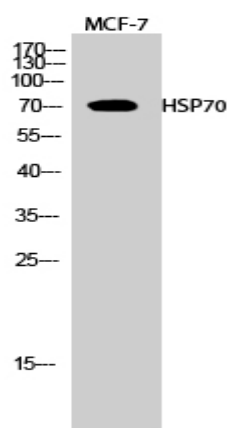
<b>Catalog No :</b>	YT2242
<b>Reactivity :</b>	Human;Mouse;Rat
<b>Applications :</b>	WB;IHC;IF;ELISA
<b>Target :</b>	HSP70L
<b>Fields :</b>	>>Spliceosome;>>MAPK signaling pathway;>>Protein processing in endoplasmic reticulum;>>Endocytosis;>>Longevity regulating pathway - multiple species;>>Antigen processing and presentation;>>Estrogen signaling pathway;>>Prion disease;>>Legionellosis;>>Toxoplasmosis;>>Measles;>>Lipid and atherosclerosis
<b>Gene Name :</b>	HSPA1L/HSPA1A
<b>Protein Name :</b>	Heat shock 70 kDa protein 1-like/Heat shock 70 kDa protein 1A/1B
<b>Human Gene Id :</b>	3305/3303/3304
<b>Human Swiss Prot No :</b>	P34931/P08107
<b>Mouse Gene Id :</b>	15482/193740
<b>Rat Gene Id :</b>	24963/24472
<b>Rat Swiss Prot No :</b>	P55063/Q07439
<b>Immunogen :</b>	The antiserum was produced against synthesized peptide derived from human HSPA1L. AA range:221-270
<b>Specificity :</b>	HSP70 Polyclonal Antibody detects endogenous levels of HSP70 protein.
<b>Formulation :</b>	Liquid in PBS containing 50% glycerol, 0.5% BSA and 0.02% sodium azide.
<b>Source :</b>	Polyclonal, Rabbit,IgG
<b>Dilution :</b>	WB 1:500 - 1:2000. IHC 1:100 - 1:300. ELISA: 1:40000.. IF 1:50-200

<b>Purification :</b>	The antibody was affinity-purified from rabbit antiserum by affinity-chromatography using epitope-specific immunogen.
<b>Concentration :</b>	1 mg/ml
<b>Storage Stability :</b>	-15°C to -25°C/1 year(Do not lower than -25°C)
<b>Observed Band :</b>	70kD
<b>Cell Pathway :</b>	Spliceosome;MAPK_ERK_Growth;MAPK_G_Protein;Endocytosis;Antigen processing and presentation;
<b>Background :</b>	This gene encodes a 70kDa heat shock protein. In conjunction with other heat shock proteins, this protein stabilizes existing proteins against aggregation and mediates the folding of newly translated proteins in the cytosol and in organelles. The gene is located in the major histocompatibility complex class III region, in a cluster with two closely related genes which also encode isoforms of the 70kDa heat shock protein. [provided by RefSeq, Jul 2008],
<b>Function :</b>	function:In cooperation with other chaperones, Hsp70s stabilize preexistent proteins against aggregation and mediate the folding of newly translated polypeptides in the cytosol as well as within organelles. These chaperones participate in all these processes through their ability to recognize nonnative conformations of other proteins. They bind extended peptide segments with a net hydrophobic character exposed by polypeptides during translation and membrane translocation, or following stress-induced damage.,induction:Not induced by heat shock.,similarity:Belongs to the heat shock protein 70 family.,tissue specificity:Expressed in spermatids.,
<b>Subcellular Location :</b>	zona pellucida receptor complex,nucleoplasm,mitochondrial matrix,cytosol,COP9 signalosome,cell body,blood microparticle,
<b>Expression :</b>	Expressed in spermatids.
<b>Sort :</b>	7927
<b>No4 :</b>	1

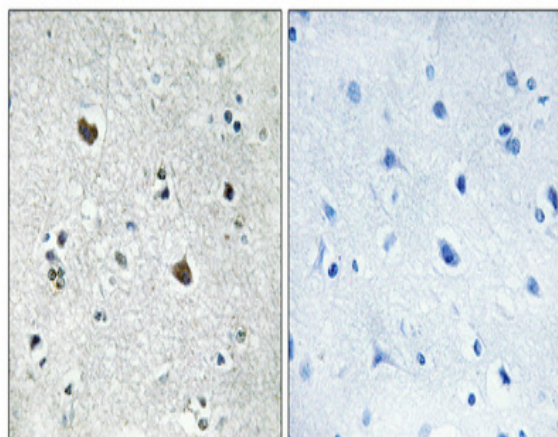
## Products Images



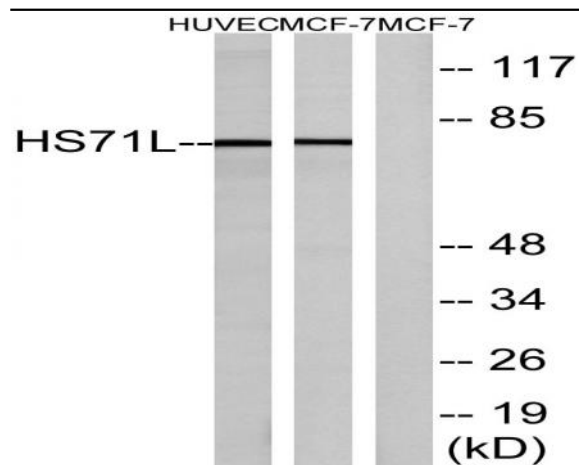
Western Blot analysis of various cells using HSP70 Polyclonal Antibody diluted at 1:1000



Western Blot analysis of MCF-7 cells using HSP70 Polyclonal Antibody diluted at 1:1000



Immunohistochemical analysis of paraffin-embedded Human brain. Antibody was diluted at 1:100(4° overnight). High-pressure and temperature Tris-EDTA,pH8.0 was used for antigen retrieval. Negative contrl (right) obtained from antibody was pre-absorbed by immunogen peptide.



Western blot analysis of lysates from MCF-7 cells and HUVEC cells, using HS71L Antibody. The lane on the right is blocked with the synthesized peptide.