

hnRNP A1 Polyclonal Antibody

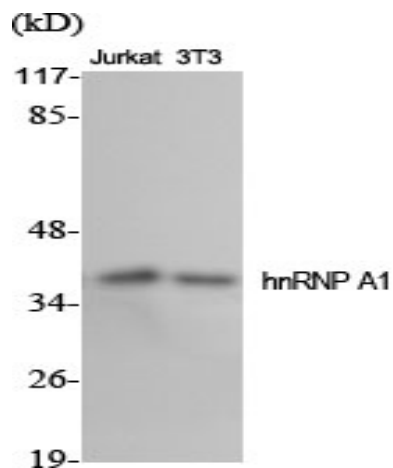
Catalog No :	YT2192
Reactivity :	Human;Mouse;Rat
Applications :	WB;IHC;IF;ELISA
Target :	hnRNP A1
Fields :	>>Spliceosome;>>Amyotrophic lateral sclerosis
Gene Name :	HNRNPA1
Protein Name :	Heterogeneous nuclear ribonucleoprotein A1
Human Gene Id :	3178
Human Swiss Prot No :	P09651
Mouse Gene Id :	15382
Mouse Swiss Prot No :	P49312
Rat Gene Id :	29578
Rat Swiss Prot No :	P04256
Immunogen :	The antiserum was produced against synthesized peptide derived from human hnRNP A1. AA range:51-100
Specificity :	hnRNP A1 Polyclonal Antibody detects endogenous levels of hnRNP A1 protein.
Formulation :	Liquid in PBS containing 50% glycerol, 0.5% BSA and 0.02% sodium azide.
Source :	Polyclonal, Rabbit,IgG
Dilution :	WB 1:500 - 1:2000. IHC 1:100 - 1:300. IF 1:200 - 1:1000. ELISA: 1:20000. Not yet tested in other applications.

Purification :	The antibody was affinity-purified from rabbit antiserum by affinity-chromatography using epitope-specific immunogen.
Concentration :	1 mg/ml
Storage Stability :	-15°C to -25°C/1 year(Do not lower than -25°C)
Observed Band :	33kD
Cell Pathway :	Spliceosome;
Background :	<p>This gene encodes a member of a family of ubiquitously expressed heterogeneous nuclear ribonucleoproteins (hnRNPs), which are RNA-binding proteins that associate with pre-mRNAs in the nucleus and influence pre-mRNA processing, as well as other aspects of mRNA metabolism and transport. The protein encoded by this gene is one of the most abundant core proteins of hnRNP complexes and plays a key role in the regulation of alternative splicing. Mutations in this gene have been observed in individuals with amyotrophic lateral sclerosis 20. Multiple alternatively spliced transcript variants have been found. There are numerous pseudogenes of this gene distributed throughout the genome. [provided by RefSeq, Feb 2016],</p>
Function :	<p>function:Involved in the packaging of pre-mRNA into hnRNP particles, transport of poly(A) mRNA from the nucleus to the cytoplasm and may modulate splice site selection.,PTM:Arg-194, Arg-206 and Arg-225 are dimethylated, probably to asymmetric dimethylarginine.,similarity:Contains 2 RRM (RNA recognition motif) domains.,subcellular location:Shuttles continuously between the nucleus and the cytoplasm along with mRNA. Component of ribonucleosomes.,subunit:Identified in the spliceosome C complex, at least composed of AQR, ASCC3L1, C19orf29, CDC40, CDC5L, CRNKL1, DDX23, DDX41, DDX48, DDX5, DGCR14, DHX35, DHX38, DHX8, EFTUD2, FRG1, GPATC1, HNRNPA1, HNRNPA2B1, HNRPA3, HNRNPC, HNRPF, HNRPH1, HNRPK, HNRPM, HNRNPR, HNRNPU, KIAA1160, KIAA1604, LSM2, LSM3, MAGOH, MORG1, PABPC1, PLRG1, PNN, PPIE, PPIL1, PPIL3, PPWD1, PRPF19, PRPF4B, PRPF6, PRPF8, RALY, RBM22, RBM8A, RBMX, SART1, SF3A1, SF3A2, SF3A3, S</p>
Subcellular Location :	<p>Nucleus . Cytoplasm . Localized in cytoplasmic mRNP granules containing untranslated mRNAs. Shuttles continuously between the nucleus and the cytoplasm along with mRNA. Component of ribonucleosomes (PubMed:17289661). .; Cytoplasm . (Microbial infection) In the course of viral infection, colocalizes with HCV NS5B at speckles in the cytoplasm in a HCV-replication dependent manner. .; Nucleus . (Microbial infection) SARS coronavirus-2/SARS-CoV-2 ORF6 protein increases accumulation to the nucleus.</p>
Expression :	Bone marrow,Cervix,Cervix carcinoma,Epithelium,Eye,Fetal br

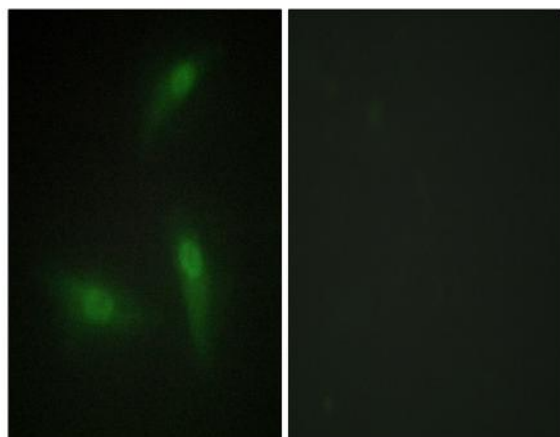
Sort : 7716

No4 : 1

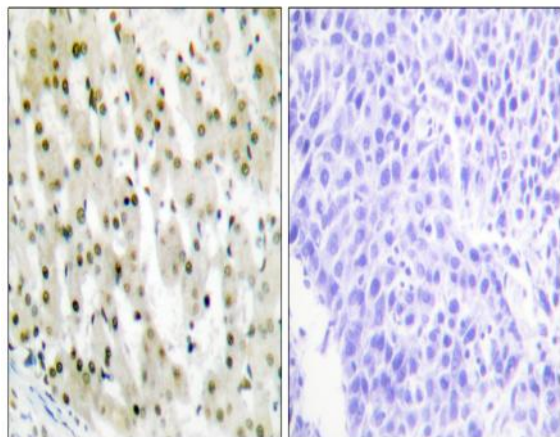
Products Images



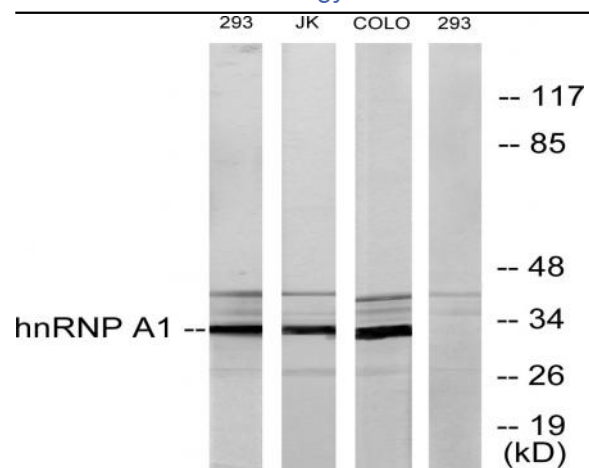
Western Blot analysis of various cells using hnRNP A1 Polyclonal Antibody diluted at 1:2000



Immunofluorescence analysis of HeLa cells, using hnRNP A1 Antibody. The picture on the right is blocked with the synthesized peptide.



Immunohistochemistry analysis of paraffin-embedded human liver carcinoma tissue, using hnRNP A1 Antibody. The picture on the right is blocked with the synthesized peptide.



Western blot analysis of lysates from 293, Jurkat, and COLO205 cells, using hnRNP A1 Antibody. The lane on the right is blocked with the synthesized peptide.