

HMG-14 Polyclonal Antibody

Catalog No :	YT2184
Reactivity :	Human;Mouse;Rat
Applications :	IHC;IF;ELISA
Target :	HMG-14
Gene Name :	HMGN1
Protein Name :	Non-histone chromosomal protein HMG-14
Human Gene Id :	3150
Human Swiss Prot No :	P05114
Mouse Gene Id :	1.00044e+008
Mouse Swiss Prot No :	P18608
Immunogen :	The antiserum was produced against synthesized peptide derived from human HMG14. AA range:10-59
Specificity :	HMG-14 Polyclonal Antibody detects endogenous levels of HMG-14 protein.
Formulation :	Liquid in PBS containing 50% glycerol, 0.5% BSA and 0.02% sodium azide.
Source :	Polyclonal, Rabbit,IgG
Dilution :	IHC 1:100 - 1:300. IF 1:200 - 1:1000. ELISA: 1:20000. Not yet tested in other applications.
Purification :	The antibody was affinity-purified from rabbit antiserum by affinity-chromatography using epitope-specific immunogen.
Concentration :	1 mg/ml
Storage Stability :	-15°C to -25°C/1 year(Do not lower than -25°C)

Molecularweight : 11kD

Background : The protein encoded by this gene binds nucleosomal DNA and is associated with transcriptionally active chromatin. Along with a similar protein, HMG17, the encoded protein may help maintain an open chromatin configuration around transcribable genes. [provided by RefSeq, Aug 2011],

Function : function: Binds to the inner side of the nucleosomal DNA thus altering the interaction between the DNA and the histone octamer. May be involved in the process which maintains transcribable genes in a unique chromatin conformation. Inhibits the phosphorylation of nucleosomal histones H3 and H2A by RPS6KA5/MSK1 and RPS6KA3/RSK2., mass spectrometry: PubMed:10739259, PTM: Phosphorylation on Ser-21 and Ser-25 weakens binding to nucleosomes and increases the rate of H3 phosphorylation (By similarity). Phosphorylation favors cytoplasmic localization., RNA editing: Partially edited. A new initiator methionine may be created by a single uridine insertion in the 5'-UTR, causing an N-terminal extension of 45 amino acids. The existence of the RNA edited version is supported by direct protein sequencing by MS/MS of the following peptides specific to that version: 23-31 and 40-48. The RNA edited version is

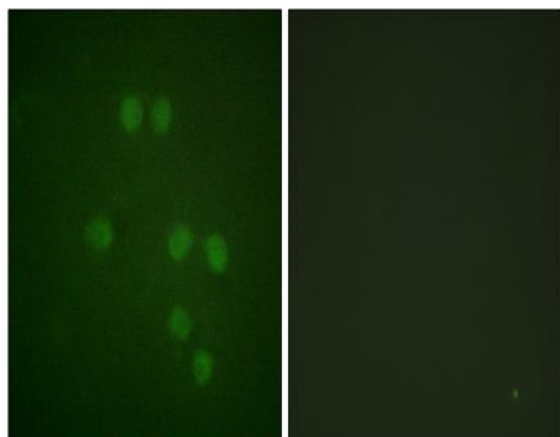
Subcellular Location : Nucleus. Cytoplasm. Cytoplasmic enrichment upon phosphorylation. The RNA edited version localizes to the nucleus.

Expression : Bone marrow, Brain, Epithelium, Liver, Ovary, Pooled, Skin,

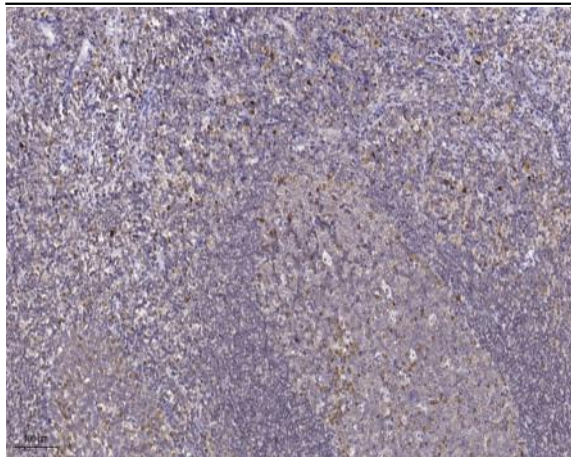
Sort : 7689

No4 : 1

Products Images



Immunofluorescence analysis of HepG2 cells, using HMG14 Antibody. The picture on the right is blocked with the synthesized peptide.



Immunohistochemical analysis of paraffin-embedded human tonsil. 1, Tris-EDTA, pH 9.0 was used for antigen retrieval. 2 Antibody was diluted at 1:200 (4° overnight). 3, Secondary antibody was diluted at 1:200 (room temperature, 45 min).