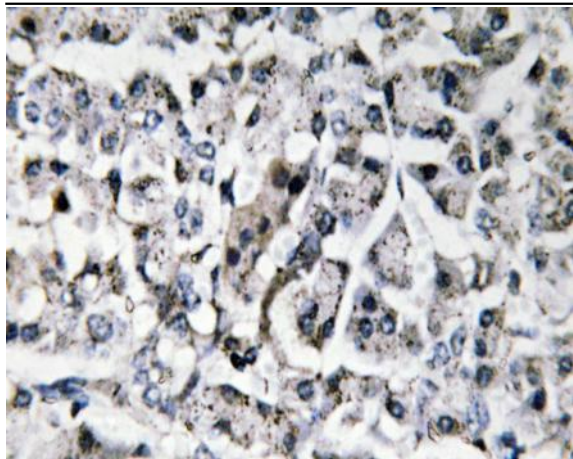


IL-11 Polyclonal Antibody

Catalog No :	YT2309
Reactivity :	Human;Mouse;Rat
Applications :	IHC;IF;ELISA
Target :	IL-11
Fields :	>>Cytokine-cytokine receptor interaction;>>JAK-STAT signaling pathway;>>Hematopoietic cell lineage;>>Rheumatoid arthritis
Gene Name :	IL11
Protein Name :	Interleukin-11
Human Gene Id :	3589
Human Swiss Prot No :	P20809
Mouse Gene Id :	16156
Mouse Swiss Prot No :	P47873
Rat Swiss Prot No :	Q99MF5
Immunogen :	The antiserum was produced against synthesized peptide derived from human IL-11. AA range:27-76
Specificity :	IL-11 Polyclonal Antibody detects endogenous levels of IL-11 protein.
Formulation :	Liquid in PBS containing 50% glycerol, 0.5% BSA and 0.02% sodium azide.
Source :	Polyclonal, Rabbit,IgG
Dilution :	IHC 1:100 - 1:300. ELISA: 1:5000.. IF 1:50-200
Purification :	The antibody was affinity-purified from rabbit antiserum by affinity-chromatography using epitope-specific immunogen.

Concentration :	1 mg/ml
Storage Stability :	-15°C to -25°C/1 year(Do not lower than -25°C)
Molecularweight :	21kD
Cell Pathway :	Cytokine-cytokine receptor interaction;Jak_STAT;Hematopoietic cell lineage;
Background :	<p>The protein encoded by this gene is a member of the gp130 family of cytokines. These cytokines drive the assembly of multisubunit receptor complexes, all of which contain at least one molecule of the transmembrane signaling receptor IL6ST (gp130). This cytokine is shown to stimulate the T-cell-dependent development of immunoglobulin-producing B cells. It is also found to support the proliferation of hematopoietic stem cells and megakaryocyte progenitor cells. Alternatively spliced transcript variants encoding distinct isoforms have been found for this gene. [provided by RefSeq, Jun 2012],</p>
Function :	<p>function:Directly stimulates the proliferation of hematopoietic stem cells and megakaryocyte progenitor cells and induces megakaryocyte maturation resulting in increased platelet production.,online information:Clinical information on Neumega,online information:Interleukin-11 entry,pharmaceutical:Available under the name Neumega (Wyeth). Used for the prevention of severe thrombocytopenia and the reduction of the need for platelet transfusion following myelosuppressive chemotherapy.,similarity:Belongs to the IL-6 superfamily.,</p>
Subcellular Location :	Secreted .
Expression :	Bone marrow,Prostate,
Sort :	8420
No4 :	1
Host :	Rabbit
Modifications :	Unmodified

Products Images



Immunohistochemistry analysis of IL-11 antibody in paraffin-embedded human pancreas tissue.