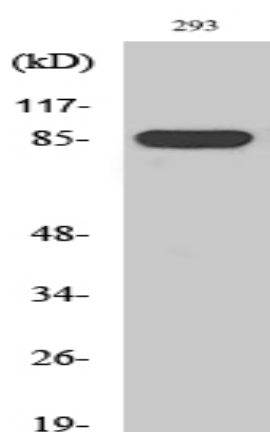


GPR156 Polyclonal Antibody

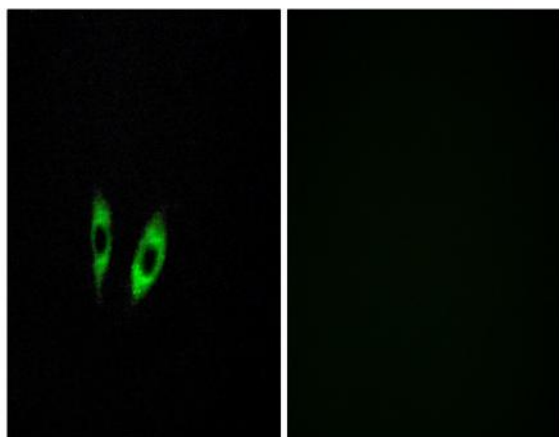
Catalog No :	YT1987
Reactivity :	Human;Rat;Mouse;
Applications :	WB;IF;ELISA
Target :	GPR156
Fields :	>>Neuroactive ligand-receptor interaction
Gene Name :	GPR156
Protein Name :	Probable G-protein coupled receptor 156
Human Gene Id :	165829
Human Swiss Prot No :	Q8NFN8
Mouse Swiss Prot No :	Q6PCP7
Immunogen :	The antiserum was produced against synthesized peptide derived from human GPR156. AA range:501-550
Specificity :	GPR156 Polyclonal Antibody detects endogenous levels of GPR156 protein.
Formulation :	Liquid in PBS containing 50% glycerol, 0.5% BSA and 0.02% sodium azide.
Source :	Polyclonal, Rabbit,IgG
Dilution :	WB 1:500 - 1:2000. IF 1:200 - 1:1000. ELISA: 1:5000. Not yet tested in other applications.
Purification :	The antibody was affinity-purified from rabbit antiserum by affinity-chromatography using epitope-specific immunogen.
Concentration :	1 mg/ml
Storage Stability :	-15°C to -25°C/1 year(Do not lower than -25°C)

Observed Band :	89kD
Cell Pathway :	Neuroactive ligand-receptor interaction;
Background :	G protein-coupled receptors (GPCRs) are a large superfamily of cell surface receptors characterized by 7 helical transmembrane domains, together with N-terminal extracellular and C-terminal intracellular domains.[supplied by OMIM, Mar 2008],
Function :	function:Orphan receptor.,similarity:Belongs to the G-protein coupled receptor 3 family. GABA-B receptor subfamily.,tissue specificity:Ubiquitous expression both in the CNS and in peripheral tissues. Very high expression in fetal brain and testis relative to expression in other tissues.,
Subcellular Location :	Cell membrane; Multi-pass membrane protein.
Expression :	Ubiquitous expression both in the CNS and in peripheral tissues. Very high expression in fetal brain and testis relative to expression in other tissues.
Sort :	7016
No4 :	1

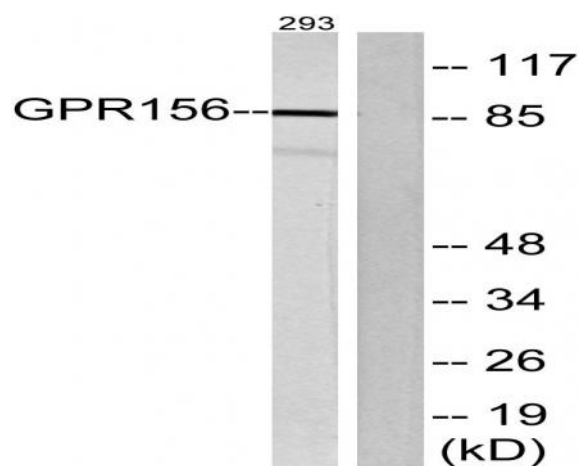
Products Images



Western Blot analysis of various cells using GPR156 Polyclonal Antibody



Immunofluorescence analysis of HeLa cells, using GPR156 Antibody. The picture on the right is blocked with the synthesized peptide.



Western blot analysis of lysates from 293 cells, using GPR156 Antibody. The lane on the right is blocked with the synthesized peptide.