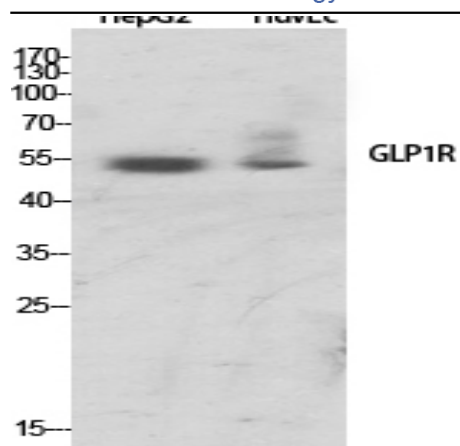


GLP-1R Polyclonal Antibody

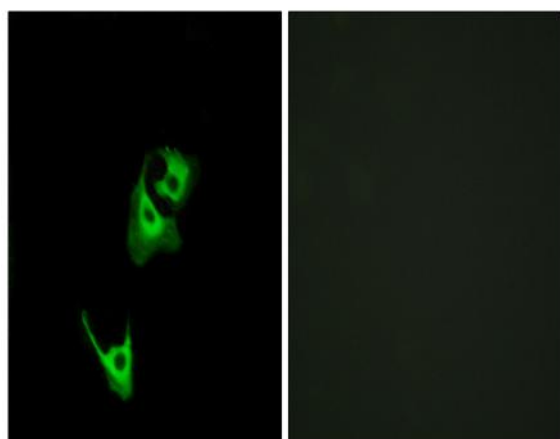
Catalog No :	YT1916
Reactivity :	Human;Mouse;Rat
Applications :	WB;IF;ELISA
Target :	GLP1R
Fields :	>>cAMP signaling pathway;>>Neuroactive ligand-receptor interaction;>>Insulin secretion
Gene Name :	GLP1R
Protein Name :	Glucagon-like peptide 1 receptor
Human Gene Id :	2740
Human Swiss Prot No :	P43220
Mouse Swiss Prot No :	O35659
Immunogen :	The antiserum was produced against synthesized peptide derived from human GLP1R. AA range:101-150
Specificity :	GLP-1R Polyclonal Antibody detects endogenous levels of GLP-1R protein.
Formulation :	Liquid in PBS containing 50% glycerol, 0.5% BSA and 0.02% sodium azide.
Source :	Polyclonal, Rabbit,IgG
Dilution :	WB 1:500 - 1:2000. IF 1:200 - 1:1000. ELISA: 1:5000. Not yet tested in other applications.
Purification :	The antibody was affinity-purified from rabbit antiserum by affinity-chromatography using epitope-specific immunogen.
Concentration :	1 mg/ml

Storage Stability :	-15 °C to -25 °C/1 year(Do not lower than -25 °C)
Observed Band :	53kD
Cell Pathway :	Neuroactive ligand-receptor interaction;
Background :	glucagon like peptide 1 receptor(GLP1R) Homo sapiens This gene encodes a 7-transmembrane protein that functions as a receptor for glucagon-like peptide 1 (GLP-1) hormone, which stimulates glucose-induced insulin secretion. This receptor, which functions at the cell surface, becomes internalized in response to GLP-1 and GLP-1 analogs, and it plays an important role in the signaling cascades leading to insulin secretion. It also displays neuroprotective effects in animal models. Polymorphisms in this gene are associated with diabetes. The protein is an important drug target for the treatment of type 2 diabetes and stroke. Alternative splicing of this gene results in multiple transcript variants. [provided by RefSeq, Apr 2016],
Function :	function:This is a receptor for glucagon-like peptide 1. The activity of this receptor is mediated by G proteins which activate adenylyl cyclase.,online information:Glucagon-like peptide 1 entry,similarity:Belongs to the G-protein coupled receptor 2 family.,
Subcellular Location :	Cell membrane ; Multi-pass membrane protein .
Expression :	Gastric carcinoma,Insulinoma,Pancreas,Pancreatic islet,Placenta,
Tag :	orthogonal
Sort :	1
No4 :	1

Products Images



Western Blot analysis of various cells using GLP-1R Polyclonal Antibody



Immunofluorescence analysis of HeLa cells, using GLP1R Antibody. The picture on the right is blocked with the synthesized peptide.